

SLIDING DOOR INSTALLATION INSTRUCTION

SECURITY BOTTOM ROLLER

Version 1.1 (Up to date: 2013-12-16)

Installation 

subject to technical changes

raumplus

GENERAL INFORMATION, TOOLS AND ACCESSORIES

General Information, tools and accessories _ page 02

Installation instruction_ page 03

GENERAL INFORMATION:

raumplus sliding door systems offer a wide range of variety and versatility. There are systems with and without bottom tracks, a great number of panel variations, doors for sloped ceilings and corner solutions or doors for special application purposes (lockable, application as room divider etc.).

These directions were created by people for people. We have made an effort to develop the instructions and pictures so that they are logical and easy to understand.

If you should nevertheless find something to be unclear, please let us know so that we may revise that section.

Technical details are subject to change.

First of all, get a general idea about what kind of raumplus series you would like to assemble. Please make sure that you have received all items by checking the delivery sheet. Please check also for possible transport damage. In case of any damage please contact your supplier immediately. The single components are numbered on the detailed drawing as well as on the delivery sheet – please check.

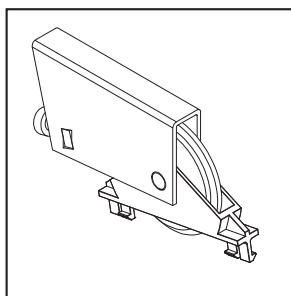
REMARKS: First of all, please read our measurement instructions in order to find the correct measurements.

Attention: For the security bottom roller you cannot use the bottom stopper and the position springs.

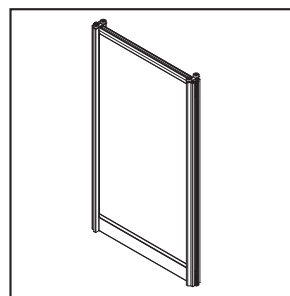
TOOLS:

- Allen keys 4mm
- Flat screwdriver

ACCESSORIES:

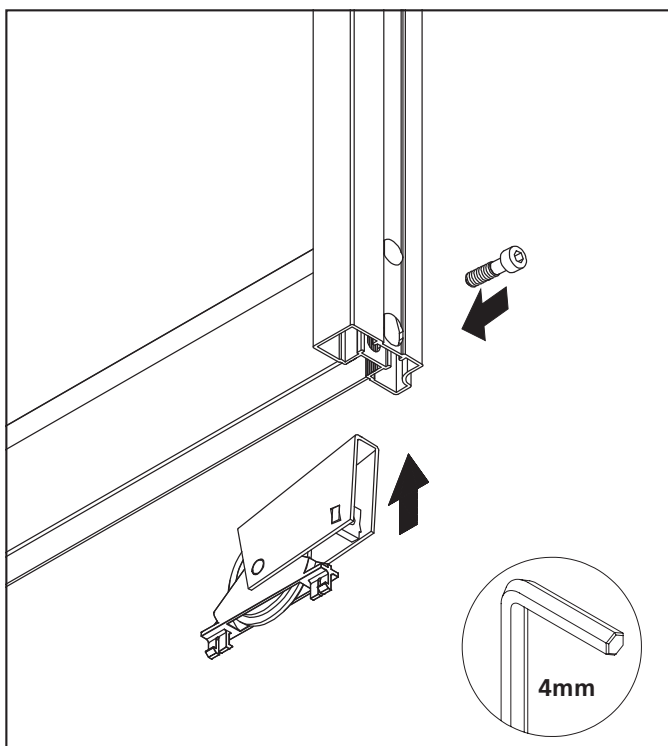


1_ 10.01.021 security bottom roller
25mm screw
10.01.021 security bottom roller
30mm screw

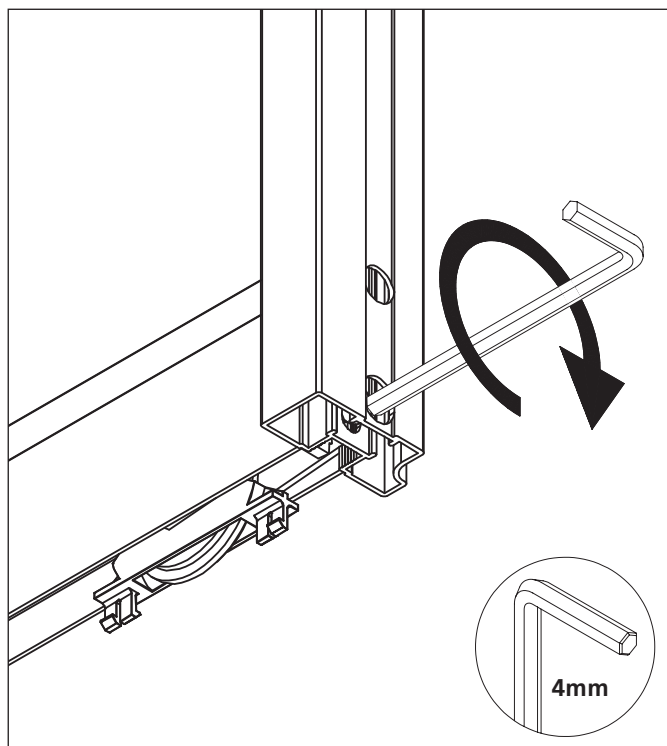


2_ Sliding door

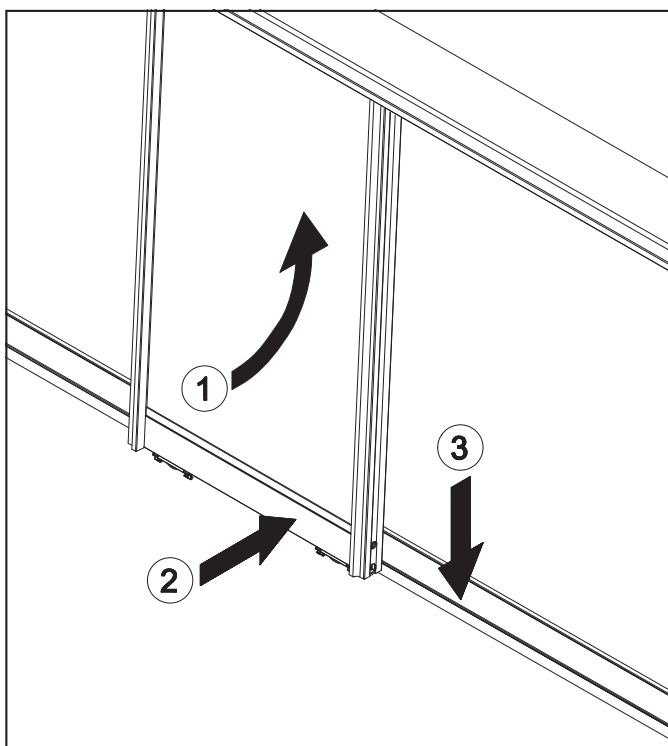
INSTALLATION INSTRUCTION



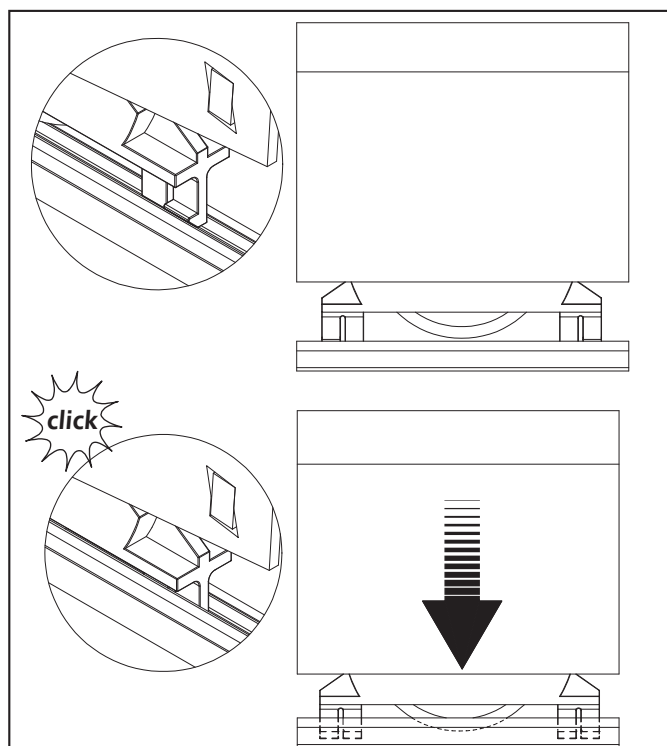
1_ Insert the security bottom roller



2_ Turn slightly adjustment screw

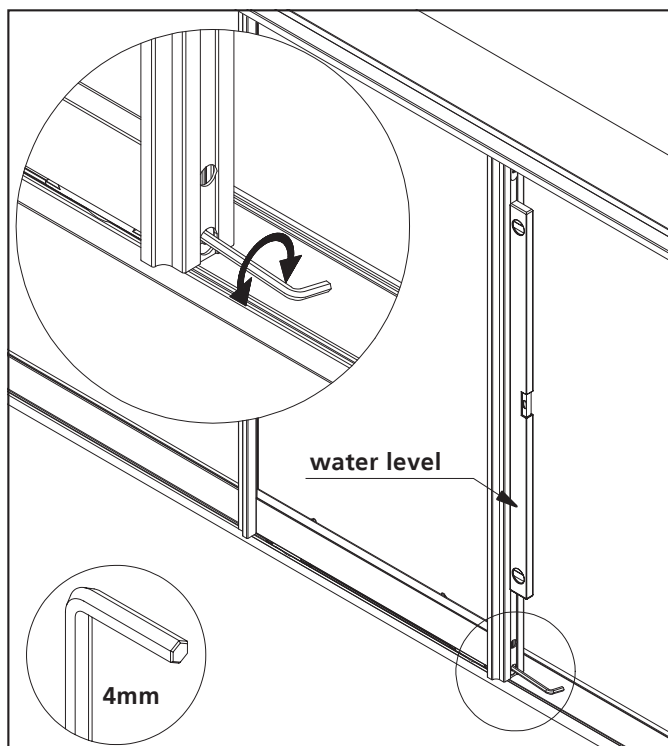


3_ Insert the Sliding door

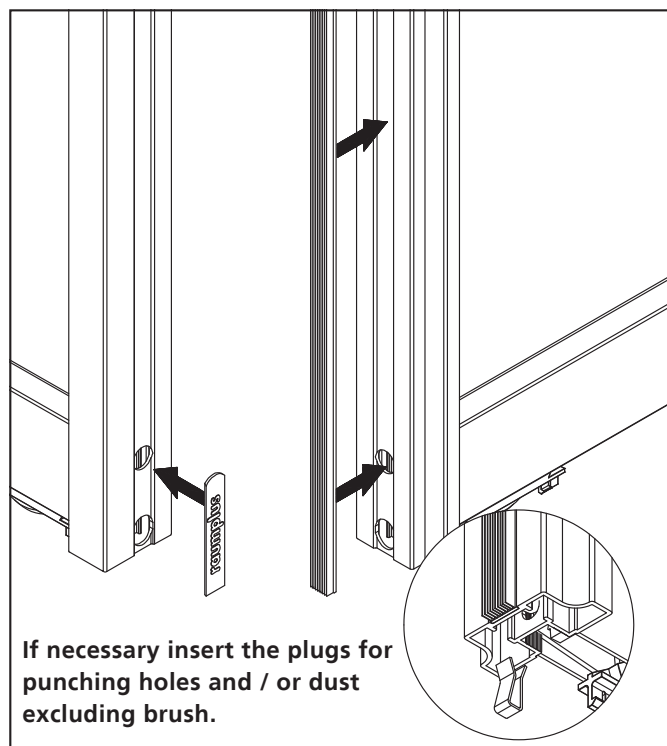


4_ Press the security bottom roller into the bottom rail

INSTALLATION INSTRUCTION

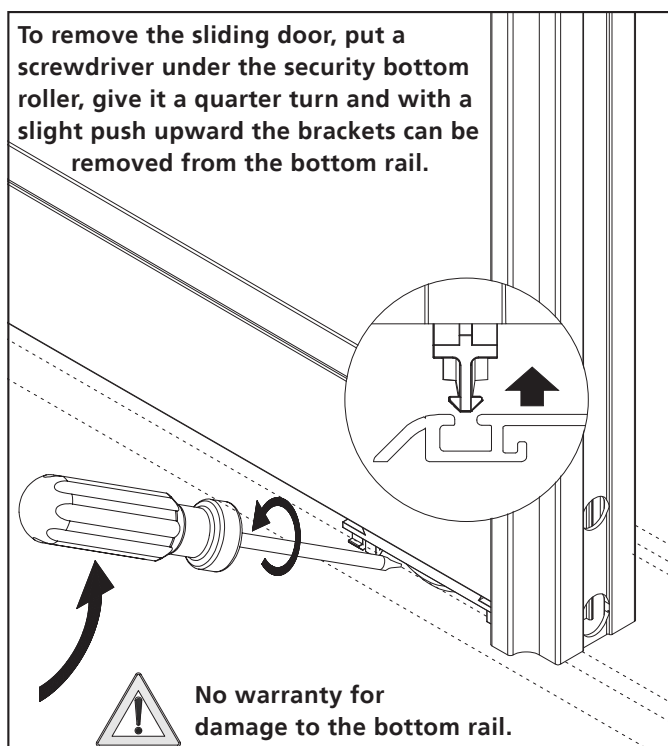


5_ Adjust the sliding door

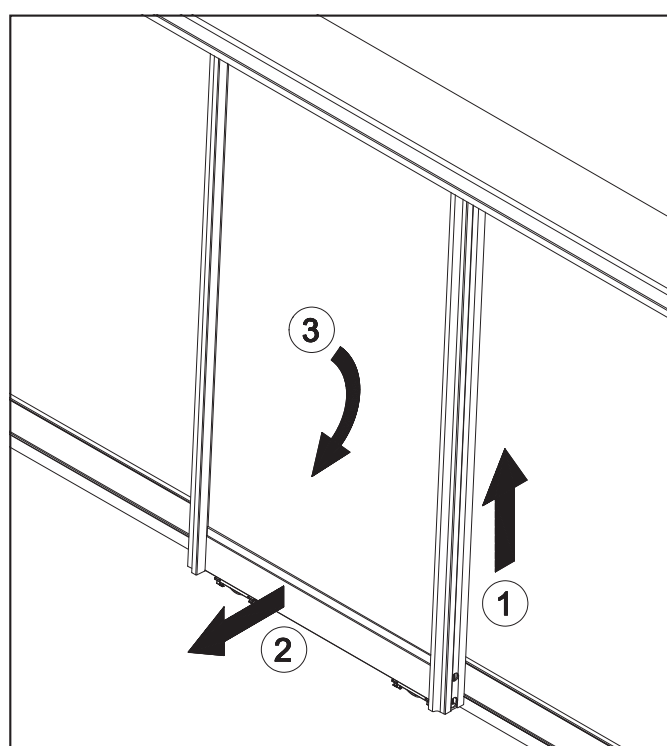


6_

To remove the sliding door, put a screwdriver under the security bottom roller, give it a quarter turn and with a slight push upward the brackets can be removed from the bottom rail.



7_ Remove the security bottom roller



8_ Remove the sliding door