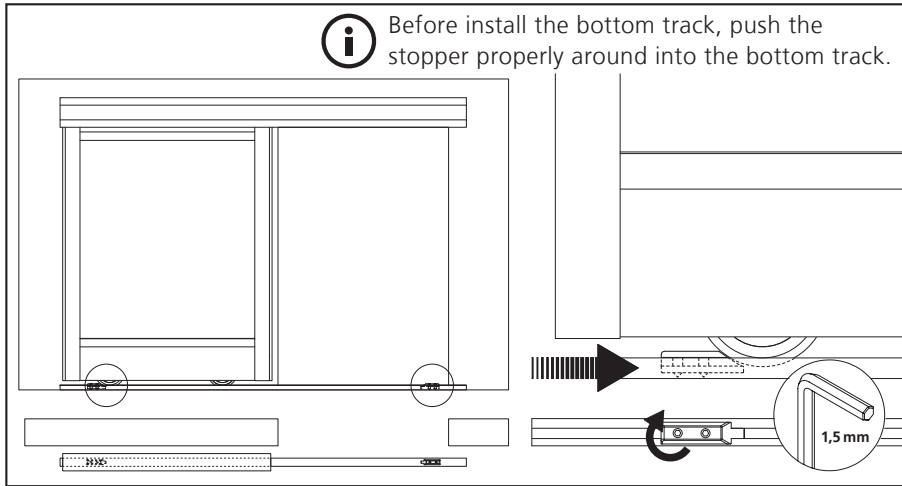


# SLIDING DOOR SYSTEM: INSTALLATION INSTRUCTION

## TOP AND BOTTOM STOPPER

Version 7.2 (Up to date: December 2012)



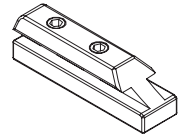
### Stopper for bottom track

Item No.:

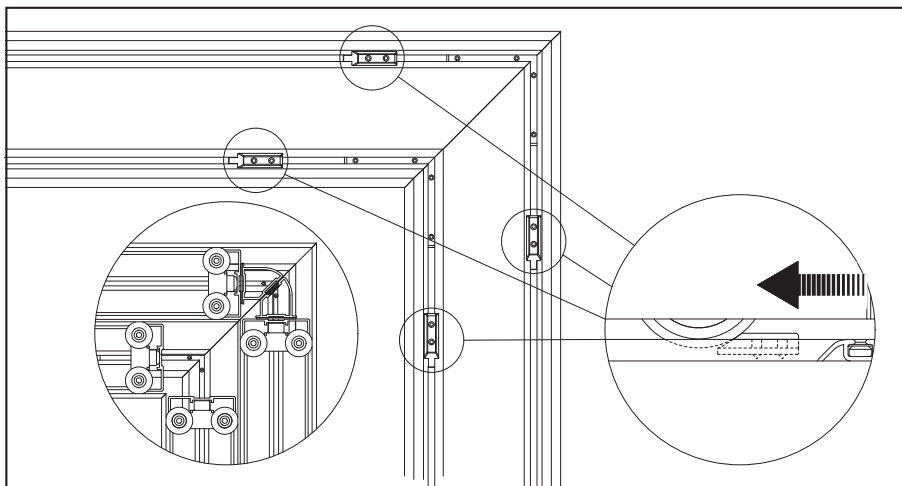
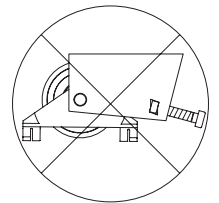
10.01.031 - grey

10.01.038 - white

10.01.034 - black



**PLEASE NOTE:** Bottom door stopper cannot be used with security bottom rollers or position springs!



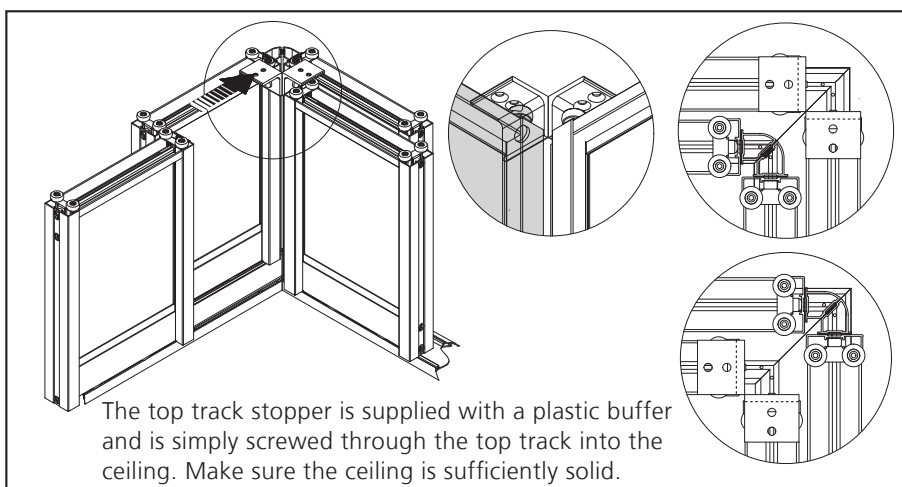
For corner solutions the use of bottom stoppers, at double- / triple corner solutions and additionally the use of top track stoppers are intended or the corner stop for double top track

### Corner stop for double top track S34

Item No.: 10.08.260 w/o Fig.

Corner stop for double top track S42

Item No.: 10.08.298 w/o Fig.



### Stopper for top track S34 - 40 mm

Item No.: 10.08.280

### Stopper for top track S42 - 40 mm

Item No.: 10.08.290

### Stopper for top track S42-60 mm

Item No.: 10.08.297

### Stopper for top track S34 60 mm

Item No.: 10.08.330

### Fixing material

Chipboard screw 4,5 x 35

Item No.: 10.05.046

plugs 6x30

Item No.: 10.07.099

Install  easy medium difficult

Subject to technical changes.

**raumplus**