



## Giunzioni Connecting fittings

# Serie GN100 GN100 Series

GIUNZIONE DELLA SERIE GN100  
PROGETTATA PER  
L'ASSEMBLAGGIO STRUTTURALE  
E PER ESSERE ABBINATA AI  
LIVELLATORI.

DETTAGLIO A: GRANO BOCCOLA  
E PERNO CARATTERIZZATI  
DALL'AVERE FORI PASSANTI.  
IN PARTICOLARE IL PERNO HA  
UN FORO ASOLATO PER  
FACILITARE IL PASSAGGIO  
DELLA CHIAVE ES.4.

DETTAGLIO B: MOSTRA LA  
CHIAVE ES. 4 PASSANTE  
ATTRAVERSO LA GIUNZIONE  
PER LA REGOLAZIONE DEL  
LIVELLATORE.

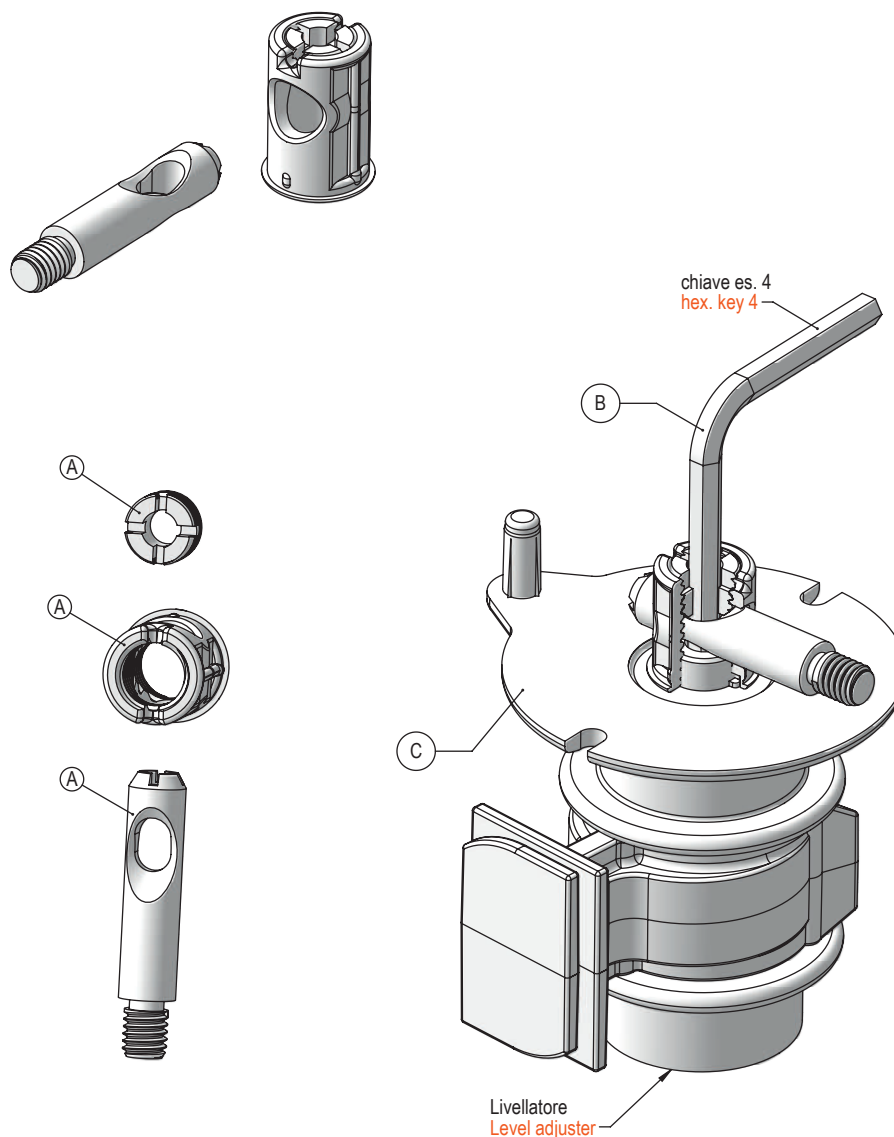
DETTAGLIO C: MOSTRA LA  
SUPERFICIE DI APPOGGIO  
SOTTO LA GIUNZIONE E LA BASE  
PER AUMENTARE LA PORTATA  
SIA DELLA BASE SIA DEL  
FIANCO.

GN100 SERIES CONNECTING  
FITTING DESIGNED FOR  
STRUCTURAL ASSEMBLY AND  
TO BE COMBINED WITH LEVEL  
ADJUSTER.

DETAIL A: GRAIN AND DOWELS  
CHARACTERISED BY THROUGH  
HOLES.  
IN PARTICULAR, THE DOWEL  
HAS A SLOTTED HOLE TO  
FACILITATE THE PASSAGE OF  
AN HEX. KEY 4.

DETAIL B: SHOWS THE HEX. KEY  
4 PASSING THROUGH THE  
CONNECTING FITTING FOR THE  
ADJUSTMENT OF THE LEVEL  
ADJUSTER.

DETAIL C: SHOWS THE SUPPORT  
SURFACE UNDER THE  
CONNECTING FITTING AND THE  
BASE THAT INCREASES THE  
CAPACITY OF BOTH THE BASE  
AND THE SIDE.





## Esempi di applicazioni boccole serie GN100

### Application examples housing GN100 series

QUESTE FIGURE HANNO COME SCOPO PRINCIPALE DI FAR NOTARE CHE IL PIANO INFERIORE E SUPERIORE HANNO LA STESSA FORATURA E CHE SI UTILIZZANO GLI STESSI ACCESSORI (TAPPI) GENERANDO LA STESSA FINITURA.

BOCCOLA ST: CARATTERIZZATA DALL' ESSERE SENZA BORDO. NON PRESENTA SPORGENZE SUI PIANI.

BOCCOLA CT: CARATTERIZZATA DALL'ESSERE CON BORDO, VIENE UTILIZZATA IN PARTICOLARE COL DOPPIO FORO PER RIDURRE LE DIMENSIONI DEI TAPPI IN VISTA. PARTENDO DA SPESSORE MINIMO 25 CON LA CT SI PUO' ASSEMBLARE IL TAPPO FORATO.

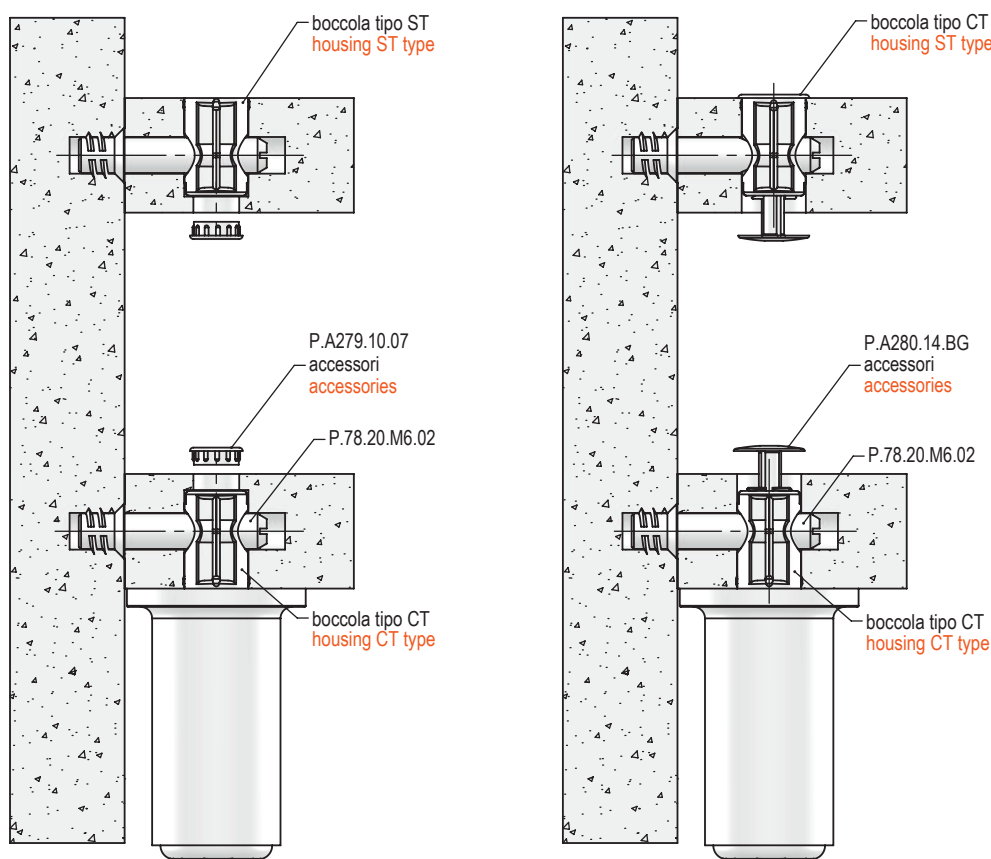
BOCCOLA CTM: CARATTERIZZATA DALL'ESSERE CON BORDO E AVERE LUNGHEZZA PARI ALLO SPESSORE DEL PANNELLO. CON LA CTM SI PUO' ASSEMBLARE SOLO IL TAPPO CON GAMBO.

THESE FIGURES HAVE AS MAIN PURPOSE TO POINT OUT THAT THE LOWER AND UPPER SURFACE HAVE THE SAME HOLE AND USE THE SAME ACCESSORIES (CAPS) GENERATING THE SAME FINISH.

ST HOUSING: CHARACTERISED BY BEING EDGELESS, IT HAS NO PROTRUSIONS ON THE SURFACES.

CT HOUSING: CHARACTERISED BY HAVING AN EDGE, IT IS PARTICULARLY USED WITH A DOUBLE HOLE TO REDUCE THE PARTS WITHIN SIGHT. THE CT BUSHING CAN ALSO BE USED TO ASSEMBLE THE HOLED CAP WITH A 25 mm MINIMUM THICKNESS.

CTM HOUSING: CHARACTERISED BY HAVING AN EDGE AND A LENGTH EQUAL TO THE THICKNESS OF THE PANEL. THE CTM CAN ASSEMBLE ONLY CAPS WITH SHAFT.





## Boccola senza testa tipo ST88

### Housing system without collar ST88 type



1) VARIANTE CON GRANO PREASSEMBLATO LATO "A" WITH PRE-MONTEED GRAIN SIDE "A".  
es./e.g.: A.ST88A.14.18.00  
es./e.g.: A.ST88A.16.22.00



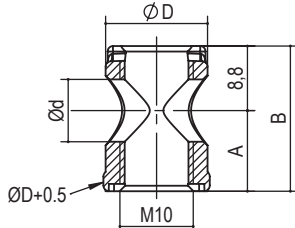
2) VARIANTE CON GRANO PREASSEMBLATO LATO "B" WITH PRE-MONTEED GRAIN SIDE "B".  
es./e.g.: A.ST88G.14.22.00  
es./e.g.: A.ST88G.16.22.00

Ø 14

Ø 16



zama die-cast



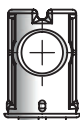
con boccole Ø14 perni Ø8 Housing Ø14 with dowels Ø8  
con boccole Ø16 perni Ø10 Housing Ø16 with dowels Ø10

tipo type	ØD	Ød	misura measure	A	B	finitura finishing	kg / 1000pz	pcs/ pack	pcs/ box
P.ST88.	14	8,5	14.15.	7,5	16,3	00 grezzo raw	5,5	50	1000
			14.18.	9	17,8		6,5	50	1000
			14.20.	10	18,8		7,0	50	1000
			14.22.	11	19,8	05 ottonato brass	7,5	50	1000
			14.25.	12,5	21,3	06 bronzato bronzed	8,0	50	1000
			16.22.	11	19,8	07 nichelato nickel	11,0	50	1000
	16	10,5	16.25.	12,5	21,3		12,0	50	1000
			16.30.	15	23,8		14,5	50	1000

es./e.g.: P.ST88.14.18.07

## Boccola con testa tipo CT88

### Housing system with collar CT88 type



1) VARIANTE CON GRANO PREASSEMBLATO LATO "A" WITH PRE-MONTEED GRAIN SIDE "A".  
es./e.g.: A.CT88A.14.18.06  
es./e.g.: A.CT88A.16.22.06



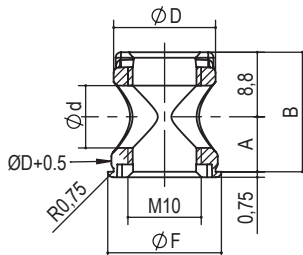
2) VARIANTE CON GRANO PREASSEMBLATO LATO "B" WITH PRE-MONTEED GRAIN SIDE "B".  
es./e.g.: A.CT88G.14.18.06  
es./e.g.: A.CT88G.16.22.06

Ø 14

Ø 16



zama die-cast



con boccole Ø14 perni Ø8 Housing Ø14 with dowels Ø8  
con boccole Ø16 perni Ø10 Housing Ø16 with dowels Ø10

tipo type	ØD	Ød	ØF	misura measure	A	B	finitura finishing	kg / 1000pz	pcs/ pack	pcs/ box
P.CT88.	14	8,5	15,5	14.15.	7,5	16,3	00 grezzo raw	6,0	50	1000
				14.18.	9	17,8		7,0	50	1000
				14.20.	10	18,8		7,5	50	1000
				14.22.	11	19,8	05 ottonato brass	8,0	50	1000
				14.25.	12,5	21,3	06 bronzato bronzed	8,5	50	1000
				14.28.	14	22,8	07 nichelato nickel	9,0	50	1000
	16	10,5	17,5	16.22.	11	19,8		11,5	50	1000
				16.25.	12,5	21,3		12,5	50	1000
				16.30.	15	23,8		15,0	50	1000

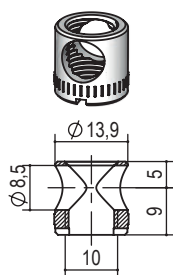
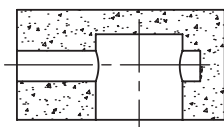
es./e.g.: P.CT88.16.25.00

## Boccole per fori ciechi tipo ST50 - CT50 - ST55 - CT55

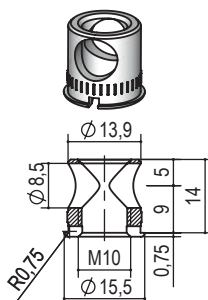
### Housing system for blind hole ST50 - CT50 - ST55 - CT55 type

finiture a richiesta in funzione delle quantità  
finishing on request based on quantity:

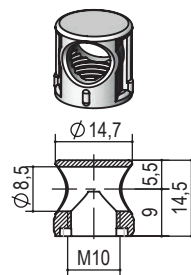
00 grezzo raw  
05 ottonato brass  
06 bronzato bronzed  
07 nichelato nickel



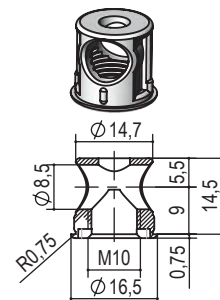
ST50.14  
P.ST50.14.18.00



CT50.14  
P.CT50.14.18.00



ST55.15  
P.ST55.15.18.00



CT55.15  
P.CT55.15.18.00

www.omm.name  
omm@omm.name  
tel. 0362.622377





## Giunzioni Connecting fittings

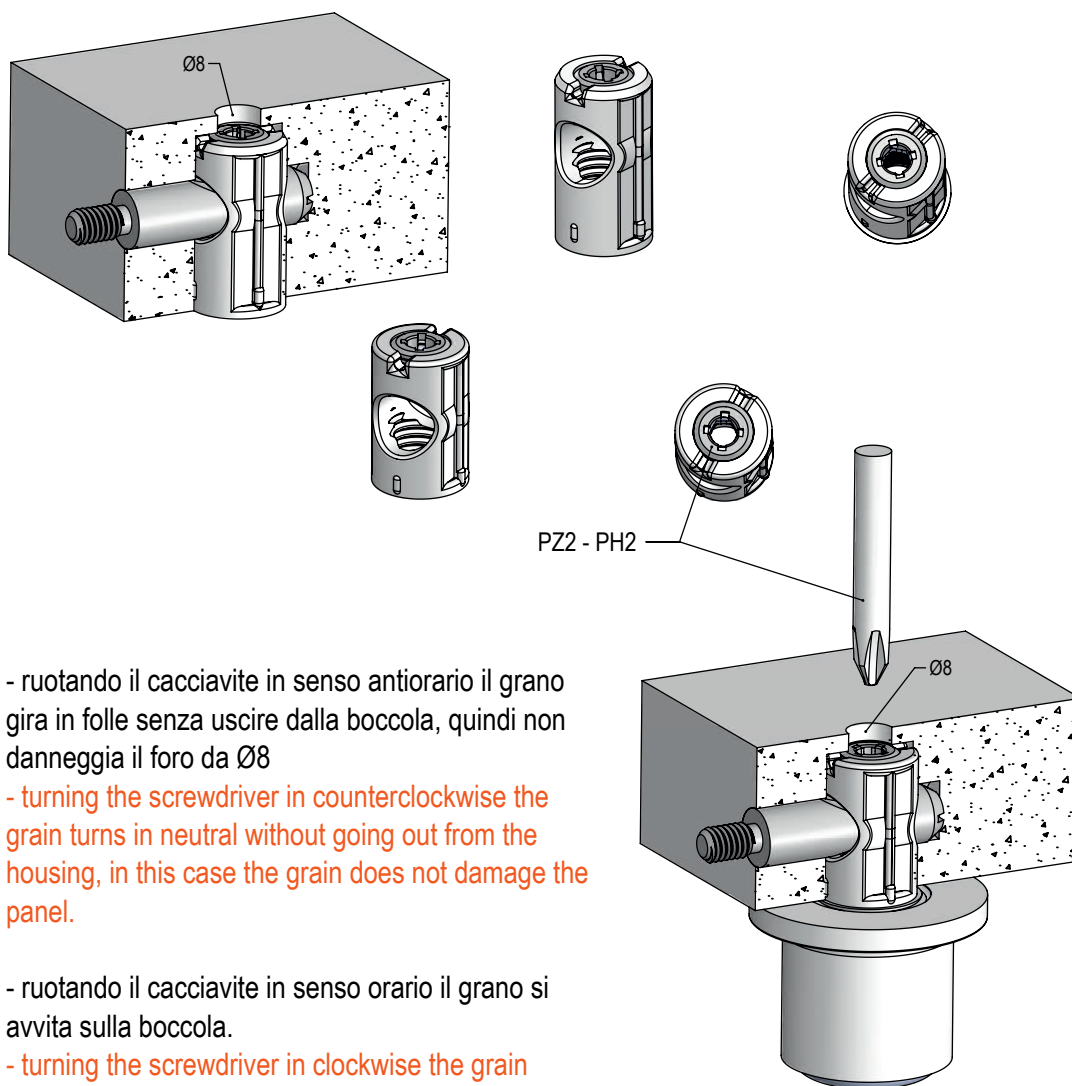
GIUNZIONE DELLA SERIE GN100GF PROGETTATA PER L'ASSEMBLAGGIO STRUTTURALE E PER ESSERE ABBINATA AI LIVELLATORI.

GN100GF PERMETTE DI AVERE IN VISTA SUL PANNELLO UN FORO DA Ø8.

GN100GF SERIES CONNECTING FITTING DESIGNED FOR STRUCTURAL ASSEMBLY AND TO BE COMBINED WITH LEVEL ADJUSTER.

WITH GN100GF IN NEUTRAL THE HOLE ON VIEW IS Ø8.

# Serie GN100F con grano folle GN100F Series with grain in neutral



- ruotando il cacciavite in senso antiorario il grano gira in folle senza uscire dalla boccia, quindi non danneggia il foro da Ø8

- turning the screwdriver in counterclockwise the grain turns in neutral without going out from the housing, in this case the grain does not damage the panel.

- ruotando il cacciavite in senso orario il grano si avvita sulla boccia.

- turning the screwdriver in clockwise the grain screws in the housing

- inserendo la chiave es.4 attraverso il grano in profondità possiamo regolare l'altezza del livellatore.

- inserting hex.4 key deep through the grain to adjust the level adjuster



## Boccola stipo ST118F e CT118F con grano folle

### Housing system ST118F and CT118F type with grain in neutral

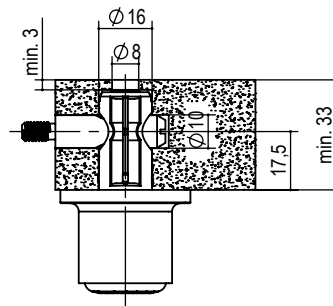
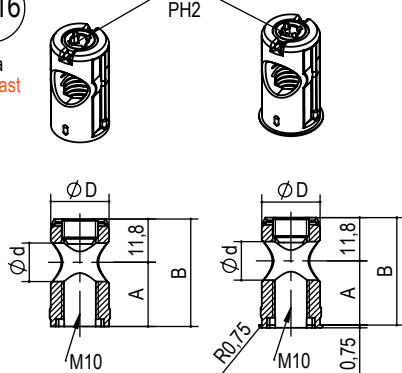
con boccole Ø16 perni Ø10  
Housing Ø16 with dowels Ø10

possibilità di abbinare le boccole con i livellatori della serie: LV300 - LV500  
possible to combine the housings with the level adjuster series: LV300 - LV500

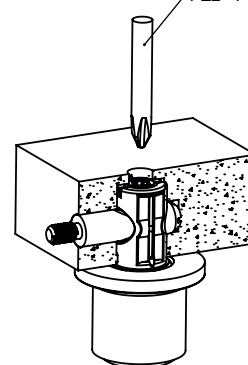
Ø 16

zama  
die-cast

PZ2  
PH2



PZ2 - PH2



ACCESSORI  
ACCESSORIES

tappo in zama per foro Ø8  
zama cover cup for Ø8 hole  
cod.  
P.A458.08.00

tipo type	ØD	Ød	ØF	misura measure	A	B	finitura finishing	kg / 1000pz	pcs/ pack	pcs/ box
A.CT118F	16	10,5	x	16.35.	17,5	29,3	00 grezzo raw 05 ottinato brass 06 bronzato bronzed 07 nichelato nickel	12,5	50	1000
A.ST118F			17,5	16.35.						

es./e.g.: A.ST118F.16.35.00

## Boccola tipo STMF e CTMF con grano folle

### Housing system STMF and CTMF type with grain in neutral

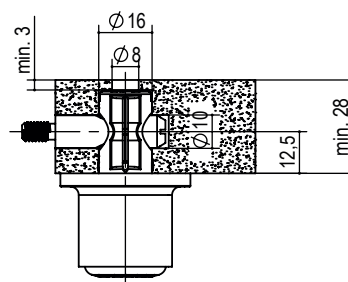
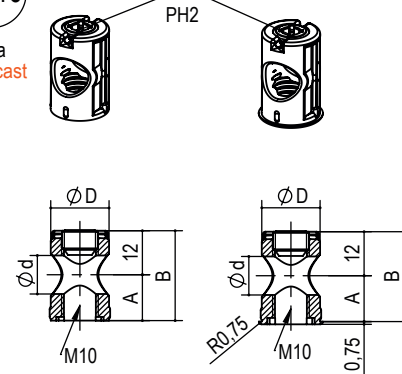
con boccole Ø16 perni Ø10  
Housing Ø16 with dowels Ø10

possibilità di abbinare le boccole con i livellatori della serie: LV300 - LV500  
possible to combine the housings with the level adjuster series: LV300 - LV500

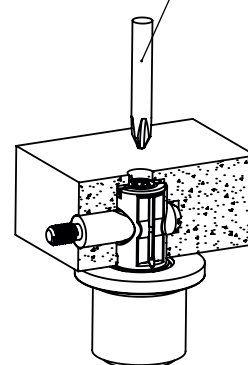
Ø 16

zama  
die-cast

PZ2  
PH2



PZ2 - PH2



tipo type	ØD	Ød	ØF	misura measure	A	B	finitura finishing	kg / 1000pz	pcs/ pack	pcs/ box
A.CTMF	16	10,5	x	16.25.	12,5	24,3	00 grezzo raw 05 ottinato brass 06 bronzato bronzed 07 nichelato nickel	12,5	50	1000
A.STMF			17,5							

es./e.g.: A.CTMF.16.25.00



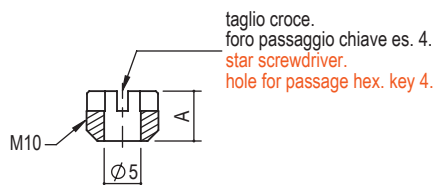
## Grano M10 e Tappi Grain M10 and Covers

CARATTERIZZATO DAL FORO PASSANTE CHE PERMETTE IL PASSAGGIO DI UNA CHIAVE ES.4.  
IL TAGLIO A CROCE PERMETTE L'AVVITATURA CON CACCIIVITE A CROCE INCLINATO FINO A 30°.

CHARACTERISED BY A THROUGH HOLE THAT ALLOWS THE PASSAGE OF AN HEX. KEY 4.  
THE CROSS CUT ALLOWS SCREWING WITH A PHILLIPS SCREWDRIVER TILTED UP TO 30°.

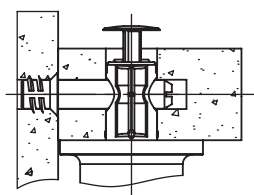


acciaio  
steel

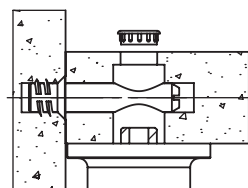


tipo type	misura measure	A	finitura finishing	kg / 1000pz	pcs/ pack	pcs/ box
P.A268.	007.	6,8	02 zincato bianco white zinc	2	100	5000
	010.	9,5	05 ottinato brass		100	5000

es./e.g.: P.A268.007.02



polipropilene  
polypropilene



zama  
die-cast

per i tappi vedere accessori  
for covers, see accessories

IL FORO PASSANTE ASOLATO PERMETTE IL PASSAGGIO DI UNA CHIAVE ES. 4 CONSIDERANDO LE TOLLERANZE DI LAVORAZIONE E ASSEMBLAGGIO.

THE SLOTTED THROUGH HOLE ALLOWS THE PASSAGE OF AN HEX. KEY 4 CONSIDERING THE MACHINING AND ASSEMBLING TOLERANCES.

a richiesta  
on request

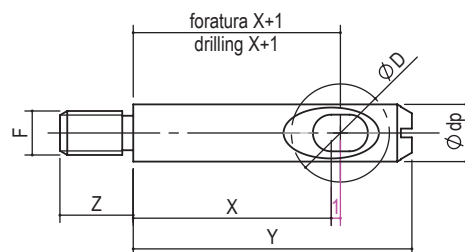


es./e.g.: P.78.20.M6x12,5.PR.02



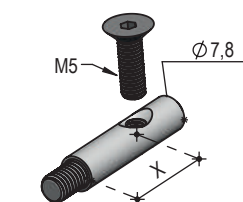
acciaio  
steel

taglio a croce  
star screwdriver



tipo type	misura measure	ØD	Ødp	X	Y	Z	F	finitura finishing	kg/ 1000pz	pcs/ pack	pcs/ box
P.78	20.M6.	14	7,8	20	31	10		02 zincato bianco white zinc	10,2	50	2000
	27.M6.			27	38	10			12,5	50	2000
	30.M6.			30	41	10			14,0	50	1000
P.98.	20.M6.	16	9,8	20	33	10		02 zincato bianco white zinc	16,1	25	1000
	27.M6.			27	40	10			20,2	25	1000
	30.M6.			30	43	10			22,0	25	1000

es./e.g.: P.78.20.M6.02



a richiesta interasse X  
interaxis distance X on request

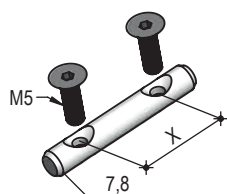


## Perni passanti Duble dowels

IL FORO PASSANTE ASOLATO PERMETTE IL PASSAGGIO DI UNA CHIAVE ES. 4 CONSIDERANDO LE TOLLERANZE DI LAVORAZIONE E ASSEMBLAGGIO.

THE SLOTTED THROUGH HOLE ALLOWS THE PASSAGE OF AN HEX. KEY 4 CONSIDERING THE MACHINING AND ASSEMBLING TOLERANCES.

a richiesta  
on request

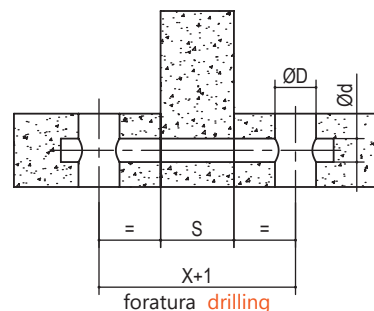
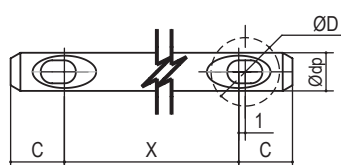
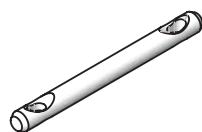


a richiesta interasse X  
interaxis distance X on request

con perni Ø8 boccole Ø14 dowels Ø8 with housing Ø14  
con perni Ø10 boccole Ø16 dowels Ø10 with housing Ø16



acciaio  
steel



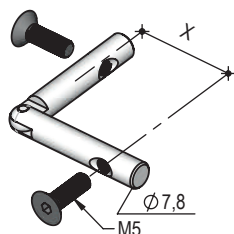
tipo <u>type</u>	misura <u>measure</u>	ØD	Ødp	Ød	X	S	C	finitura <u>finishing</u>	kg/ 1000pz	pcs/ pack	pcs/ box
P.P78.	041.	14	7,8	8	41	0	11	02 zincato bianco <u>white zinc</u>	18	25	1000
	059.				59	18			26	25	500
	066.				66	25			29	25	500
P.P98.	041.	16	9,8	10	41	0	13		30	25	500
	066.				66	25			44	25	500
	071.				71	30			50	25	500
	081.				81	40			58	25	500
...	...	...	...	...	...	...	...	...	...	...	

es/e.g.: P.P78.066.02

su richiesta altre misure di interasse "X"  
other wheel base "X" on request

## Perni angolari Corner dowels

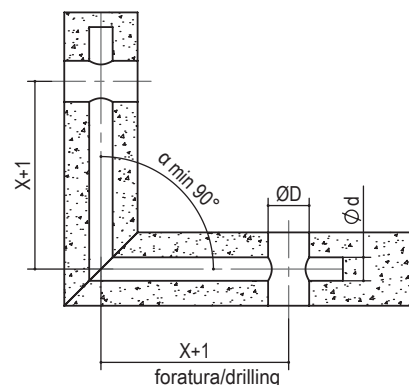
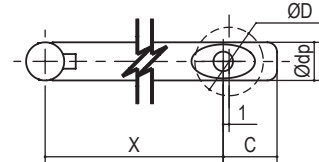
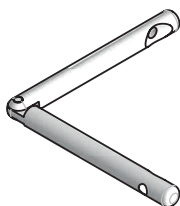
a richiesta  
on request



a richiesta interasse X  
interaxis distance X on request



acciaio  
steel



tipo type	misura measure	ØD	Ødp	Ød	X	C	finitura finishing	kg / 1000pz	pcs/ pack	pcs/ box
NG.78.	64.	14	7,8	8	64	11	02 zincato bianco white zinc	56,4	25	500
NG.98.	65.	16	9,8	10	65	13		84	25	250
...	...	...	...	...	...	...	...	...	...	...

es/e.g.: NG.78.64.02

su richiesta altre misure di interasse "X"  
other wheel base "X" on request

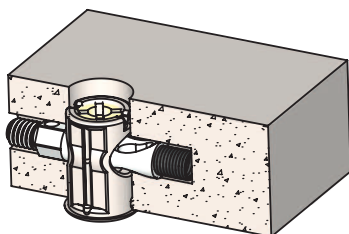


## Perni con molla per assemblaggio in nicchia Dowels with spring for recess assembly

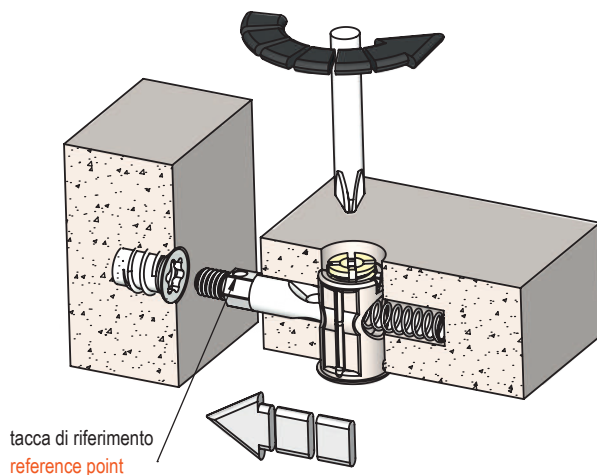
CARATTERIZZATO DALLA MOLLA CHE PERMETTE DI AVERE I PERNI PREINSERITI NEL PANNELLO. CON FORO PASSANTE CHE PERMETTE LA REGOLAZIONE DEL LIVELLATORE CON CHIAVE ES.4.

CHARACTERISED BY A SPRING THAT ALLOWS TO HAVE DOWELS ALREADY ENTERED IN THE PANEL. HOLE THAT ALLOWS THE PASSAGE OF AN HEX. KEY 4 FOR ADJUST THE LEVEL ADJUSTER.

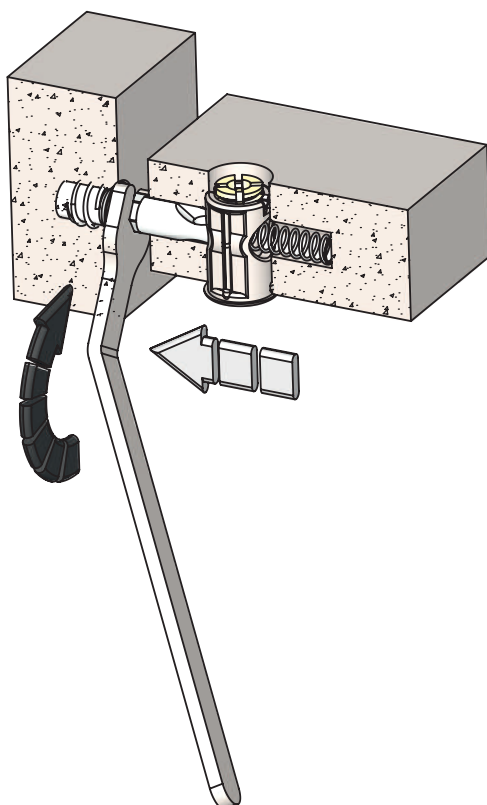
- 1 - perno bloccato a filo all'interno del pannello.  
dowel lock inside in the panel.



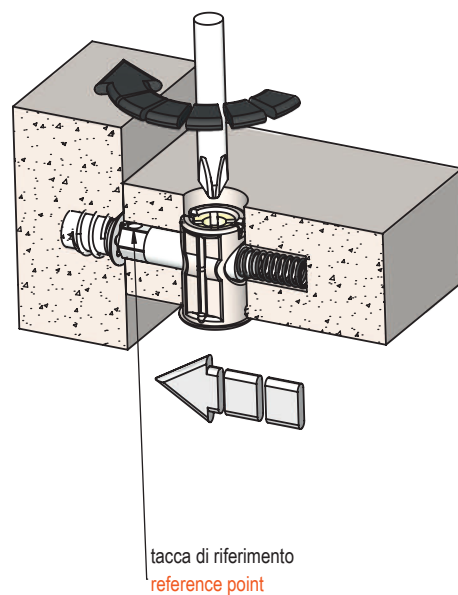
- 2 - svitando il grano il perno esce e può essere avvitato nella bussola.  
unscrew the grain, the dowel come out and it can be screwed with the bushing.



- 3 - avvitare il perno con la chiave in dotazione, portando la tacca di riferimento verso l'alto.  
screw the dowel with the supplied key, with the reference mark upward.



- 4 - stringere il grano per unire i pannelli.  
tie the grain to connect the panels.



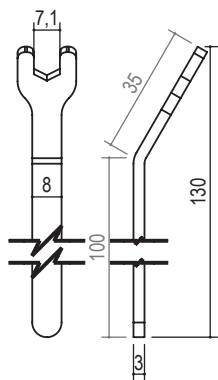
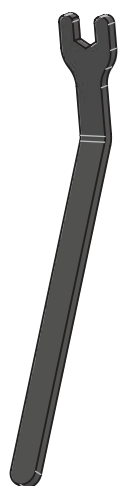


## Perni con molla Dowels with spring

CARATTERIZZATO DALLA MOLLA CHE PERMETTE DI AVERE I PERNI PRE-INSERITI NEL PANNELLO.  
CON FORO PASSANTE CHE PERMETTE LA REGOLAZIONE DEL LIVELLATORE CON CHIAVE ES.4.

CHARACTERISED BY A SPRING THAT ALLOWS TO HAVE DOWELS ALREADY ENTERED IN THE PANEL  
HOLE THAT ALLOWS THE PASSAGE OF AN HEX. KEY 4 FOR ADJUST THE LEVEL ADJUSTER.

ACCESSORI  
ACCESSORIES

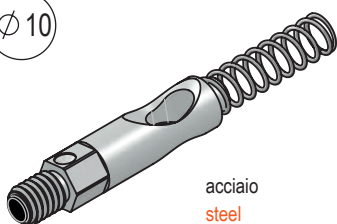


chiave es. 7

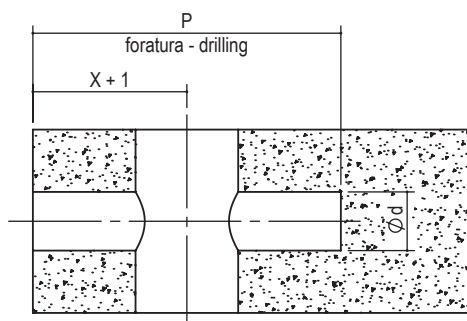
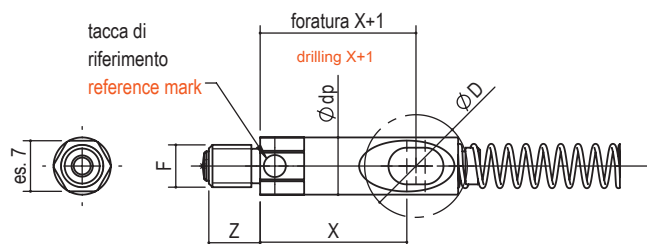
wrench key 7

cod: P.CH7.PM.135.02

perni Ø8 boccole Ø14 dowels Ø8 with housing Ø14  
perni Ø10 boccole Ø16 dowels Ø10 with housing Ø16



acciaio  
steel

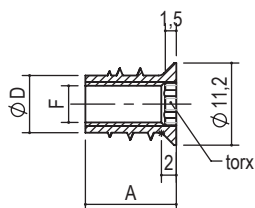
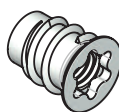


tipo type	misura measure	Ødp	X	Z	F	d	P	finitura finishing	kg/ 1000pz	pcs/ pack
A.PM.	78.20.M6.	7,8	20	7	M6	8	40	02 zincato bianco white zinc	9,8	50
	98.20.M6.	9,8	20	7		10	42		14,1	25
	98.20.M8.		20	7	M8				14,2	25

es/e.g.: A.PM.78.20.M6.02



## Bussole torx Torx bush



tipo type	misura measure	ØD	A	F	Torx	finitura finishing
P.TS.08	M5x12,5	8	12,3	M5	T40	00 grezzo raw
	M6x12,5	8		M6	T45	02 zincato zinc
...	...	...	...	...	...	...

es/e.g.: P.TS.08.M6x12,5.02



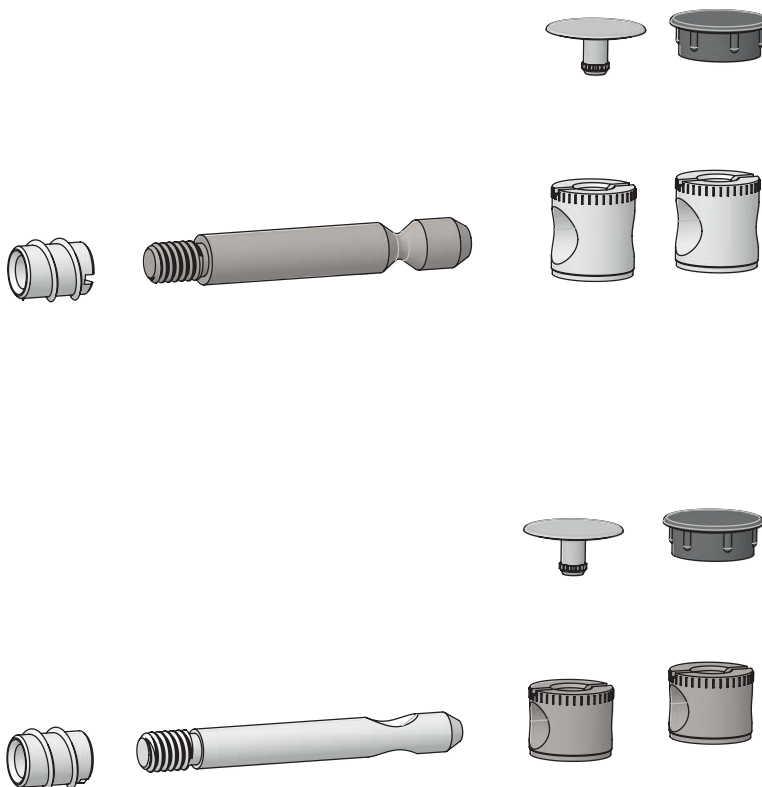


## Giunzioni Connecting fittings

GIUNZIONE DELLA SERIE GN110  
PERMETTE DI APPLICARE  
GIUNZIONI STRUTTURALI ANCHE  
A PANNELLI DI SPESSORE  
RIDOTTO.

THE GN110 SERIES CONNECTING  
FITTING ALLOWS THE  
APPLICATION OF STRUCTURAL  
CONNECTING FITTINGS EVEN ON  
PANELS WITH REDUCED  
THICKNESS.

# Serie GN110 GN110 Series



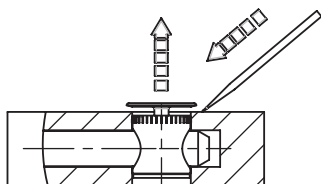


## Esempi di applicazioni boccole serie GN110

### Application examples housing GN110 series

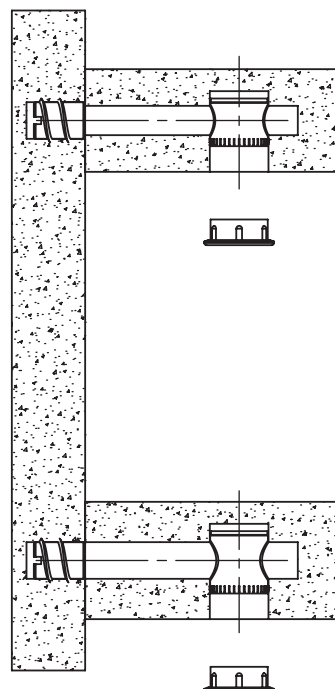
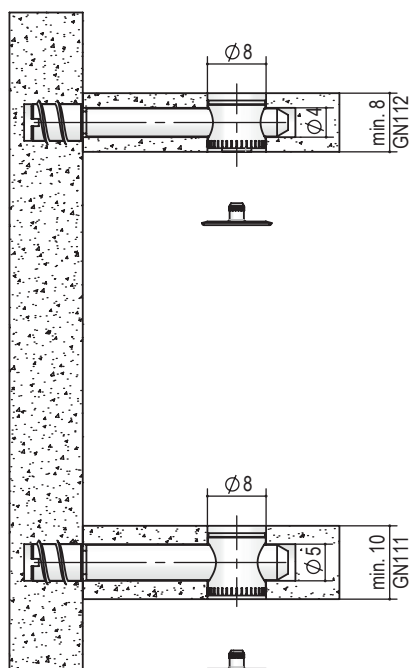
BOCCOLA ST: CARATTERIZZATA DALL'ESSERE SENZA BORDO E PER FORO NON PASSANTE. SPESSORE MINIMO DEL PANNELLO = 12.5

ST HOUSING: CHARACTERISED BY BEING EDGELESS AND WITHOUT A THROUGH TYPE HOLE. MINIMUM PANEL THICKNESS = 12.5



SMONTAGGIO TAPPO  
COVER CUP REMOVAL

Con boccole ST112 Ø8x6,5 mm spessore minimo A ≥ 8  
With housing ST112 Ø8x6,5 mm min. thickness A ≥ 8  
Con boccole ST111 Ø8x8,5 mm spessore minimo B ≥ 10  
With housing ST111 Ø8x8,5mm min. thickness B ≥ 10





## Giunzioni Connecting fittings

# Serie GN111 GN111 Series

GIUNZIONE DELLA SERIE GN110 PERMETTE DI APPLICARE GIUNZIONI STRUTTURALI ANCHE A PANNELLI DI SPESSORE DA 8 mm.

LE DIMENSIONI RIDOTTE NE MIGLIORANO L'IMPATTO ESTETICO. LA REALIZZAZIONE IN ACCIAIO GARANTISCE ALTA RESISTENZA. SONO DISPONIBILI TAPPI DI COPERTURA.

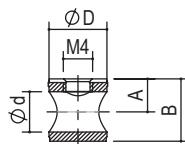
THE GN110 SERIES CONNECTING FITTING ALLOWS THE APPLICATION OF STRUCTURAL CONNECTING FITTINGS EVEN ON PANELS WITH REDUCED FROM 8 mm.

THE REDUCED SIZES IMPROVE THE AESTHETIC IMPACT. THE STEEL MAKING ENSURES RESISTANCE. COVER CAPS ARE AVAILABLE.

boccola Ø8 - housing Ø8



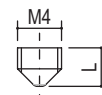
acciaio  
steel



grano - grain



esagono 2  
hexagon 2  
acciaio  
steel



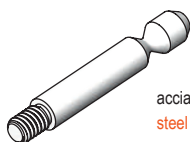
tipo type	ØD	misura measure	Ød	A	B	finitura finishing	kg / 1000pz	pcs/ pack	pcs/ box
P.ST111.	08.	8,5	5,5	4,5	8,5	02 zincato bianco white	1,4	500	5000
...	...	...	...	...	...	...	...	...	...

es/e.g.: P.ST111.08.8,5.02

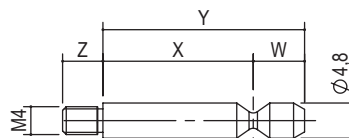
tipo type	misura measure	L	finitura finishing	kg / 1000pz	pcs/ pack	pcs/ box
P.G150.	05.3.5.	3,5	01 brunito brunished	0,2	100	1000
...	...	...	...	...	...	...

es/e.g.: P.G150.5.3,5.01

perni Ø5 - dowels Ø5



acciaio  
steel



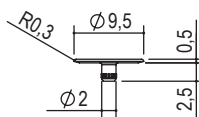
tipo type	misura measure	X	Y	Z	W	finitura finishing	kg / 1000pz	pcs/ pack	pcs/ box
P.111	05.20,5	20,5	27,5	5,5	7	02 zincato bianco white	3,9	500	5000
...	...	...	...	...	...	...	...	...	...

es/e.g.: P.111.05.20,5.02

tappi - cups



ottone  
brass

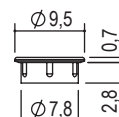


tipo type	Ø bussola Ø housing	finitura finishing	kg / 1000pz	pcs/ pack	pcs/ box
P.T110.	08	05 ottinato brass 06 bronzato bronze 07 nichelato nickel 53 nero black	0,36	100	5000

es/e.g.: P.T110.08.07

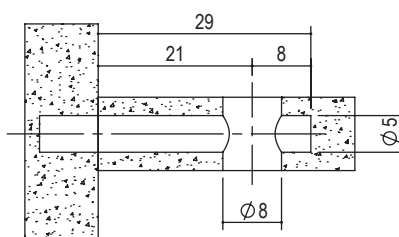


zama  
die-cast



tipo type	Ø bussola Ø housing	finitura finishing	kg / 1000pz	pcs/ pack	pcs/ box
P.A458.	08	05 ottinato brass 06 bronzato bronze 07 nichelato nickel 53 nero black	1,2	100	5000

es/e.g.: P.A458.08.07





## Giunzioni Connecting fittings

# Serie GN112 GN112 Series

GIUNZIONE DELLA SERIE GN110 PERMETTE DI APPLICARE GIUNZIONI STRUTTURALI ANCHE A PANNELLI DI SPESSORE 8 mm.

LE DIMENSIONI RIDOTTE NE MIGLIORANO L'IMPATTO ESTETICO. LA REALIZZAZIONE IN ACCIAIO GARANTISCE ALTA RESISTENZA. SONO DISPONIBILI TAPPI DI COPERTURA.

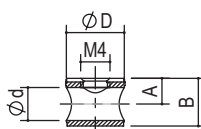
THE GN110 SERIES CONNECTING FITTING ALLOWS THE APPLICATION OF STRUCTURAL CONNECTING FITTINGS EVEN ON PANELS WITH REDUCED FROM 8 mm.

THE REDUCED SIZES IMPROVE THE AESTHETIC IMPACT. THE STEEL MAKING ENSURES RESISTANCE. COVER CAPS ARE AVAILABLE.

bussola Ø8 - housing Ø8



acciaio  
steel



tipo type	ØD	Ød	misura measure	A	B	finitura finishing	kg / 1000pz	pcs/ pack	pcs/ box
P.ST112	08	4,5	07	3,5	6,5	02 zincato bianco white	1,4	500	5000
...	...	...	...	...	...	...	...	...	...

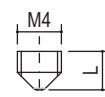
es/e.g.: P.ST112.08.07.02

grano - grain



esagono 2  
hexagon 2

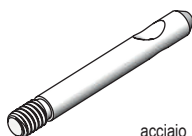
acciaio  
steel



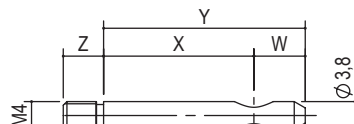
tipo type	misura measure	L	finitura finishing	kg / 1000pz	pcs/ pack	pcs/ box
P.G150	05.3.5	3,5	01 brunito brushed	0,2	100	1000
...	...	...	...	...	...	...

es/e.g.: P.G150.05.3.5.01

perni Ø4 - dowels Ø4



acciaio  
steel



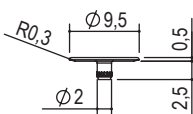
tipo type	misura measure	X	Y	Z	W	finitura finishing	kg / 1000pz	pcs/ pack	pcs/ box
P.112	04.20,5	20,5	27,5	5,5	7	02 zincato bianco white	3,9	500	5000
...	...	...	...	...	...	...	...	...	...

es/e.g.: P.112.04.20,5.02

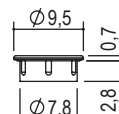
tappi - cups



ottone  
brass



zama  
die-cast

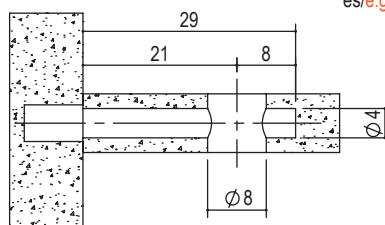


tipo type	Ø bussola Ø housing	finitura finishing	kg / 1000pz	pcs/ pack	pcs/ box
P.T110	08	05 ottinato brass 06 bronzato bronze 07 nichelato nickel 53 nero black	0,36	100	5000

es/e.g.: P.T110.08.07

tipo type	Ø bussola Ø housing	finitura finishing	kg / 1000pz	pcs/ pack	pcs/ box
P.A458	08	05 ottinato brass 06 bronzato bronze 07 nichelato nickel 53 nero black	1,2	100	5000

es/e.g.: P.A458.08.07





## Giunzioni Connecting fittings

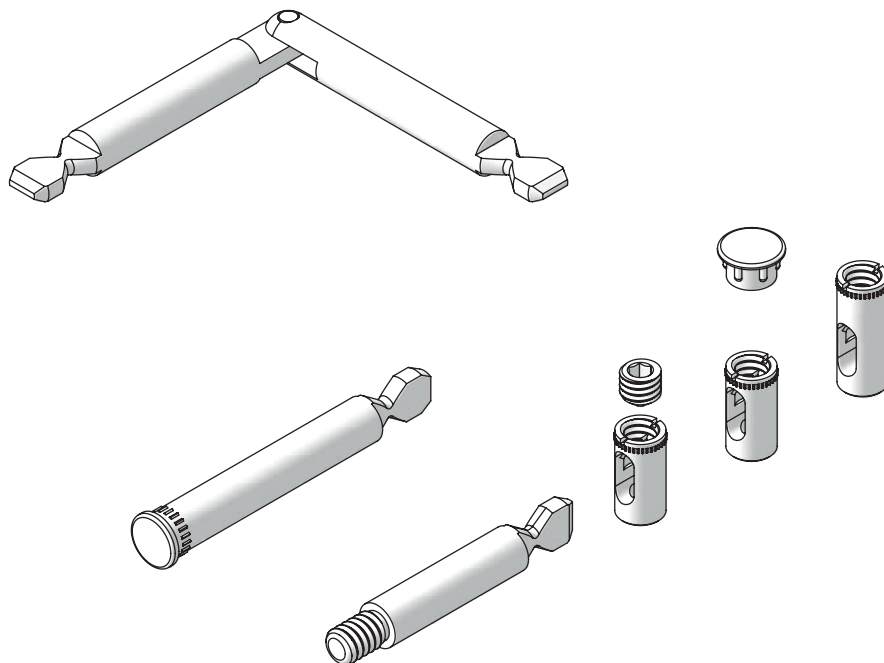
GIUNZIONE DELLA SERIE GN150  
PERMETTE DI APPLICARE  
GIUNZIONI STRUTTURALI ANCHE  
A PANNELLI DI SPESSORE  
RIDOTTO.

LE DIMENSIONI RIDOTTE NE  
MIGLIORANO L'IMPATTO  
ESTETICO.  
LA REALIZZAZIONE IN ACCIAIO  
GARANTISCE LA RESISTENZA.  
SONO DISPONIBILI TAPPI DI  
COPERTURA.

THE GN150 SERIES CONNECTING  
FITTING ALLOWS THE  
APPLICATION OF STRUCTURAL  
CONNECTING FITTINGS EVEN ON  
PANELS WITH REDUCED  
THICKNESS.

THE REDUCED SIZES IMPROVE  
THE AESTHETIC IMPACT. THE  
STEEL MAKING ENSURES  
RESISTANCE. COVER CAPS ARE  
AVAILABLE.

# Serie GN150 GN150 Series





## Esempi di applicazioni boccole serie GN150

### Application examples housing GN150 series

BOCCOLA ST: CARATTERIZZATA DALL'ESSERE SENZA BORDO E PER FORO NON PASSANTE. SPESSORE MINIMO DEL PANNELLO = 12,5

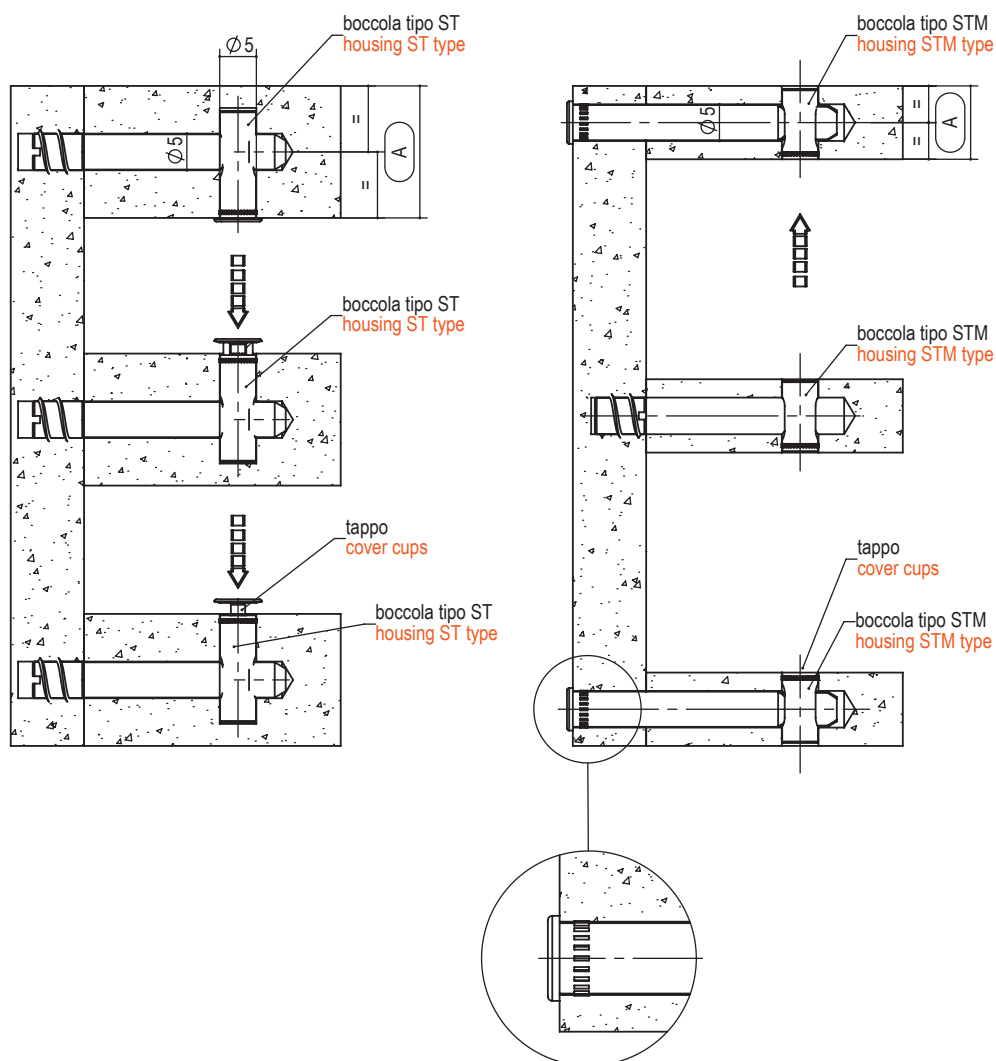
BOCCOLA STM: CARATTERIZZATA DALL'ESSERE SENZA BORDO E DI LUNGHEZZA PARI ALLO SPESSORE DEL PANNELLO. SPESSORE MINIMO DEL PANNELLO = 10.

ST HOUSING: CHARACTERISED BY BEING EDGELESS AND WITHOUT A THROUGH TYPE HOLE. MINIMUM PANEL THICKNESS = 12,5

STM HOUSING: CHARACTERISED BY BEING EDGELESS AND WITH A LENGTH EQUAL TO THE THICKNESS OF THE PANEL. MINIMUM PANEL THICKNESS = 10.

Con boccole ST Ø5 mm spessore minimo A = 12,5  
With housing ST Ø5 mm min. thickness A = 12,5  
Con boccole ST Ø8 mm spessore minimo A = 14  
With housing ST Ø8 mm min. thickness A = 14

Con boccole STM Ø5 mm spessore minimo A = 10  
With housing STM Ø5 mm min. thickness A = 10  
Con boccole STM Ø8 mm spessore minimo A = 14  
With housing STM Ø8 mm min. thickness A = 14





## Boccole tipo ST150 Housing ST150 type

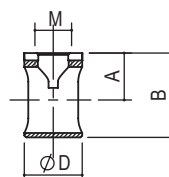
**CATAS**  
Test Report 222136

BOCCOLA ST:  
CARATTERIZZATA  
DALL'ESSERE SENZA BORDO.  
PER FORO NON PASSANTE.  
SPESSORE MIN. DEL  
PANNELLO = 12,5

ST BUSHING:  
CHARACTERISED BY BEING  
EDGELESS.  
FOR NON-THROUGH HOLE.  
MINIMUM PANEL THICKNESS  
= 12,5



acciaio  
steel



tipo type	ØD	misura measure	A	B	M	finitura finishing	kg / 1000pz	pcs/ pack	pcs/ box
P.ST150.	5	05.12.5.	6,25	9,6	4	02 zincato white zinc	0,7	100	2000
		05.14.	7	10,6			0,8	100	2000
		05.16.	8	12,6			1,0	100	2000
		05.18.	9	14,6			1,2	100	2000
	8	08.18.	9	14,5	5		3,0	100	2000
		08.20.	10	16,5			3,6	100	2000
		08.22.	11	18,5			4,2	100	2000
		08.25.	12,5	21,5			5,2	100	2000
		08.30.	15	27,5			6,8	100	2000

es./e.g.: P.ST150.08.18.02

## Boccole tipo STM150 Housing STM150 type

**CATAS**  
Test Report 222136

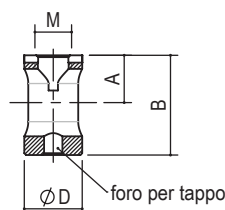
BOCCOLA  
STM: CARATTERIZZATA  
DALL'ESSERE SENZA BORDO  
E DI LUNGHEZZA PARI ALLO  
SPESSORE DEL PANNELLO.

SPESSORE MINIMO DEL  
PANNELLO = 10.  
IL FORO SUL LATO OPPOSTO  
DEL GRANO PERMETTE  
L'ASSEMBLAGGIO DEL TAPPO  
(VEDI PAGINA GRANI E TAPPI).

STM BUSHING:  
CHARACTERISED BY BEING  
EDGELESS AND WITH A  
LENGTH EQUAL TO THE  
THICKNESS OF THE PANEL.  
MINIMUM PANEL THICKNESS  
= 10  
THE HOLE ON THE OPPOSITE  
SIDE OF THE GRAIN ALLOWS  
CAP ASSEMBLY (SEE GRAINS  
AND CAPS PAGE).



acciaio  
steel



tipo type	ØD	misura measure	A	B	M	finitura finishing	kg / 1000pz	pcs/ pack	pcs box
P.STM150.	5	05.10.	5	9,6	4	02 zincato white zinc	1	100	2000
	8	08.14.	7	13,6	5		3	100	2000
		08.18.	9	17,6			4	100	2000

es./e.g.: P.STM150.05.10.02





## Perni filettati Threaded dowels

**CATAS**  
Test Report 222136



BUSSOLE A RICHIESTA  
SPECIFICARE DIMENSIONI  
E TIPO.

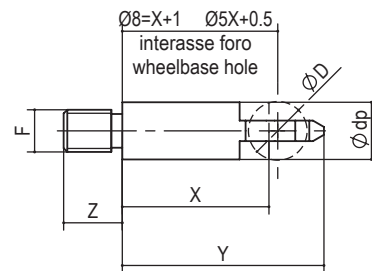
BUSHING ON REQUEST  
SPECIFY SIZE AND TYPE.

Ø5

Ø8



acciaio  
steel



tipo type	misura measure	ØD	Ødp	X	Y	Z	F	finitura finishing	kg / 1000pz	pcs/ pack	pcs/ box
P.150	05.20.5.	5	4,8	20,5	26	5,5	M4	02 zincato bianco white zinc	3,4	100	2000
	05.23.5.			23,5	29				3,8	100	2000
	08.20.	8	7,8	20	27,5	8	M6		8,6	100	2000
	08.23.			23	30,5				9,7	100	2000

es/e.g.: P.150.05.20,5.02

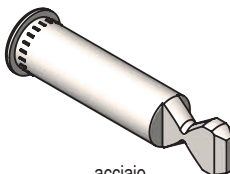
## Perni con testa Dowels with head

**CATAS**  
Test Report 222136

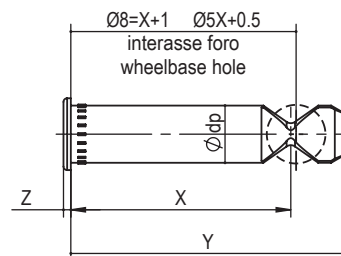
i perni Ø5 con le boccole Ø5 dowels Ø5 with housing Ø5  
i perni Ø8 con le boccole Ø8 dowels Ø8 with housing Ø8

Ø5

Ø8



acciaio  
steel



tipo type	misura measure	ØD	Ødp	X	Y	Z	E	finitura finishing	kg / 1000pz	pcs/ pack	pcs/ box
P150.	T05.30.5.	5	4,8	30,5	36	0,8	6,5	02 zincato bianco white zinc	4,7	100	2000
	T05.33.5.			33,5	39				5,1	100	2000
	T08.30.	8	7,8	30	37,5	1	9,5		11,7	50	1000
	T08.33.			33	40,5				12,8	50	1000

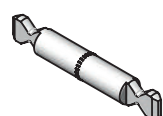
es/e.g.: P150.T05.30,5.02



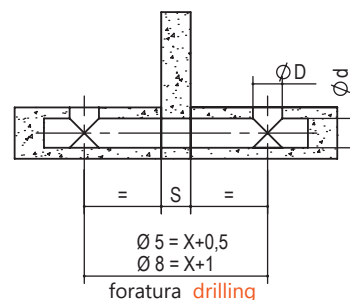
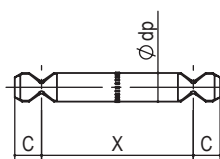
## Perni passanti Double dowels

**CATAS**  
Test Report 222136

i perni Ø5 con le boccole Ø5    dowels Ø5 with housing Ø5  
i perni Ø8 con le boccole Ø8    dowels Ø8 with housing Ø8



acciaio  
steel



tipo type	misura measure	ØD	Ød	Ødp	X	S	C	finitura finishing	kg / 1000pz	pcs/ pack	pcs/ box
P.150.	P05.041.	5	5	4,8	41,5	0	5,5	02 zincato bianco white zinc	5,9	100	2000
	P05.049,5.				41,5	8			7	100	2000
	P08.041.	8	8	7,8	41	0	7,5		15,4	50	1000
	P08.049.				41	8			18,3	50	1000

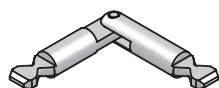
es./e.g.: P.150.P05.049,5.02

su richiesta altre misure di interasse "X".  
other measure "X" on request .

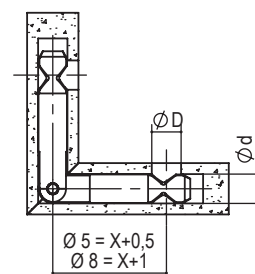
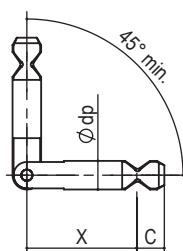
## Perni angolari Corner dowels

**CATAS**  
Test Report 222136

i perni Ø5 con le boccole Ø5    dowels Ø5 with housing Ø5  
i perni Ø8 con le boccole Ø8    dowels Ø8 with housing Ø8



acciaio  
steel



tipo type	misura measure	ØD	Ød	Ødp	X	C	finitura finishing	kg / 1000pz	pcs/ pack	pcs/ box
NG150	05.30,5.	5	5	4,8	30,5	5,5	02 zincato bianco white zinc	8,3	50	2000
	08.30.	8	8	7,8	30	7,5		21	25	1000

es./e.g.: NG150.05.030,5.02



## Grani Grains

I GRANI HANNO UNA LUNGHEZZA IN BASE ALL'ALTEZZA DELLA BOCCOLA E ALLO SPESSORE DEL PIANO IN MODO DA POTER FISSARE IL TAPPO DI FINITURA. CON LA BUSSOLA STM IL TAPPO PUO' ESSERE ASSEMBLATO ANCHE SUL LATO OPPOSTO.

GRAINS HAVE A SPECIFIC LENGTH DEPENDING ON THE HEIGHT OF THE BUSHING AND THE THICKNESS OF THE SURFACE SO AS TO FIX THE FINISH CAP. IN THE STM TYPE BUSHINGS THE CAP CAN ALSO BE FITTED ON THE OPPOSITE SIDE.



i grani M4 con le boccole Ø5 grains M4 with housing Ø5  
i grani M5 con le boccole Ø8 grains M5 with housing Ø8



acciaio  
steel



esagono 2  
hexagon 2



esagono 2,5  
hexagon 2,5

tipo type	spess. piano panel thickness	Ø bussola Ø housing	misura measure	M	L	finitura finishing	kg / 1000pz	pcs/ pack	pcs/ box
P.G150.	10	05	05.3.5.	4	3,5	01 brunito - burnished	0,2	100	1000
	12,5		05.04.		4		0,3	100	1000
	14		05.05.		5		0,4	100	1000
	16		05.06.		6		0,5	100	1000
	18		05.07.		7		0,6	100	1000
	14	08	08.04.	5	4		0,4	100	1000
	18		08.06.		6		0,7	100	1000
	22		08.08.		8		1	100	1000
	25		08.10.		10		1,2	100	1000
	30		08.12.		12		1,6	100	1000

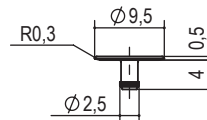
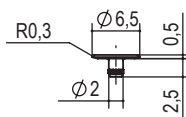
es/e.g.: P.G150.08.8.01

## Tappi Covers cup

I tappi Ø6,5 con le boccole Ø5 M4 grains and covers 6,5 with housing 5  
I tappi Ø9,5 con le boccole Ø8 M5 grains and covers 9,5 with housing 8



ottone  
brass



tipo type	Ø bussola Ø housing	misura measure	finitura finishing	kg / 1000pz	pcs/ pack	pcs/ box
P.T150.	5	05.	07 nichelato nickel	0,17	100	5000
	8	08.		0,36	100	5000

es/e.g.: P.T150.08.07



## Giunzioni Connecting fittings

# Serie GN200 GN200 Series

GIUNZIONE DELLA SERIE GN200  
PROGETTATA PER  
L'ASSEMBLAGGIO E PER  
ESSERE ABBINATA AI  
LIVELLATORI.

DETTAGLIO A: BOCCOLA  
ECCENTRICA CARATTERIZZATA  
DALL' AVERE FORO PASSANTE  
CHE PERMETTE IL PASSAGGIO  
DI UNA CHIAVE ES 4.

DETTAGLIO B: MOSTRA LA  
CHIAVE ESAGONALE 4  
PASSANTE ATTRAVERSO LA  
GIUNZIONE PER LA  
REGOLAZIONE DEL  
LIVELLATORE.

DETTAGLIO C: MOSTRA LA  
SUPERFICIE DI APPOGGIO  
SOTTO LA GIUNZIONE CHE  
AUMENTA LA PORTATA DELLA  
BASE.

DETTAGLIO D: MOSTRA GLI  
ULTIMI 30° DI ROTAZIONE, NEI  
QUALI CI SONO INCREMENTI  
DECIMALI DELLA "TIRATA" IN  
MODO DA GARANTIRE  
L'EFFETTO DI ANTIROTAZIONE.

DETTAGLIO E: OSSERVARE LA  
GRANDE SUPERFICIE DI SPINTA  
A GARANZIA DELLA TENUTA.

GN200 SERIES CONNECTING  
FITTING DESIGNED FOR  
ASSEMBLY AND TO BE  
COMBINED WITH LEVEL  
ADJUSTERS.

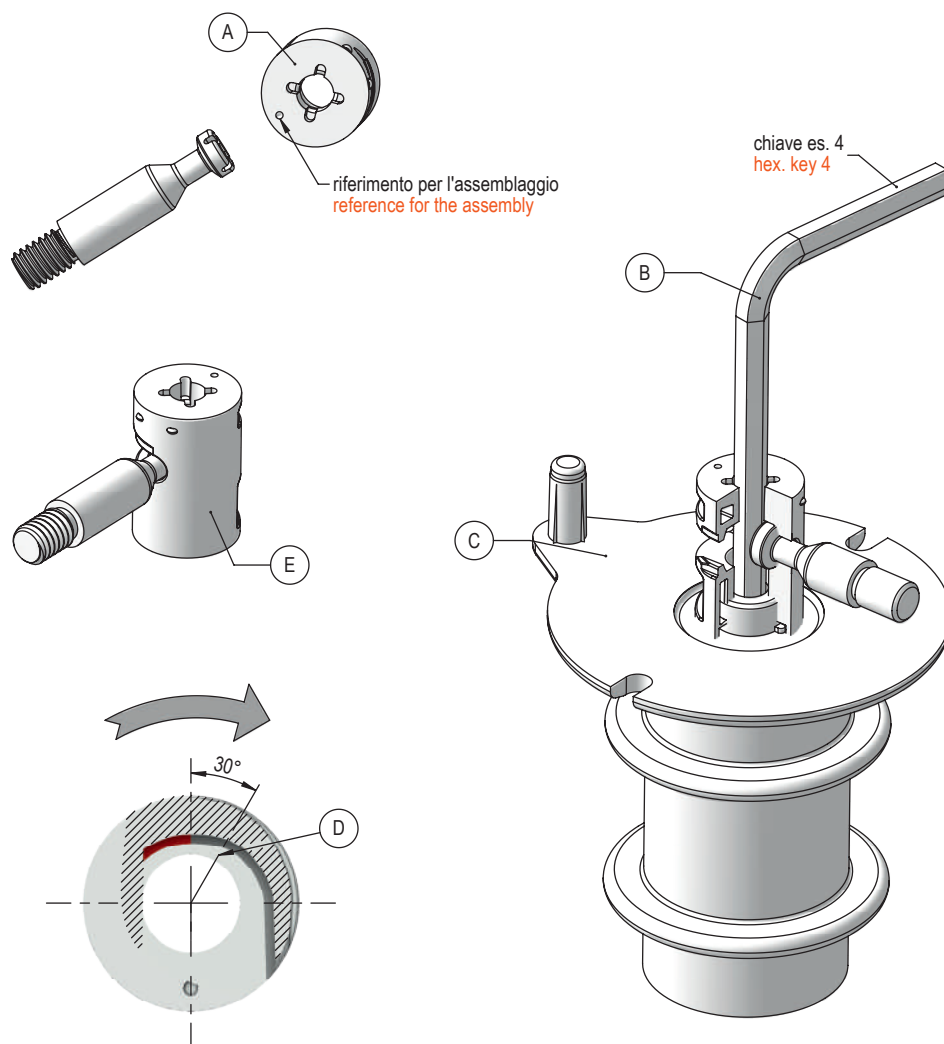
DETAIL A: ECCENTRIC HOUSING  
CHARACTERISED BY HAVING A  
THROUGH HOLE THAT ALLOWS  
THE PASSAGE OF AN HEX. KEY  
4.

DETAIL B: SHOWS THE HEX.  
KEY 4 PASSING THROUGH THE  
CONNECTING FITTING FOR THE  
ADJUSTMENT OF THE LEVEL  
ADJUSTER.

DETAIL C: SHOWS THE  
SUPPORT SURFACE UNDER THE  
CONNECTING FITTING THAT  
INCREASES THE CAPACITY OF  
THE BASE.

DETAIL D: SHOWS LAST 30°  
ROTATION, IN WHICH THERE  
ARE DECIMAL INCREASES OF  
THE "TIGHTENING" TO ENSURE  
THE ANTI-ROTATION EFFECT.

DETAIL E: OBSERVE THE HUGE  
THRUST SURFACE TO ENSURE  
HOLD.





## Esempi di applicazioni boccole serie GN200

### Application examples housing GN200 series

BOCCOLA EST:  
CARATTERIZZATA  
DALL'ESSERE SENZA BORDO.  
NORMALMENTE UTILIZZATA  
NELLA PARTE SUPERIORE IN UN  
FORO CIECO.

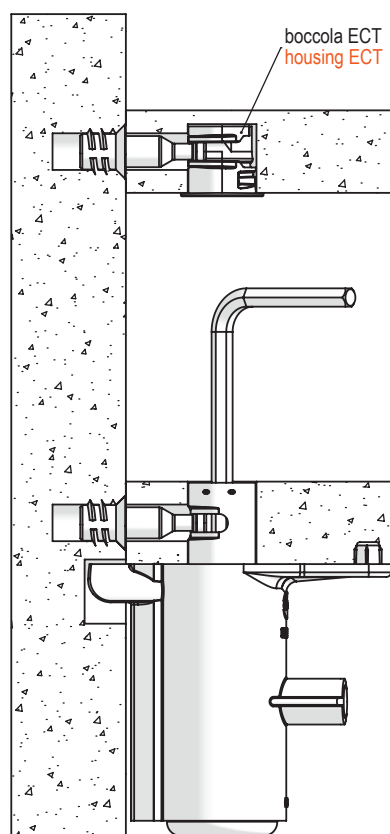
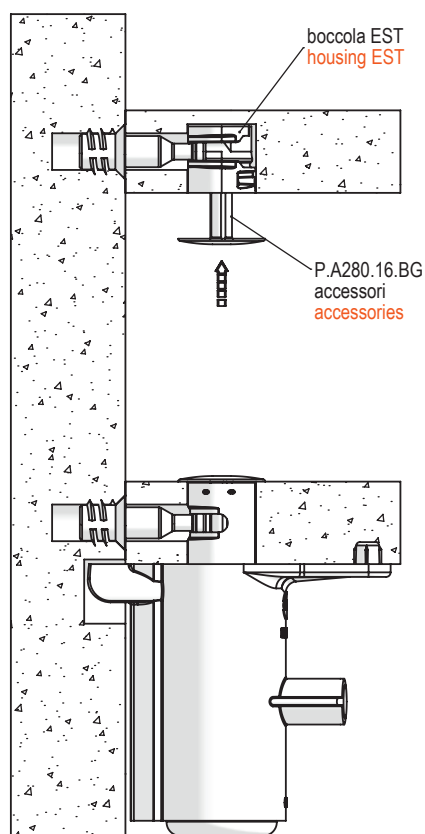
BOCCOLA ECT:  
CARATTERIZZATA DALL'ESSERE  
CON BORDO.  
NORMALMENTE UTILIZZATA  
NELLA PARTE SUPERIORE IN UN  
FORO CIECO.

ESSENDO IL RIFERIMENTO DI  
ASSEMBLAGGIO DI MINIMO  
IMPATTO ESTETICO LA  
VERSIONE NICHELATA PUO'  
ESSERE ASSEMBLATA SENZA IL  
TAPPO, ANCHE SE DISPONIBILE.

EST HOUSING: CHARACTERISED  
BY BEING EDGELESS.  
NORMALLY USED AT THE TOP IN  
A BLIND HOLE.

ECT HOUSING: CHARACTERISED  
BY BEING WITH EDGE.  
NORMALLY USED AT THE TOP IN  
A BLIND HOLE.

BEING THE ASSEMBLY  
REFERENCE OF MINIMUM  
AESTHETIC IMPACT, THE NICKEL-  
PLATED VERSION CAN BE  
ASSEMBLED WITHOUT THE CAP,  
EVEN IF AVAILABLE.





## Boccola con e senza testa tipo EST55 e ECT55

### Housing system with or without collar EST55 e ECT55 type

**CATAS**  
Test Report 84578/1

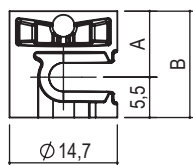
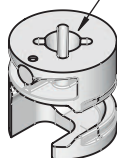
BOCCOLE PER PIANI  
SUPERIORI CON TAGLIO A  
CROCE NON PASSANTE.

HOUSING WITH CROSS CUT  
NOT PAST, USED TO UPPER  
FLOORS

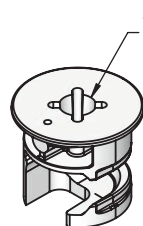
Ø 15

zama  
die-cast

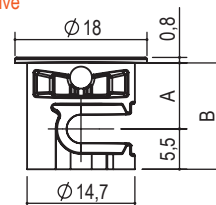
taglio croce  
star screwdrive



senza testa EST55  
without collar EST55



taglio croce  
star screwdrive



con testa ECT55  
with collar ECT55

tipo type	misura measure	A	B	finitura finishing	kg / 1000pz	pcs/ pack	pcs/ box
P. EST55.15.	18.	9	14,5	00 grezzo raw 05 ottolato brass 06 bronzo bronzed 07 nichelato nickel	8	50	2000

es./e.g.: P. EST55.15.18.00

tipo type	misura measure	A	B	finitura finishing	kg / 1000pz	pcs/ pack	pcs/ box
P. ECT55.15.	18.	9	14,5	00 grezzo raw 05 ottolato brass 06 bronzo bronzed 07 nichelato nickel	8	50	2000

es./e.g.: P. ECT55.15.18.00

## Boccola senza testa tipo EST88

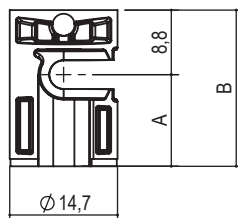
### Housing system without collar EST88 type

**CATAS**  
Test Report 84578/1

Ø 15

zama  
die-cast

taglio croce  
star screwdrive



tipo type	misura measure	A	B	finitura finishing	kg / 1000pz	pcs/ pack	pcs/ box
P. EST88.15.	25.	12,5	21,3	00 grezzo raw 05 ottolato brass 06 bronzo bronzed 07 nichelato nickel	13	50	2000

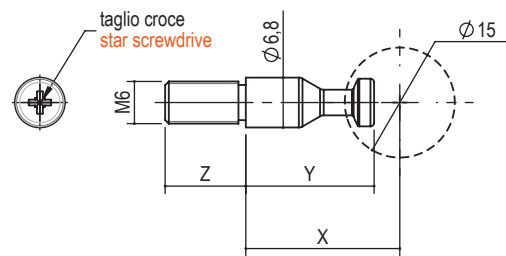
es./e.g.: P. EST88.15.25.00



## Perni filettati Threaded dowels

**CATAS**  
Test Report 84578/1

Ø7



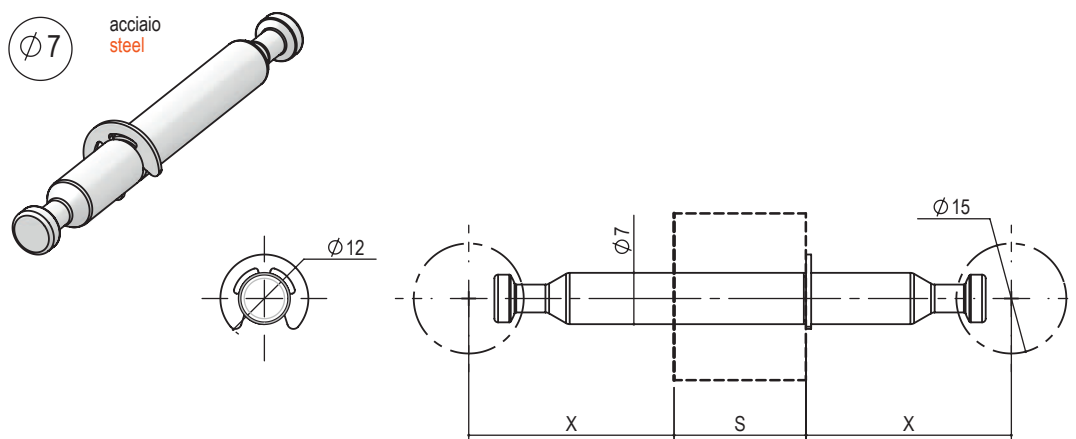
tipo type	misura measure	X	Y	Z	finitura finishing	kg / 1000pz	pcs/ pack	pcs/ box
P.EC68.	21.M6x08.	21	17,5	8	02 zincato bianco white zinc	6,0	50	2000
	21.M6x11.			11		6,2		
	28.M6x08.	28	24,5	8		8,4		
	31.M6x08	31	27,5	8		9,5		

es./e.g.: P.EC68.21.M6x11.02





## Perni passanti Double dowels



tipo <u>type</u>	misura <u>measure</u>	X	S	finitura <u>finishing</u>	kg / 1000pz	pcs/ pack	pcs/ box
A.ECP68.	56	28	0	02 zincato bianco white zinc	14,5	25	1000
	28.18.		18		21,2	25	1000
	28.25.		25		24,0	25	500
	...	...			...	...	...

su richiesta altre misure di interasse "X"  
other wheel base "X" on request .

es./e.g.: A.ECP68.56.02



## Giunzioni Connecting fittings

# Serie GN300 GN300 Series

GIUNZIONE REGGIPIANO  
GN300 CON DISPOSITIVO  
ANTISGANCIAMENTO.

DETTAGLIO A: GIUNTO E  
SQUADRETTA  
CARATTERIZZATI DALL'AVERE  
FORI PASSANTI CHE  
PERMETTONO IL PASSAGGIO  
DI UNA CHIAVE ES.4 PER LA  
REGOLAZIONE DEL  
LIVELLATORE DELLA SERIE  
LV330 e LV600.

DETTAGLIO B: IL DISPOSITIVO  
DI ANTISGANCIAMENTO E'  
AZIONABILE SIA DA SOPRA  
SIA DA SOTTO.

DETTAGLIO C: CHIAVE ES.4  
PASSANTE ATTRAVERSO LA  
GIUNZIONE PER LA  
REGOLAZIONE DEL  
LIVELLATORE.

DETTAGLIO D: SISTEMA DI  
TENUTA ASSIALE DEI RIPIANI  
A SOLA PRESSIONE CHE  
FACILITA L'ASSEMBLAGGIO  
AUTOMATIZZATO.

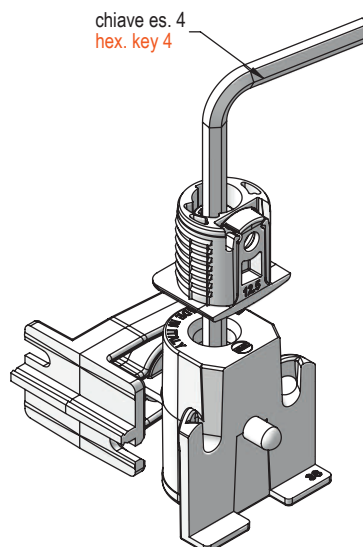
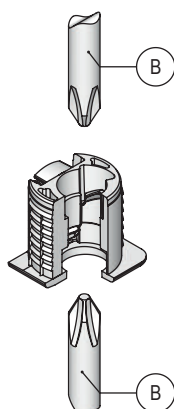
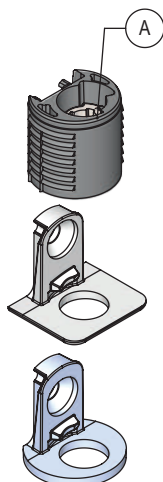
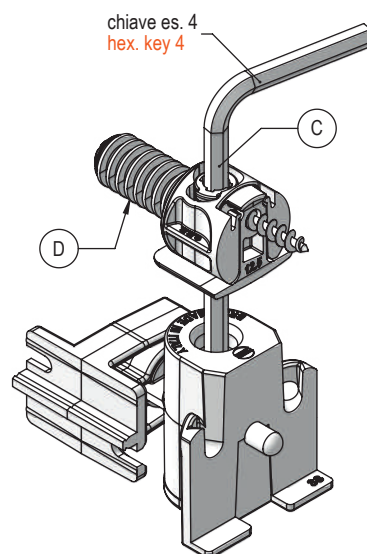
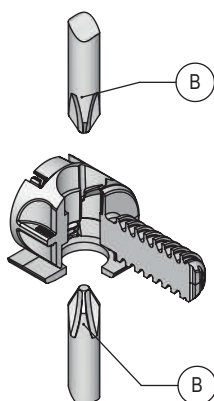
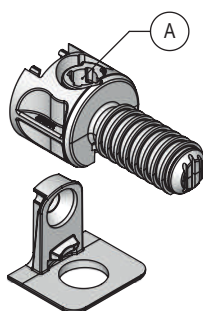
GN300 SHELF SUPPORT  
CONNECTING FITTING WITH  
ANTI-RELEASE DEVICE.

DETAIL A: CONNECTING  
FITTING AND BRACKET  
CHARACTERISED BY HAVING  
THROUGH HOLES THAT  
ALLOW THE PASSAGE OF AN  
HEX. KEY 4 TO ADJUST THE  
LV330 AND LV600 SERIES  
LEVEL ADJUSTER TO WHICH  
IT CAN BE COMBINED.

DETAIL B: SHOWS HOW THE  
ANTI-RELEASE DEVICE CAN  
BE OPERATED EITHER FROM  
ABOVE OR FROM BELOW.

DETAIL C: SHOWS THE HEX.  
KEY 4 PASSING THROUGH  
THE CONNECTING FITTING  
FOR THE ADJUSTMENT OF  
THE LEVEL ADJUSTER.

DETAIL D: SHOWS THE  
PRESSURE ONLY HOLDING  
SYSTEM OF THE SHELVES  
THAT FACILITATES  
AUTOMATED ASSEMBLY.





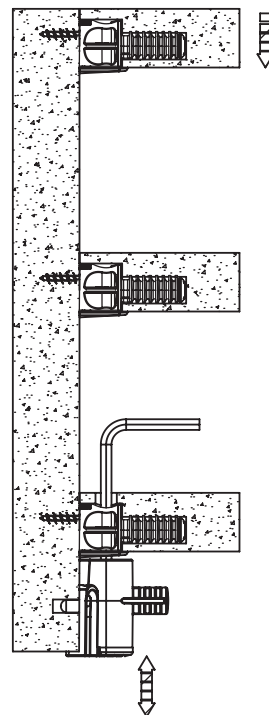
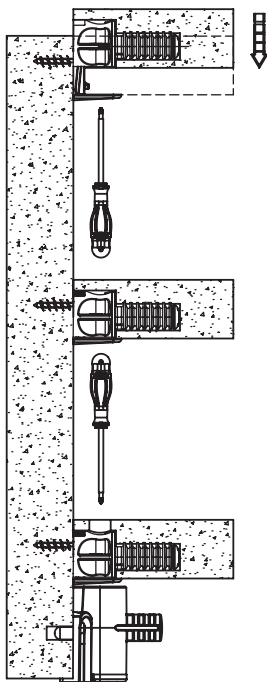
## Esempi di applicazioni giunzioni serie GN300-GN330

### Application examples connecting fittings GN300-GN330 series

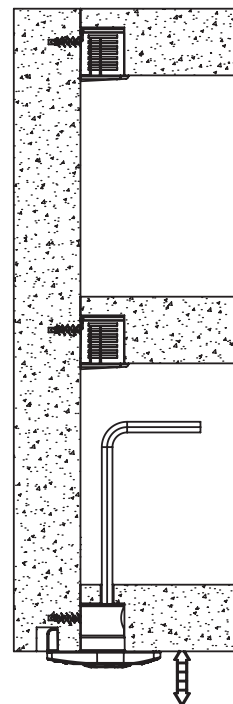
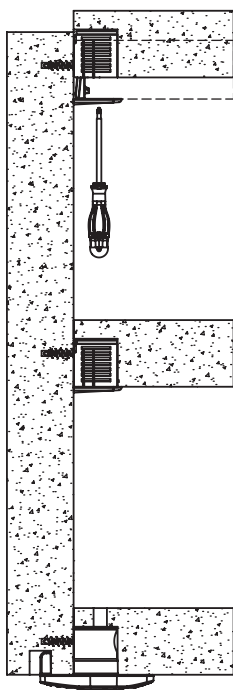
#### Serie GN300 GN300 series

L'ASSEMBLAGGIO DEL PIANO AVVIENE CON UN MOVIMENTO VERTICALE. IL FISSAGGIO DELLA GIUNZIONE PUO' AVVENIRE SIA DAL LATO SUPERIORE CHE INFERIORE. E' POSSIBILE PASSARE ATTRAVERSO LA GIUNZIONE PER EFFETTUARE LA REGOLAZIONE DEL LIVELLATORE DELLA SERIE LV330 O LV600 CON CHIAVE ES. 4.

THE ASSEMBLY OF THE SHELF IS PERFORMED WITH VERTICAL MOVEMENT. CONNECTING FITTING FIXING CAN BE CARRIED OUT BOTH FROM THE TOP AND BOTTOM SIDE. PASSING THROUGH THE CONNECTING FITTING WITH AN HEX. KEY 4 CAN PERFORM ADJUSTMENT OF THE LV 330 OR LV600 SERIES LEVEL ADJUSTER. THE SAME CONNECTING FITTING CAN BE USED ON ALL UPPER LOWER AND INTERMEDIATE SHELVES.



#### Serie GN330 GN330 series





## Giunto ripiano tipo GN301 Shelf support GN 301 type



Test Report 117684/1-117684/2

BUSSOLA RIPIANO CON SISTEMA ANTISGANCIAMENTO INTEGRATO AZIONABILE SIA SUPERIORMENTE SIA INFERIORMENTE. IL FORO PASSANTE PERMETTE IL PASSAGGIO DI UNA CHIAVE ES.4. L'ASSEMBLAGGIO E' SOLAMENTE A PRESSIONE ORIZZONTALE.

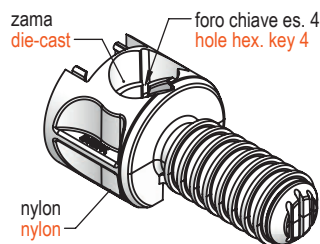
SHELF BUSH WITH INTEGRATED ANTI-RELEASE SYSTEM THAT CAN BE OPERATED ABOVE AND BELOW. THE THROUGH HOLE ALLOWS THE PASSAGE OF AN HEX. KEY 4. SNAP-ON ASSEMBLY HORIZONTAL ONLY.



400 N

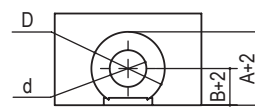
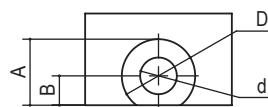
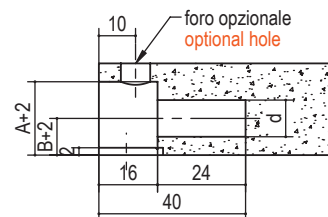
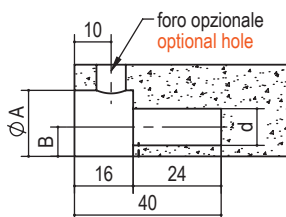
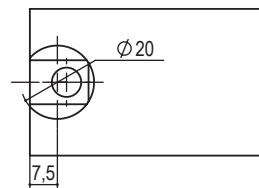
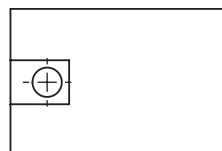


600 N



tipo type	misura measure	ØD	A	B	Ød	finitura finishing	kg / 1000pz	pcs/ box	pcs/ pack
A.GN301.	16.	16	14	6	8	55 grigio grey	5,3	2000	50
	20.	20	18	8			8,1	1000	50
	22.	22	20	9	10		8,9	1000	50
	25.	25	22,5	10			11,0	1000	50

es./e.g.: A.GN301.20.55



lavorazioni per squadrette tipo GN301  
machining for bracket support type GN301

lavorazioni per squadrette tipo GN311  
machining for bracket support type GN311

## Giunto ripiano tipo GN331 Shelf support GN 331 type

BUSSOLA REGGIRIPIANO CON SISTEMA ANTISGANCIAMENTO INTEGRATO AZIONABILE SIA SUPERIORMENTE SIA INFERIORMENTE. IL FORO PASSANTE PERMETTE IL PASSAGGIO DI UNA CHIAVE ES.4. L'ASSEMBLAGGIO E' SOLAMENTE A PRESSIONE.

SHELF BUSH WITH INTEGRATED ANTI-RELEASE SYSTEM THAT CAN BE OPERATED ABOVE AND BELOW. THE THROUGH HOLE ALLOWS THE PASSAGE OF AN HEX. KEY 4. SNAP-ON ASSEMBLY ONLY.

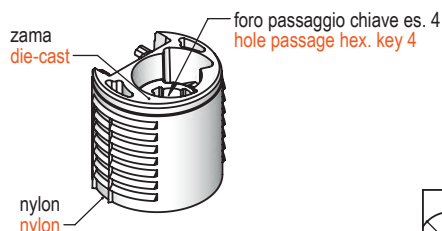


400 N



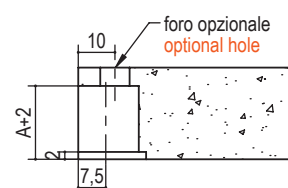
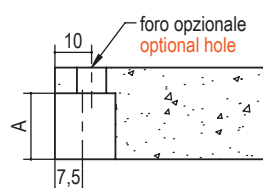
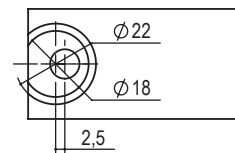
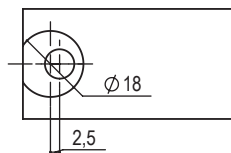
DIMA ASSEMBLAGGIO MANUALE  
MANUAL ASSEMBLY TEMPLATE

www.omm.name  
omm@omm.name  
tel. 0362.622377



tipo type	misura measure	A	finitura finishing	kg / 1000pz	pcs/ box	pcs/ pack
A.GN331.	18x14.	14	55 grigio grey	4,8	2500	50
	18x18.	18		6,6	2000	50
	18x23.	23		8,1	2000	50

es./e.g.: A.GN331.18x18.55





## Squadretta reggipiano foro svasato tipo GN301 - GN311

### Bracket support countersunk hole GN301 - GN311 type

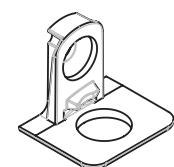
CON FORO PASSANTE PER  
VITE TRUCIOLARE Ø4.

BRACKET FOR CHIPBOARD  
SCREW 4 HOLE.

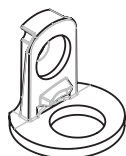
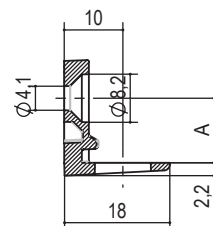
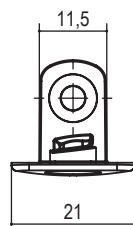


400 N

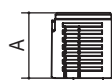
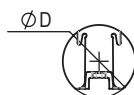
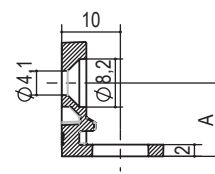
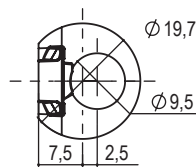
zama  
die-cast



tipo - type P.GN301FP.



tipo - type P.GN311FP.



		tipo type	misura measure	A	finitura finishing	kg / 1000pz	pcs/ pack	pcs/ box
Ø16	A=14	P.GN301FP	09.	9	07 nichelato nickel	5,5	100	2000
Ø20 - Ø22	A=18	P.GN301FP	11.	11		6,2		
			12,5.	12,5		6,9		
Ø22	A=18	P.GN301FP	14.	14.		6,8		
Ø25	A=23	P.GN301FP P.GN311FP	15.	15.				

es./e.g.: P.GN301FP.11.07



## Squadretta reggipiano con tassello preassemblato tipo GN301 - GN311 Bracket support preassembled with rawlplug GN301 - GN311 type

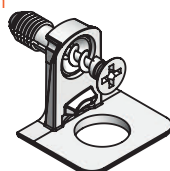
CON BUSSOLA Ø 5 AD  
ESPANSIONE  
PREMONTATA.

BRACKET WITH  
PREMONTED Ø 5  
EXPANDING SOCKET.



400 N

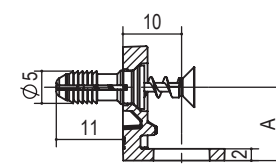
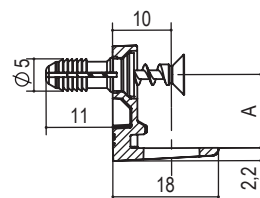
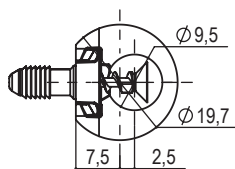
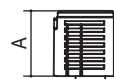
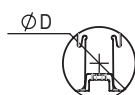
zama nylon  
die-cast nylon



A.GN301VB.



A.GN311VB.



		tipo type	misura measure	A	finitura finishing	kg / 1000pz	pcs/ pack	pcs/ box
Ø20 - Ø22	A=18	A.GN301VB	11.	11	07 nichelato nickel	7,2	100	2000
			12,5.	12,5				
Ø25	A=23	A.GN301VB A.GN311VB	15.	15.		7,7		

es./e.g.: A.GN301VB.11.07

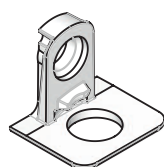
CON FORO PASSANTE PER  
VITE EURO O VITE  
SPECIALE M6 A RICHIESTA.

WITH HOLE FOR SCREW  
EURO OR SPECIAL SCREW  
M6 A REQUEST.

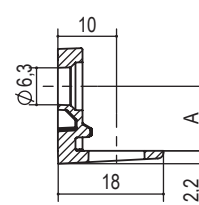
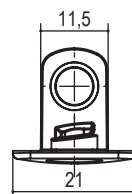
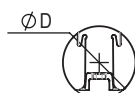




400 N

zama  
die-cast

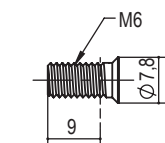


P.GN301EU.



		tipo type	misura measure	A	finitura finishing	kg / 1000pz	pcs/ pack	pcs/ box
Ø16	A=14	P.GN301EU	09.	9	07 nichelato nickel	5,3	100	2000
Ø20 - Ø22	A=18	P.GN301EU	11.	11		6,0		
			12,5.	12,5				
Ø25	A=23	P.GN301EU	15.	15.		6,6		

es./e.g.: P.GN301EU.11.07



VITE SPECIALE M6  
SPECIAL SCREW M6  
S.P.A585.M6.12.07



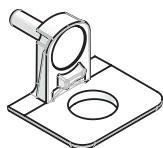
## Squadretta reggipiano con perno Ø3 tipo GN301 - GN311

### Bracket support with pin Ø3 GN301 - GN311 type



400 N

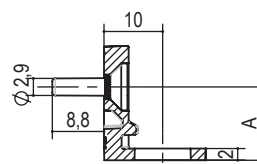
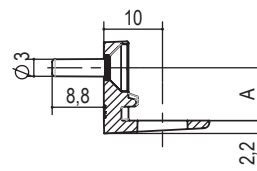
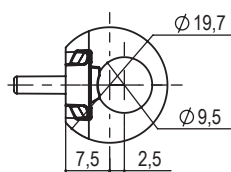
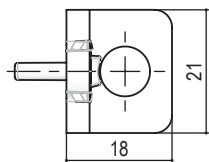
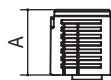
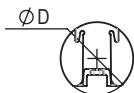
zama  
die-cast



A.GN301PR.



A.GN311PR.



		tipo type	misura measure	A	finitura finishing	kg / 1000pz	pcs/ pack	pcs/ box
Ø16	A=14	A.GN301PR	09.	9	07 nichelato nickel	12,9	100	2000
Ø20 - Ø22	A=18	A.GN301PR	11.	11		13,6		
			12.5.	12.5		14,3		
Ø22	A=18	A.GN301PR	14.	14.		14,2		
Ø25	A=23	A.GN301PR A.GN311PR	15.	15.				

es./e.g.: A.GN311.PR.07

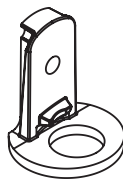
## Squadretta reggipiano con foro M4 tipo GN301 - GN311

### Bracket support with hole M4 GN301 - GN311 type

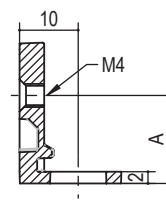
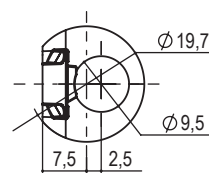
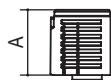
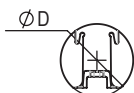


400 N

zama  
die-cast



P.GN311M4.



		tipo type	misura measure	A	finitura finishing	kg / 1000pz	pcs/ pack	pcs/ box
Ø25	A=23	P.GN311M4	15.	15.	07 nichelato nickel	7,5	100	2000

es./e.g.: P.GN311.M4.07



## Squadretta reggipiano foro svasato tagliata tipo GN301 Bracket support countersunk hole cut GN301 type

CON FORO PASSANTE  
PER VITE TRUCIOLARE Ø4.

BRACKET FOR  
CHIPBOARD SCREW 4  
HOLE.

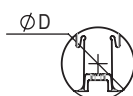
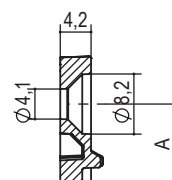


400 N

zama  
die-cast



P.GN301SA.FP.



		tipo type	misura measure	A	finitura finishing	kg / 1000pz	pcs/ pack	pcs/ box
	Ø16	A=14	P.GN301SA.FP	09.	9	2,6	100	2000
	Ø20 - Ø22	A=18	P.GN301SA.FP	11.	11	3,28		
				12,5.	12,5	3,3		
	Ø22	A=18	P.GN301SA.FP	14.	14.	3,82		
	Ø25	A=23	P.GN301SA.FP	15.	15.	3,82		

es./e.g.: P.GN301SA.FP.11.07

CON FORO PASSANTE  
PER VITE EURO E VITE  
SPECIALE M6 A  
RICHIESTA .

WITH HOLE FOR SCREW  
EURO AND SPECIAL  
SCREW M6 A REQUEST.

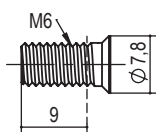
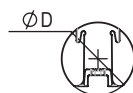
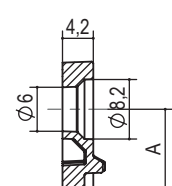
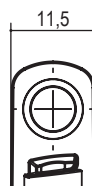


400 N

zama  
die-cast



P.GN301SA.EU.



VITE SPECIALE M6  
SPECIAL SCREW M6  
S.P.A585.M6.12.07

		tipo type	misura measure	A	finitura finishing	kg / 1000pz	pcs/ pack	pcs/ box
	20 - 22	A=18	P.GN301FP.EU	11.	11	3,1	100	2000

es./e.g.: P.GN301SA.EU.11.07





## Squadretta reggipiano tipo P.A360

### Bracket support P.A360 type

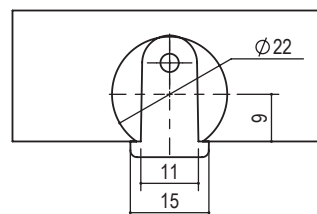
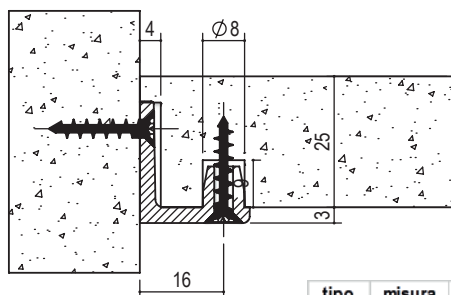
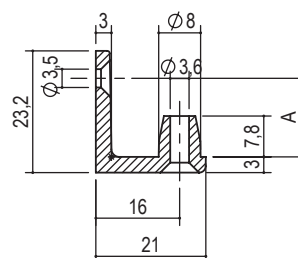
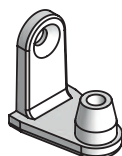
ATTRAVERSO IL FORO  
DELLA SQUADRETTA SI PUO'  
FISSARE IL RIPIANO CON  
UNA VITE Ø3.5

THROUGH THE HOLE  
SQUARE CAN 'FIX THE PLAN  
WITH A SCREW Ø3.5



400 N

zama  
die-cast



tipo type	misura measure	A	finitura finishing	kg / 1000pz
P.A360.	15.	15,0	05 ottolato brass	9
			07 nichelato nickel	

es./e.g.: P.A360.15.05

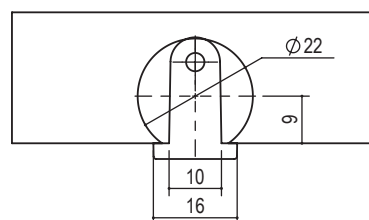
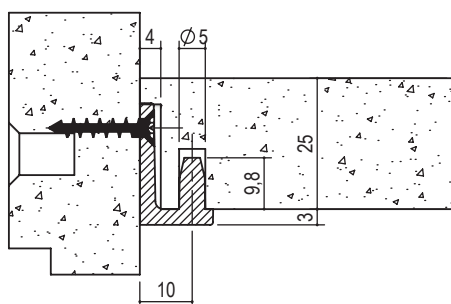
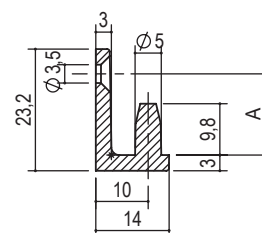
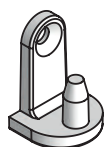
## Squadretta reggipiano tipo P.A361

### Bracket support P.A361 type



400 N

zama  
die-cast



tipo type	misura measure	A	finitura finishing	kg / 1000pz
P.A361.	15,5.	15,5	05 ottolato brass	8
			07 nichelato nickel	

es./e.g.: P.A361.15,5.05



## Giunzione tipo GN361 Invisible shelf support GN361



400 N

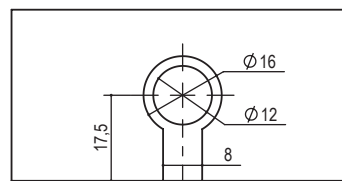
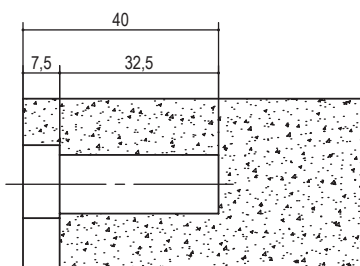
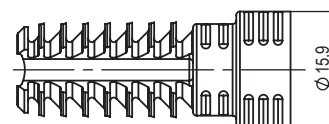
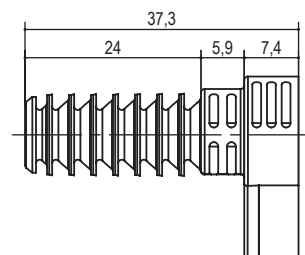
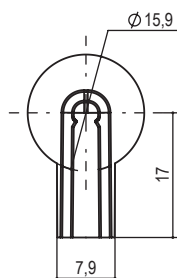
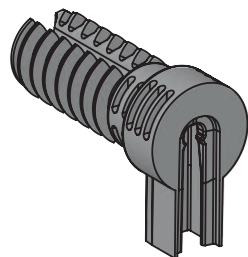


400 N

IL REGGIRIPIANO GN361  
PUO' ESSERE  
COMBINATO CON LE  
VITI DELLA GAMMA  
GN400.  
VEDERE TABELLA  
RIASSUNTIVA DEI  
POSSIBILI  
ACCOPIAMENTI CON  
LE VITI DELLA SERIE  
GN400.

THE GN361 SHELF  
SUPPORT CAN  
COMBINED WITH THE  
GN400 SERIES  
SCREWS.  
SEE THE TABLE WITH  
POSSIBLE  
COMBINATIONS.

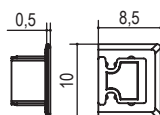
nylon grigio  
gray nylon



tipo type	misura measure	finitura finishing	kg / 1000pz	pcs/ pack	pcs/ box
P.GN361.	16.17.	53 nero black	4,5	50	1000

es./e.g.: P.GN361.16.17.53

ACCESSORI  
ACCESSORIES



tappo in plastica  
plastic cover cup  
cod. P.T361.08.00

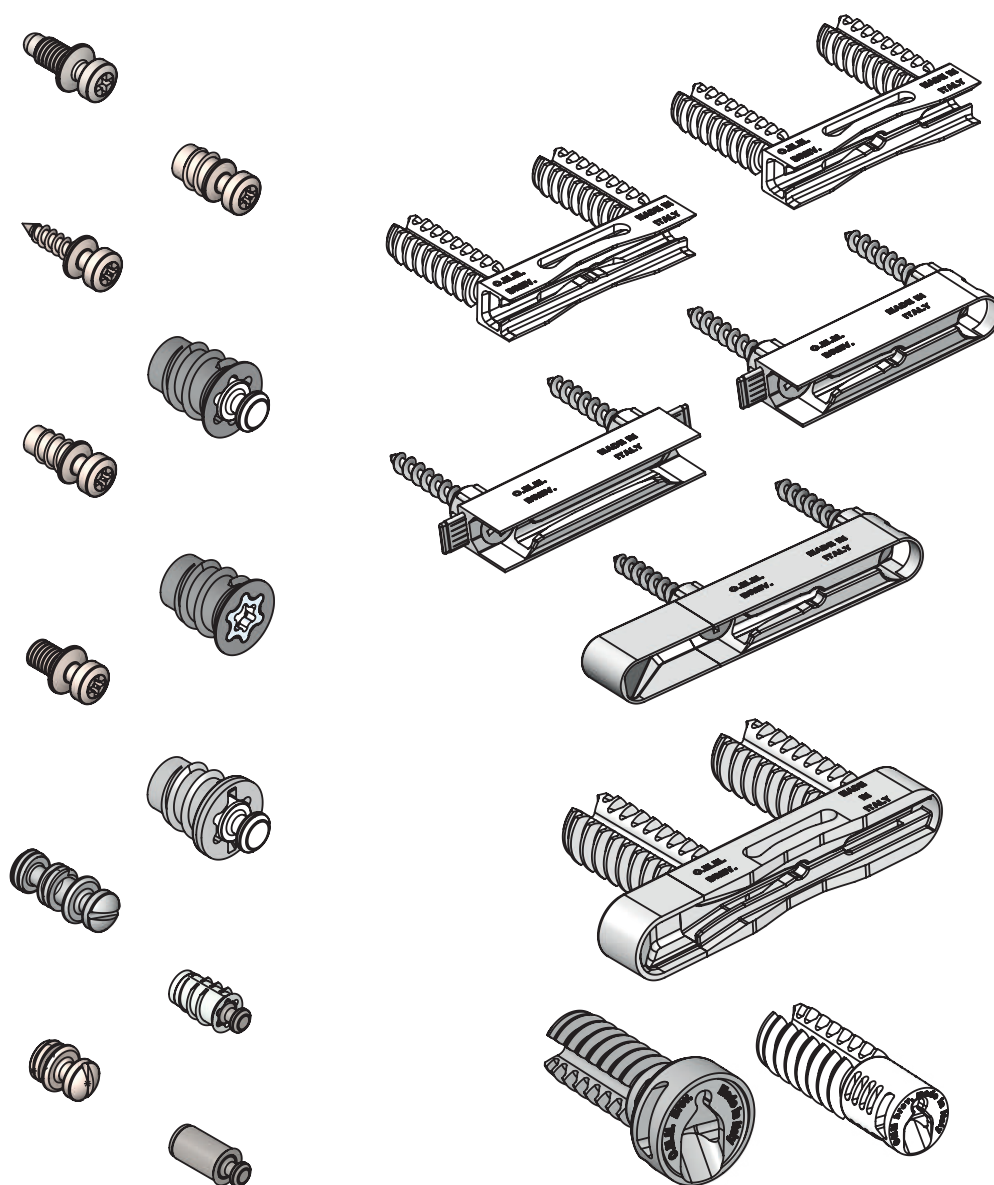


## Giunzioni Connecting fittings

# Serie GN400 GN400 Series

GIUNZIONE DELLA SERIE GN400  
E' CARATTERIZZATA  
DALL'ESSERE COMPLETAMENTE  
A SCOMPARSA UNA VOLTA  
ASSEMBLATA.

THE GN400 SERIES  
CONNECTING FITTING IS  
CHARACTERISED BY BEING  
COMPLETELY RETRACTABLE  
ONCE INSTALLED.





## Giunzioni Connecting fittings

# Serie GN400 GN400 Series

LA GIUNZIONE DELLA SERIE GN400 E' CARATTERIZZATA DALL'ESSERE COMPLETAMENTE A SCOMPARSA UNA VOLTA ASSEMBLATA.

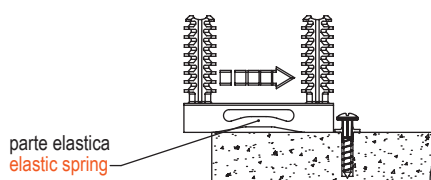
FIGURA A: LA PARTICOLARE FORMA INDICATA NELLA FIGURA A GENERA DURANTE L'ASSEMBLAGGIO UNA FORZA DI TRAZIONE TRA RIPIANO E IL MONTANTE. FIGURA B-C: MOSTRANO LE DUE MODALITA' DI ASSEMBLAGGIO DELLA GN400. LA PRIMA CON UN MOVIMENTO ORIZZONTALE. LA SECONDA CON DUE MOVIMENTI, VERTICALE E ORIZZONTALE.

THE GN400 SERIES CONNECTING FITTING IS CHARACTERISED BY BEING COMPLETELY RETRACTABLE ONCE INSTALLED.

FIGURE A: THE SPECIAL SHAPE INDICATED IN FIGURE A GENERATES A TRACTION FORCE BETWEEN THE SHELF AND THE UPRIGHT WHEN ASSEMBLING.

FIGURES B-C: SHOW THE TWO ASSEMBLY METHODS OF THE GN400. THE FIRST WITH A HORIZONTAL MOVEMENT. THE SECOND WITH TWO MOVEMENTS, VERTICAL AND HORIZONTAL.

figura: A  
drawing: A



F=50N  
forza esercitata dalla parte elastica  
elastic spring force

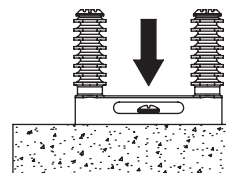


figura: B  
drawing: B

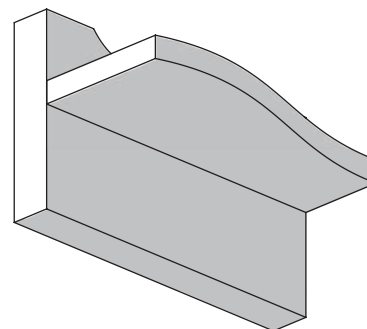
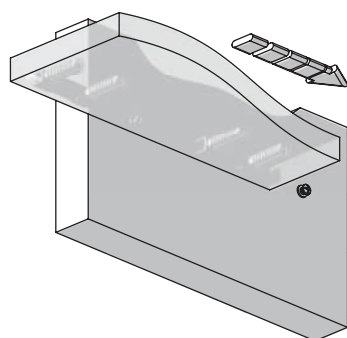
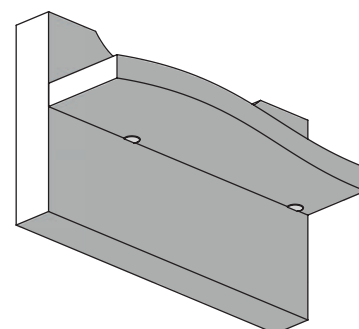
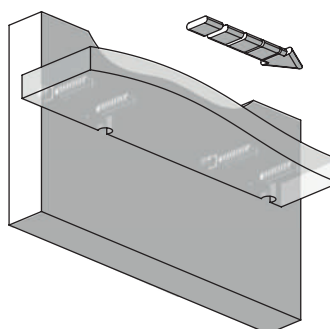
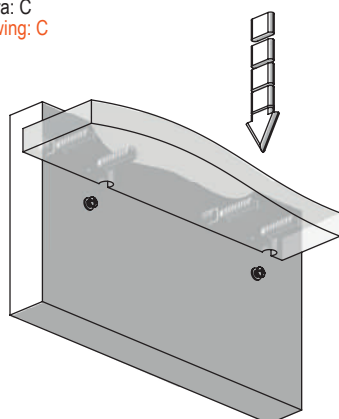


figura: C  
drawing: C

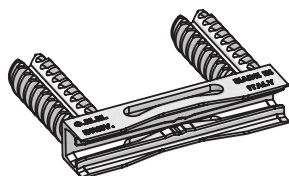


P.T400.08.55  
P.T400.08.BN  
accessori  
accessories

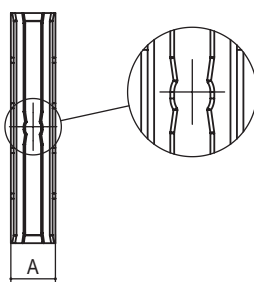
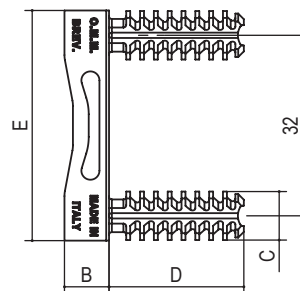


Test Report 178725/1 - 141235

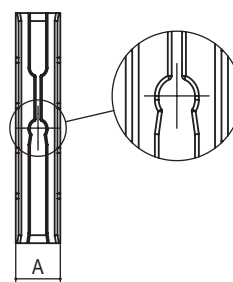
# Reggi piano invisibile tipo GN401- 402 - 411- 412 per assemblaggio in orizzontale Invisible shelf support GN401- 402 - 411- 412 type for horizontal assembly



nylon grigio  
gray nylon



giunzione GN401 - GN411 con asola passante  
shelf support GN401 - GN411 through slot



giunzione GN402 - GN412 con fermo  
shelf support GN402 - GN412 with stop

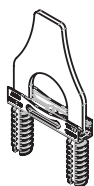
ACCESSORI  
ACCESSORY



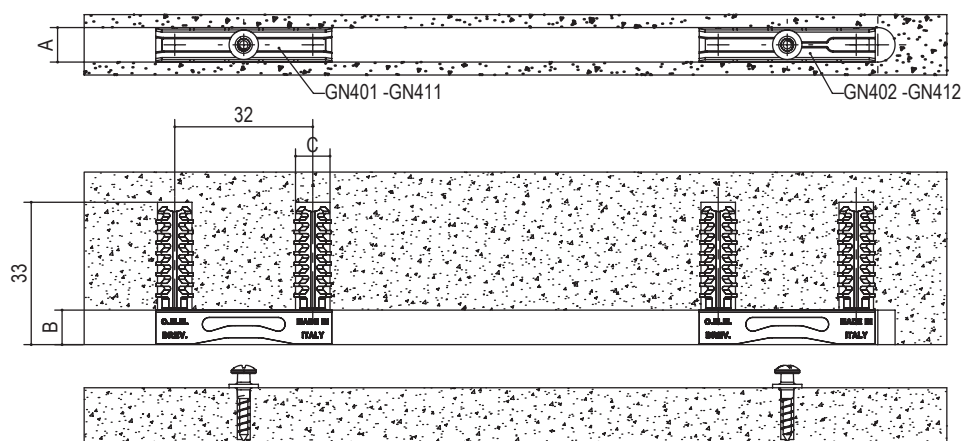
TAPPO SFACCETATO  
PER FORO Ø 8mm.  
FACETED CAP FOR  
8mm HOLE.  
Cod. P.T.400.08



BUSOLE A RICHIESTA  
SPECIFICARE DIMENSIONI  
E TIPO.  
BUSHINGS ON REQUEST  
SPECIFY SIZE AND TYPE.



DIMA MONTAGGIO  
MANUALE  
MANUAL MONTAGE  
TEMPLATE  
P.UT.GN400.02



tipo type	misura measure	A	B	C	D	E	finitura finishing	kg / 1000pz	pcs/ pack	pcs/ box
P.GN401.	8x8.	8		8	24	41	55 grigio grey	3,6	50	1000
P.GN402.	8x8.		8							
P.GN411.	12x8.	12		12	28	45		4,6	50	1000
P.GN412.	12x8.		12							

es./e.g.: P.GN401.8x8.55

www.omm.name  
omm@omm.name  
tel. 0362.622377



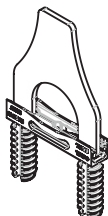
THE GN400 SERIES CONNECTING FITTING IS CHARACTERISED BY BEING COMPLETELY RETRACTABLE ONCE INSTALLED. EQUIPPED WITH HOLES FOR BEFORE BEING SCREWED, THIS PERMITS TO BE USED ALSO ON VERTICAL DIVIDERS.

ACCESSORI  
ACCESSORY



BUSSELE A RICHIESTA  
SPECIFICARE  
DIMENSIONI E TIPO.

BUSHINGS ON REQUEST  
SPECIFY SIZE AND TYPE.

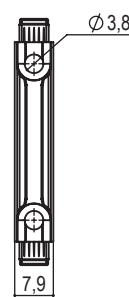
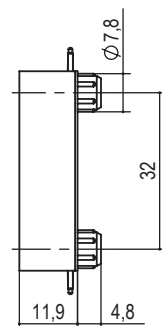
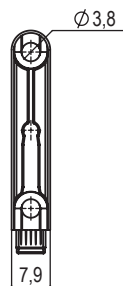
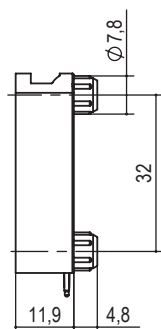
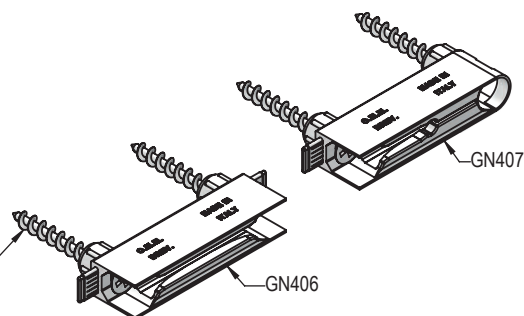


DIMA MONTAGGIO  
MANUALE  
MANUAL MONTAGE  
TEMPLATE  
P.UT.GN400.02

nylon grigio  
grey nylon

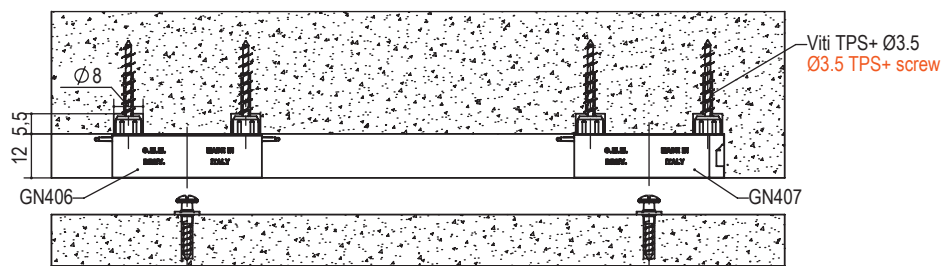
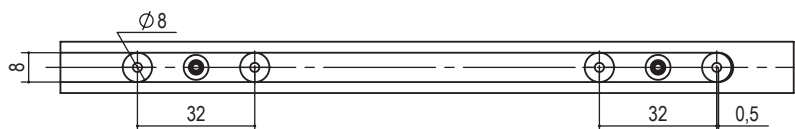
vite mordente testa  
svasata taglio croce  
Ø3.5x40

non inclusa  
screw head bite  
flared cut cross  
Ø3.5x40  
not included



giunzione GN407 con fermo  
shelf support GN407 with stop

giunzione GN406 passante  
shelf support GN406 through slot



tipo <u>type</u>	misura <u>measure</u>	finitura <u>finishing</u>	kg / 1000pz	pcs/ pack	pcs/ box
P.GN406.	8x12.	53 nero black	3,6	50	1000
P.GN407.	8x12.		4,6	50	1000

es./e.g.: P.GN406.08x12.53

www.omm.name  
omm@omm.name  
tel. 0362.622377



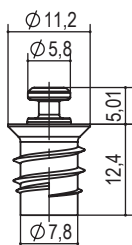
## Reggi piano invisibile tipo GN437 a scomparsa Invisible shelf support GN437 type invisible



400 N

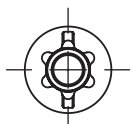
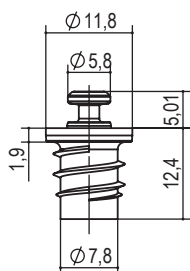


400 N



Perno con molla TS  
Pin under spring TS

torx T45  
blade+torx screwdriver  
A.GN400.TS.08.12.5.02



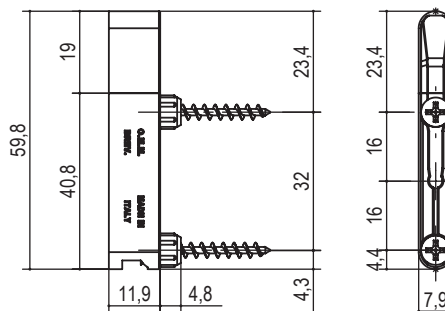
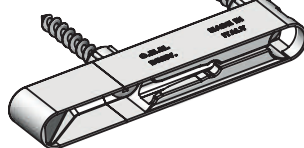
Perno con molla TC  
Pin under spring TC

torx T45  
blade+torx screwdriver  
A.GN400.TC.08.12.5.02

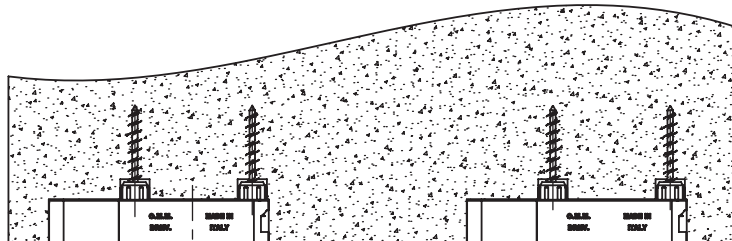
nylon grigio  
gray nylon

vite mordente testa svasata taglio croce  
Ø3.5x40 non inclusa

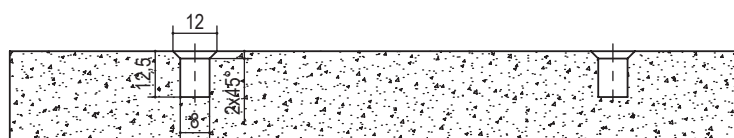
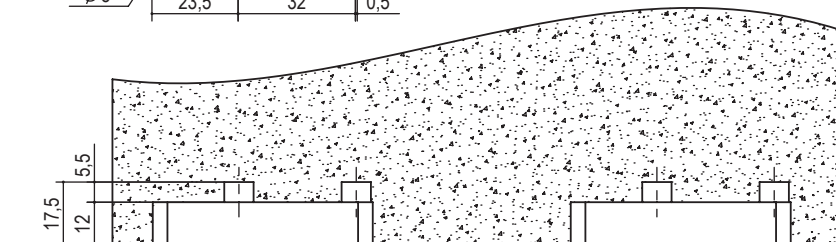
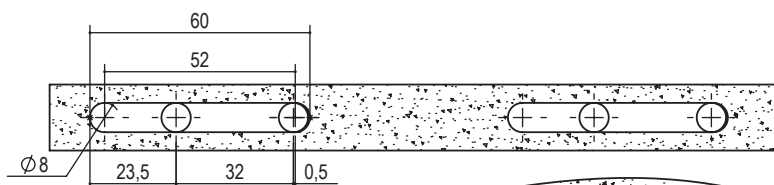
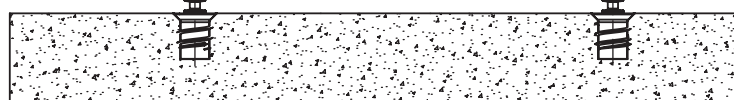
screw head bite flared cut cross  
not included



sfasamento per  
assemblaggio  
not aligned for  
assembly



direzione di  
assemblaggio  
mounting direction



tipo type	misura measure	finitura finishing	kg / 1000pz	pcs/ pack	pcs/ box
A.GN437.	8x12.	55 grigio gray	8,3	50	1000





## Giunzioni Connecting fittings

# Serie GN440 GN440 Series

GIUNZIONE DELLA SERIE GN440 E' CARATTERIZZATA DALL'ESSERE COMPLETAMENTE A SCOMPARSA UNA VOLTA ASSEMBLATA.

FIGURA A: LA PARTICOLARE FORMA INDICATA NELLA FIGURA A GENERA DURANTE L'ASSEMBLAGGIO UNA FORZA DI TRAZIONE TRA RIPIANO E IL MONTANTE.

FIGURA B: MOSTRA LA MODALITA' DI ASSEMBLAGGIO DELLA SERIE GN440.

THE GN440 SERIES CONNECTING FITTING IS CHARACTERISED BY BEING COMPLETELY RETRACTABLE ONCE INSTALLED.

FIGURE A: THE SPECIAL SHAPE INDICATED IN FIGURE A GENERATES A TRACTION FORCE BETWEEN THE SHELF AND THE UPRIGHT WHEN ASSEMBLING.

FIGURES B: SHOW THE TWO ASSEMBLY METHODS OF THE GN440.

figura : A  
drawing: A

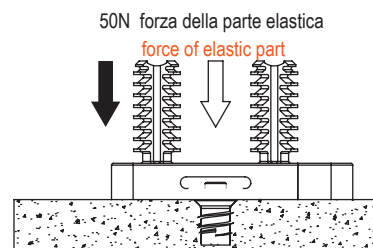
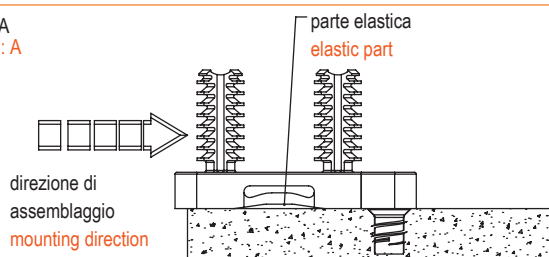
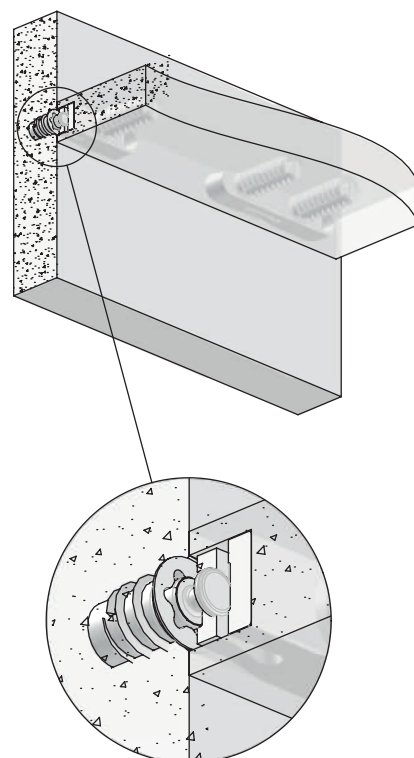
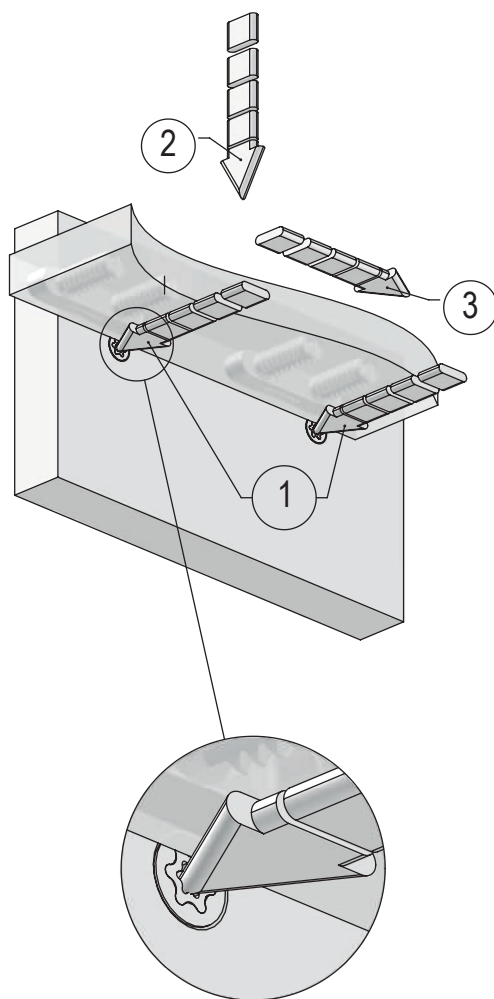


figura : B  
drawing: B







## Reggi piano invisibile tipo GN442

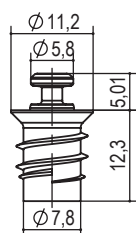
### Invisible shelf support GN442 type



400 N

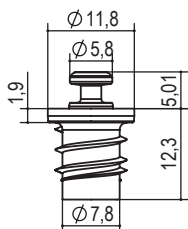
500 N

ACCESSORI  
ACCESSORY



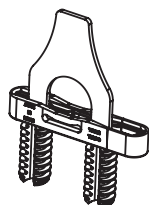
Perno con molla TS  
Pin under spring TS  
torx T45

blade+torx screwdriver  
A.GN400.TS.08.12.5.02



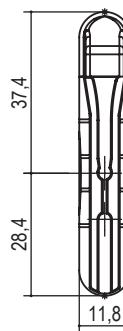
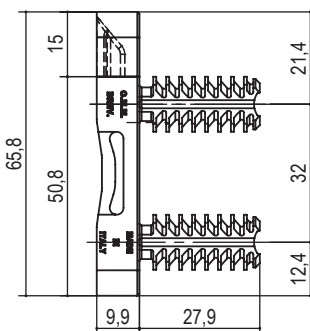
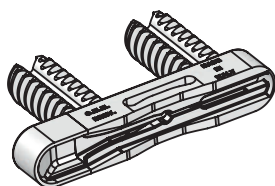
Perno con molla TC  
Pin under spring TC  
torx T45

blade+torx screwdriver  
A.GN400.TC.08.12.5.02

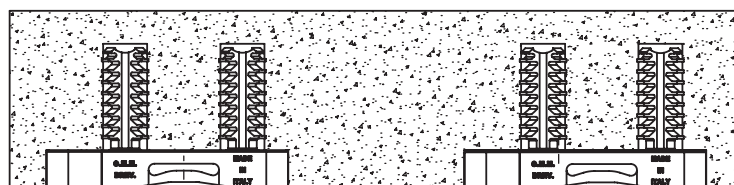


DIMA MONTAGGIO  
MANUALE  
MANUAL MONTAGE  
TEMPLATE  
P.UT.GN400.02

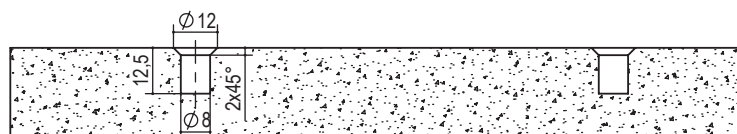
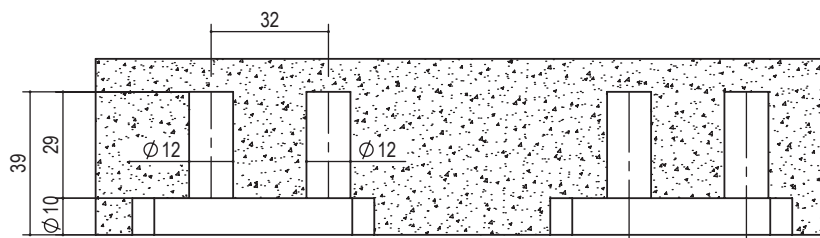
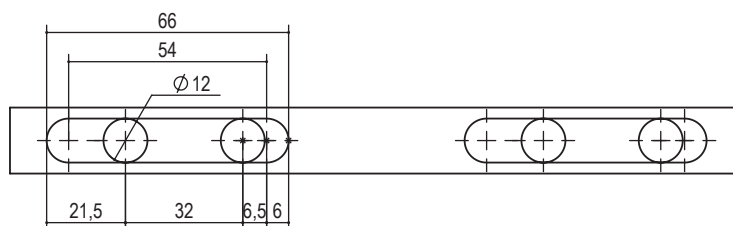
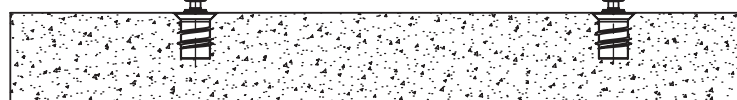
nylon grigio  
gray nylon



sfasamento per  
assemblaggio  
Not aligned for  
assembly



←  
direzione di  
assemblaggio  
mounting direction



tipo type	misura measure	finitura finishing	kg / 1000pz	pcs/ pack	pcs/ box
A.GN442.	12x10.	55 grigio gray	8,3	50	1000

es./e.g.: A.GN442.12x10.55

www.omm.name  
omm@omm.name  
tel. 0362.622377



## Giunzioni Connecting fittings

# Serie GN450 GN450 Series

GIUNZIONE DELLA SERIE GN450 E' CARATTERIZZATA DALL'ESSERE COMPLETAMENTE A SCOMPARSA UNA VOLTA MONTATA.

FIGURA A: LA PARTICOLARE FORMA INDICATA NELLA FIGURA A GENERA DURANTE L'ASSEMBLAGGIO UNA FORZA DI TRAZIONE TRA RIPIANO E IL MONTANTE.

FIGURA B-C: MOSTRA LA MODALITA' DI ASSEMBLAGGIO DELLA SERIE GN450 SIA CON SCORRIMENTO ORIZZONTALE DEL PIANO (FIG. B) SIA CON SCORRIMENTO VERTICALE DEL PIANO FIG. C. SI FA NOTARE CHE PER ESEGUIRE I MONTAGGI E' NECESSARIO COMPRIMERE IL PERNO A SCOMPARSA PER PERMETTERE IL PASSAGGIO DEL RIPIANO.

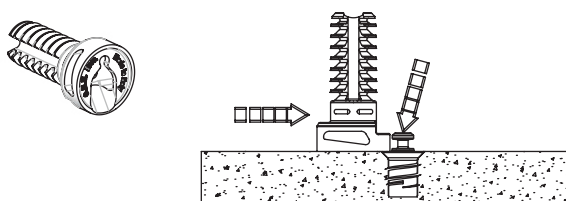
THE GN450 SERIES CONNECTING FITTING IS CHARACTERISED BY BEING COMPLETELY RETRACTABLE ONCE INSTALLED.

FIGURE A: THE SPECIAL SHAPE INDICATED IN FIGURE A GENERATES A TRACTION FORCE BETWEEN THE SHELF AND THE UPRIGHT WHEN ASSEMBLING.

FIGURES B: SHOW THE TWO ASSEMBLY METHODS OF THE GN450.

FIGURE C: SHOWING THE RETRACTABLE PIN TO BE COMPRESSED TO ALLOW THE STEP UP TO THE SHELF FINAL PLACEMENT.

figura : A Assemblaggio  
drawing: A Assembly



50N

Forza esercitata  
dalla parte elastica  
Force from the  
elastic part

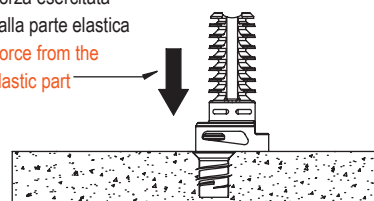


figura : B Assemblaggio Orizzontale  
drawing: B Horizontal Assembly

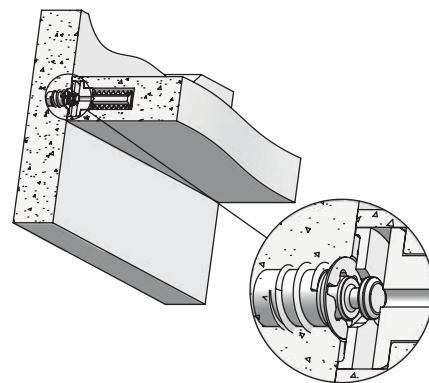
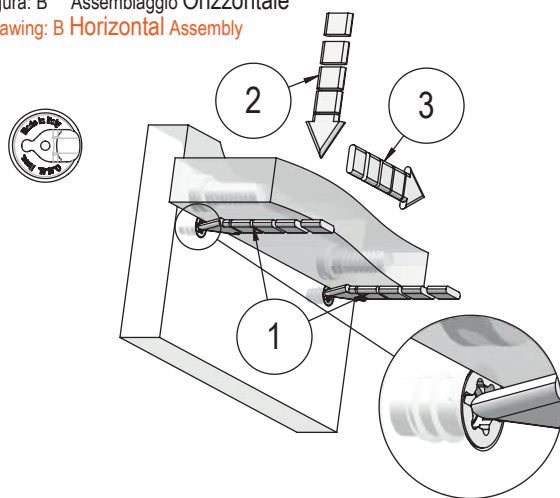
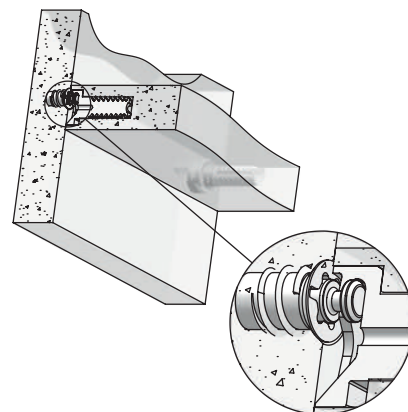
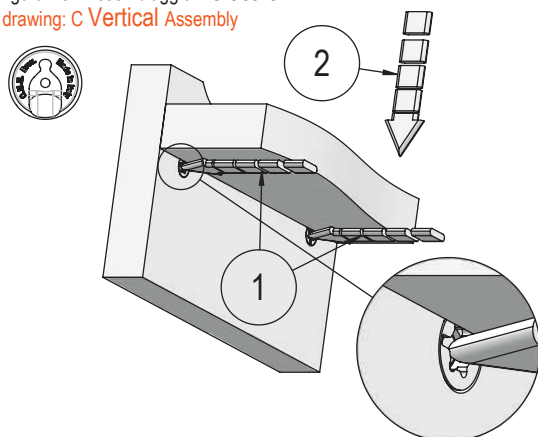
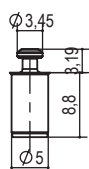


figura : C Assemblaggio Verticale  
drawing: C Vertical Assembly

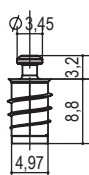




## Giunzione tipo GN452.12 a scomparsa Invisible shelf support GN452.12 type invisible



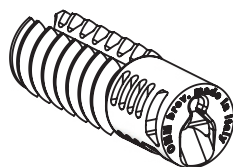
Perno a scomparsa ST  
Hidden pin ST  
A.GN400.ST.05.09.02



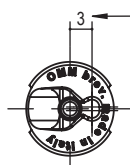
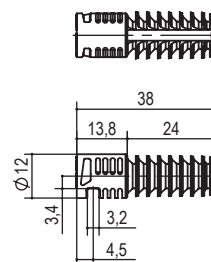
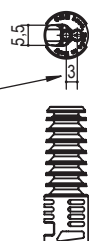
Perno a scomparsa ST.EU  
Hidden pin ST.EU  
Chiave torx T25  
torx screwdriver T25  
A.GN400.STEU.05.09.02



nylon grigio  
gray nylon

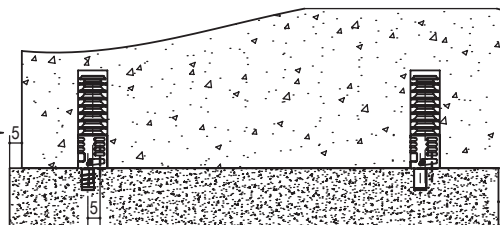
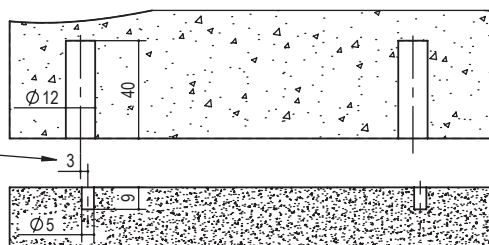


sfasamento  
foratura perno  
hole phase  
displacement

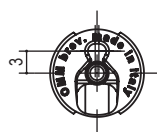


Assemblaggio Orizzontale  
Horizontal Assembly

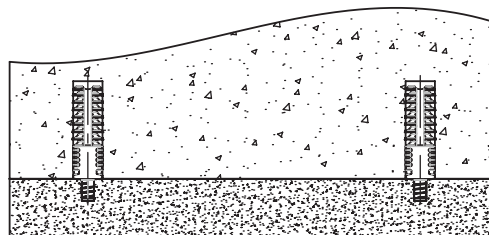
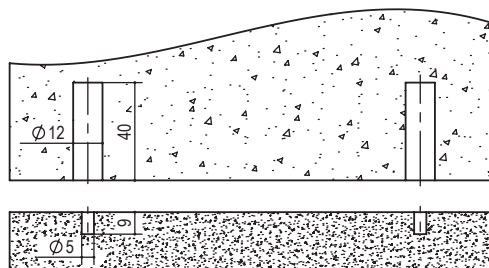
sfasamento  
per assemblaggio  
not aligned  
for assembly



direzione di  
assemblaggio  
assembling  
direction



Assemblaggio Verticale  
Vertical Assembly



tipo type	misura measure	finitura finishing	kg / 1000pz	pcs/ pack	pcs/ box
P.GN452.	12.	55 grigio gray	6	50	1000



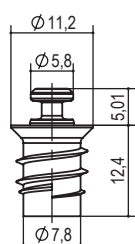
## Giunzione tipo GN452.20 a scomparsa Invisible shelf support GN452.20 type invisible



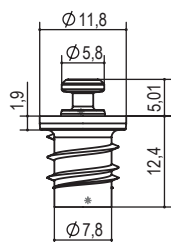
400 N



600 N



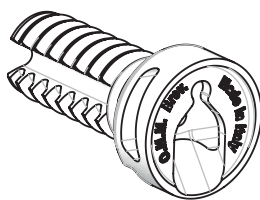
Perno con molla TS  
Pin under spring TS  
torx T45  
blade+torx screwdriver  
A.GN400.TS.8.12.5.02



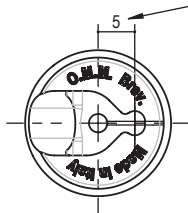
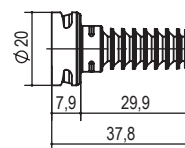
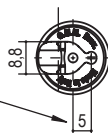
Perno con molla TC  
Pin under spring TC  
torx T45  
blade+torx screwdriver  
A.GN400.TC.8.12.5.02



nylon grigio  
gray nylon

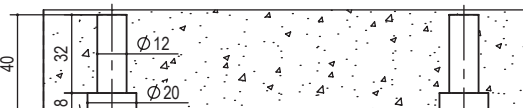


sfasamento foratura perno  
hole phase displacement

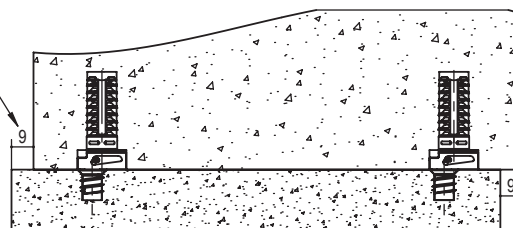


sfasamento  
foratura perno  
hole phase  
displacement

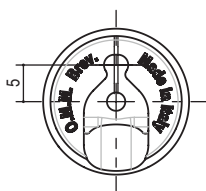
Assemblaggio Orizzontale  
Horizontal Assembly



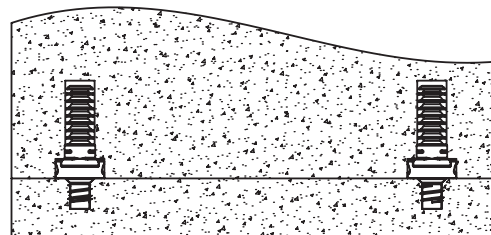
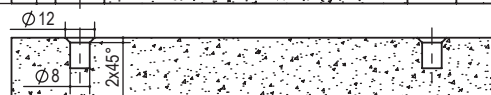
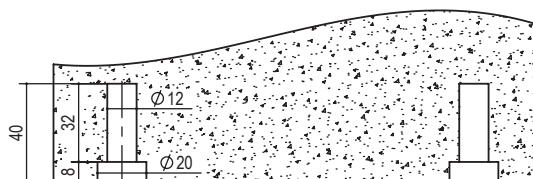
sfasamento per  
assemblaggio  
Not aligned for  
assembly



direzione di  
assemblaggio  
assembling  
direction



Assemblaggio Verticale  
Vertical Assembly



tipo type	misura measure	finitura finishing	kg / 1000pz	pcs/ pack	pcs/ box
P.GN452.	20.08.	55 grigio grey	6	50	1000



## Viti e perni GN400 Screws and dowels for GN400

ACCESSORI  
ACCESSORY



TAPPO SFACCETTATO  
PER FORO Ø 8mm.  
FACETED CAP FOR  
8mm HOLE.  
Cod. P.T.400.08

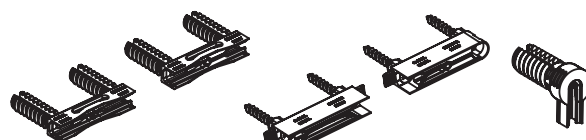
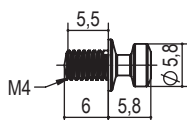


BUSSOLE A RICHIESTA  
SPECIFICARE  
DIMENSIONI E TIPO.  
BUSHINGS ON REQUEST  
SPECIFY SIZE AND TYPE.



DIMA MONTAGGIO  
MANUALE  
MANUAL MONTAGE  
TEMPLATE  
P.UT.GN400.02

P.GN400.M4X6.02

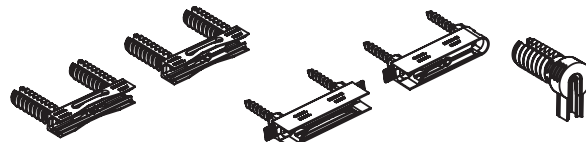
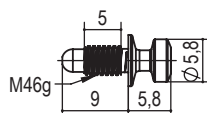


GN401-402

GN406-407

GN361

P.GN400.M4x9.PR.02  
perno per bussola espansione  
dowel for expansion housing

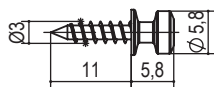


GN401-402

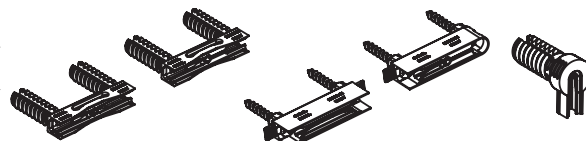
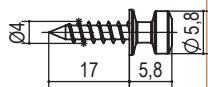
GN406-407

GN361

P.GN400.Ø3X11.02



P.GN400.Ø4X17.02

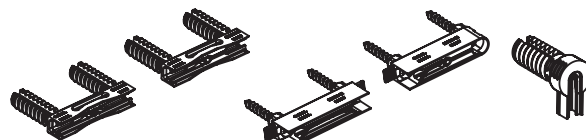
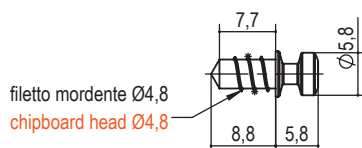


GN401-402

GN406-407

GN361

P.GN400.EU5.8.8.02  
foro - hole Ø4

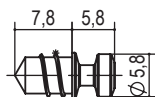


GN401-402

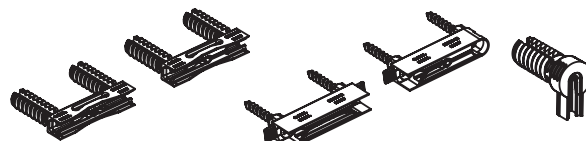
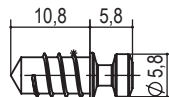
GN406-407

GN361

P.GN400.EU6.8.8.02  
foro - hole Ø5



P.GN400.EU6.11.02

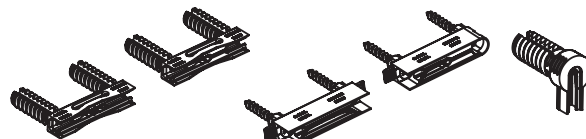
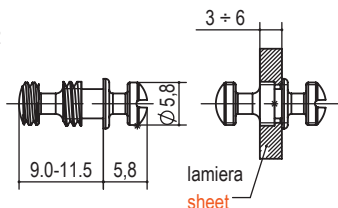


GN401-402

GN406-407

GN361

P.GN400.M6.9.02  
P.GN400.M6.11,5.02  
perno passante per lamiera  
bypass dowel for sheet

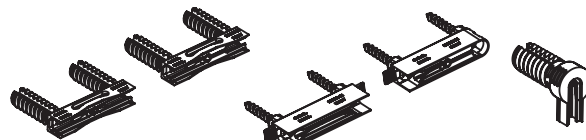
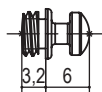


GN401-402

GN406-407

GN361

P.GN400.M6.3.02  
perno per lamiera  
bypass dowel for sheet



GN401-402

GN406-407

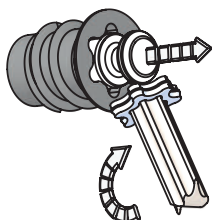
GN361



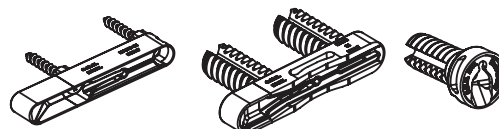
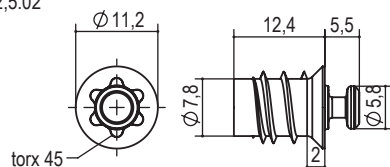
## Perni con molla e inserti GN400

### Spring dowels and inserts for GN400

TOGLIERE IL TAPPO CON  
UNA CHIAVE TORX T45 PER  
FAR USCIRE IL PERNO  
WITH A TORX 45 KEY  
FORCE THE CUP TO  
REMOVE IT



A.GN400.TS.8.12,5.02  
perno a molla  
spring dowel

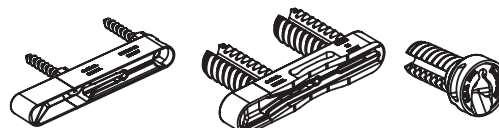
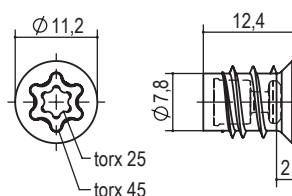


GN437

GN442

GN452.20

A.GN400.TSCT.8.12,5.02  
perno a molla con tappo  
(schema rimozione  
tappo a lato)  
spring dowel with cup  
(cap removal scheme  
at the side)

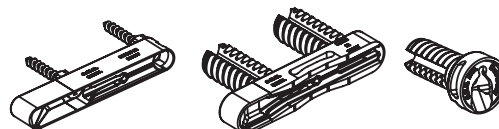
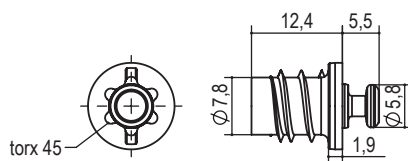


GN437

GN442

GN452.20

A.GN400.TC.8.12,5.02

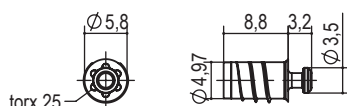


GN437

GN442

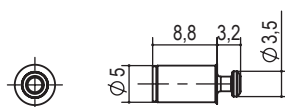
GN452.20

A.GN400.TSEU.05.09.02



GN452.12

A.GN400.TS.05.09.02



GN452.12



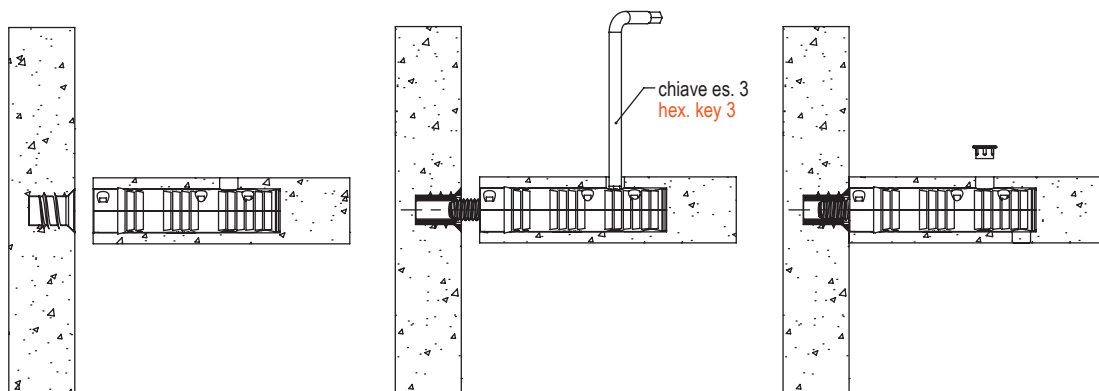
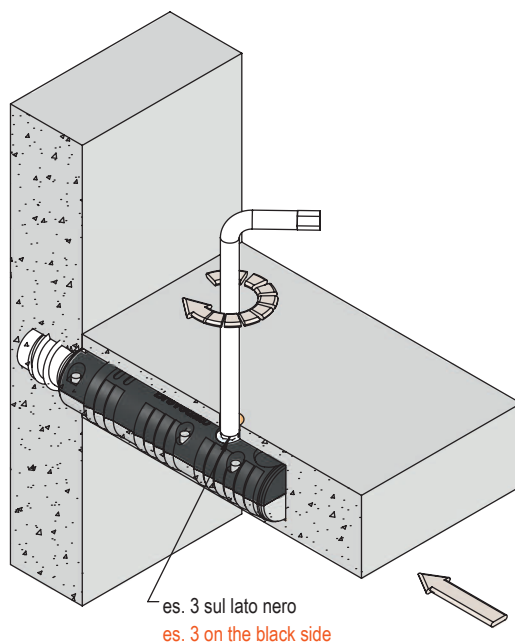
## Giunzioni Connecting fittings

# Serie GN500 GN500 Series

LA GIUNZIONE DELLA SERIE GN500 E' CARATTERIZZATA, PRIMA DELL'ASSEMBLAGGIO, DALL' AVERE IL SISTEMA DI UNIONE COMPLETAMENTE A SCOMPARSA.

INDICATA PER ASSEMBLAGGI IN LUCE STRUTTURALI. RUOTANDO LA CHIAVE ES. 3 SI HA L'USCITA DEL PERNO M6 ED IL RELATIVO FISSAGGIO TRA FIANCO E RIPIANO.

GN500 SERIES: CONNECTING FITTING CHARACTERIZED BY HAVING, BEFORE ASSEMBLY, A FULLY RETRACTABLE CONNECTION SYSTEM. INDICATED FOR STRUCTURAL IN LIGHT ASSEMBLY. SAFE FIXING SIDE-SHELF: BY TURNING THE KEY N.3 YOU'LL HAVE THE OUTPUT OF THE M6 PIN.







www.omm.name  
omm@omm.name  
tel. 0362.622377





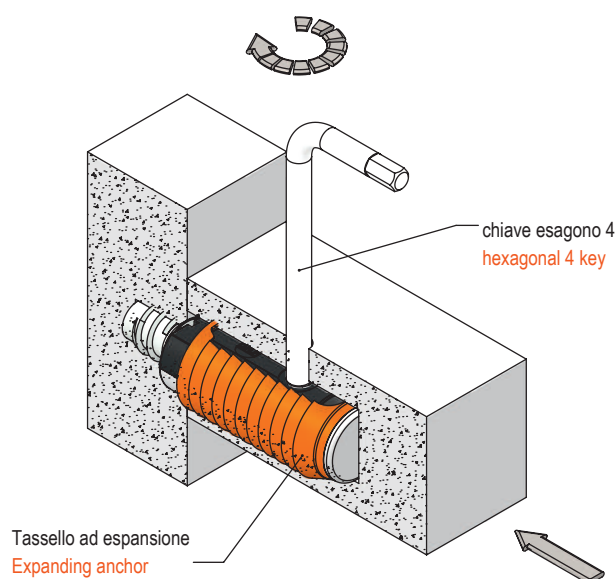
## Giunzioni Connecting fittings

# Serie GN510 GN510 Series

LA GIUNZIONE DELLA SERIE GN510 E' CARATTERIZZATA, PRIMA DELL'ASSEMBLAGGIO, DALL' AVERE IL SISTEMA DI UNIONE A SCOMPARSA. L'UNICA PARTE VISIBILE E' UN FORO Ø5 PER LA REGOLAZIONE.

INDICATA PER ASSEMBLAGGI IN LUCE STRUTTURALI. RUOTANDO LA CHIAVE ES. 4 SI HA L'USCITA DEL PERNO M6 ED IL RELATIVO FISSAGGIO TRA FIANCO E RIPIANO.

GN500 SERIES: CONNECTING FITTING CHARACTERIZED BY HAVING, BEFORE ASSEMBLY, A FULLY RETRACTABLE CONNECTION SYSTEM. INDICATED FOR STRUCTURAL IN LIGHT ASSEMBLY. SAFE FIXING SIDE-SHELF: BY TURNING THE HEXAGONAL KEY YOU'LL HAVE THE OUTPUT OF THE M6 PIN.



- Elevata tenuta in trazione superiore a 1'000 N con sfilamento pari a 0 mm
- Elevata resistenza allo sforzo di taglio 1'500 N
- Inserimento rapido unidirezionale
- Adatto per montaggi in nicchia

- High hold to extract 1000 N with 0 mm of movement
- High resistance to cutting effort 1500N
- Unidirectional fast installation
- For niche installations



## Giunzioni Connecting fittings

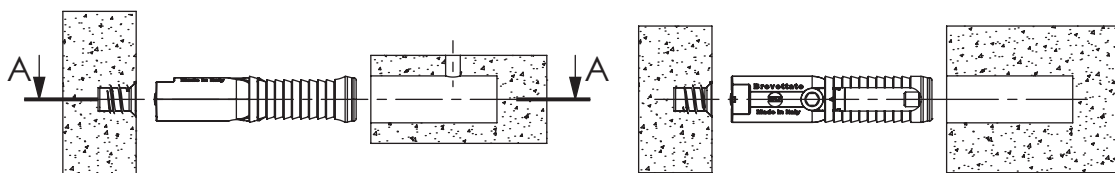
# Funzionamento Serie GN510 Operation GN510 Series

LA GIUNZIONE DELLA SERIE GN510 E' CARATTERIZZATA, DALL' AVERE IL SISTEMA DI UNIONE A SCOMPARSA, L'UNICA PARTE VISIBILE E' UN FORO Ø5 PER LA REGOLAZIONE.

INDICATA PER ASSEMBLAGGI IN LUCE STRUTTURALI. RUOTANDO LA CHIAVE ES. 4 SI HA L'USCITA DEL PERNO M6 ED IL RELATIVO FISSAGGIO TRA FIANCO E RIPIANO.

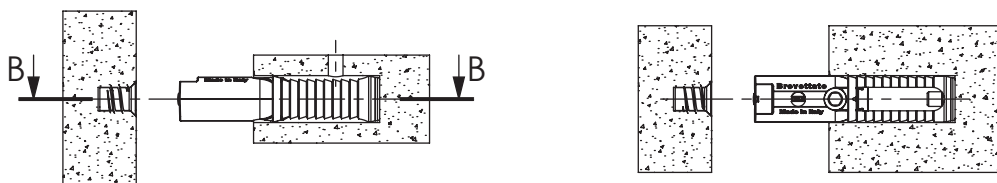
GN500 SERIES: CONNECTING FITTING CHARACTERIZED BY HAVING, BEFORE ASSEMBLY, A FULLY RETRACTABLE CONNECTION SYSTEM. INDICATED FOR STRUCTURAL IN LIGHT ASSEMBLY. SAFE FIXING SIDE-SHELF: BY TURNING THE HEXAGONAL KEY YOU'LL HAVE THE OUTPUT OF THE M6 PIN.

- 1- Giunzione prima di essere inserita nel foro  
Connecting fitting before to be inserted in the hole



SEZIONE A-A  
SECTION A-A

- 2- Giunzione inserita nel foro  
Junction inserted into the hole



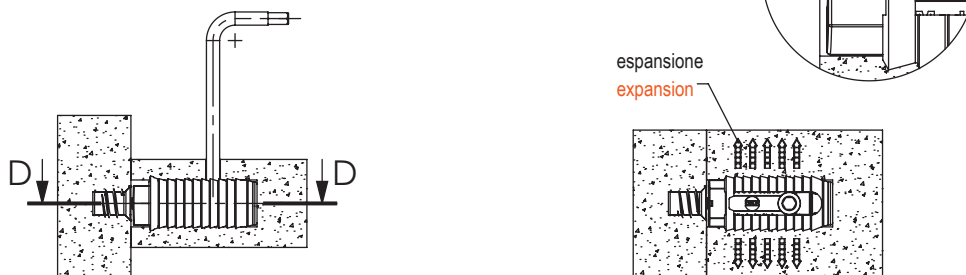
SEZIONE B-B  
SECTION B-B

- 3- Giunzione completamente assemblata a pressione nel foro  
Junction fully inserted by pressure into the hole



SEZIONE C-C  
SECTION C-C

- 4- Regolazione tramite chiave es. 4  
Regulation with hex key 4



SEZIONE D-D  
SECTION D-D



## Giunzione tipo GN516 Invisible shelf support GN516 type



1500 N



1000 N

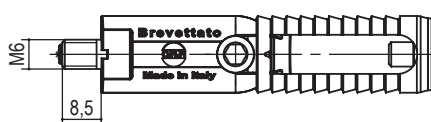
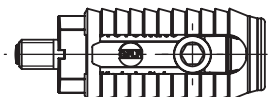
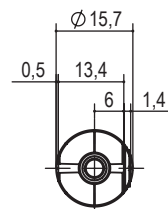
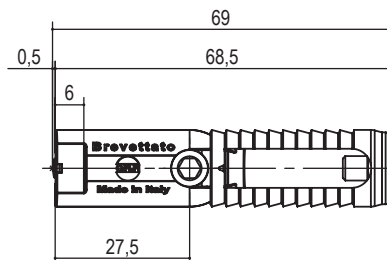
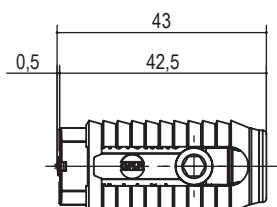
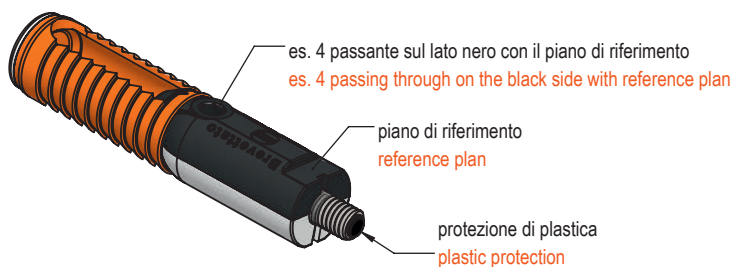
ACCESSORI  
ACCESSORY



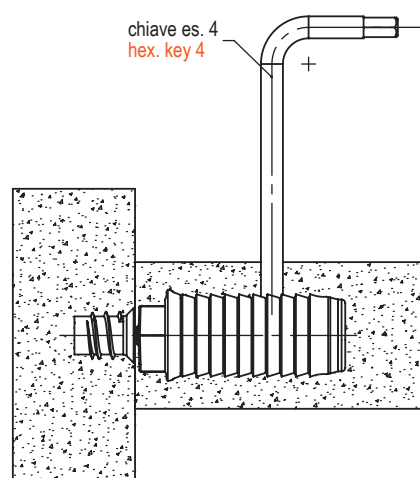
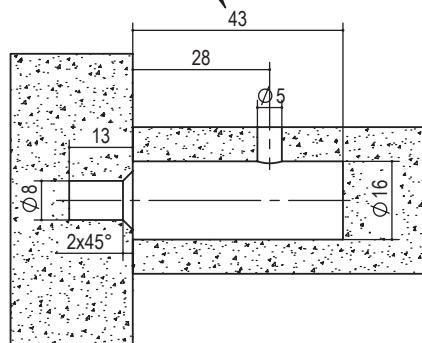
TAPPO CIECO  
BLIND CUP  
P.A458.00



BUSSOLA TORX  
T45 M6  
HOUSING TORX  
T45 M6  
P.TS.08.M6x12.5.00



rispettare quota per garantire allineamento tra  
foro Ø5 e foro regolazione es. 4  
respect this quote to guarantee the alignment  
between hole Ø5 and key hex.4



tipo type	misura measure	finitura finishing	kg / 1000pz	pcs/pack	pcs/box
A.GN516.	16x28.	00 grezzo raw	39	25	500

es./e.g.: A.GN516.16x28.00