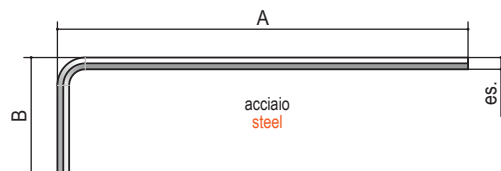




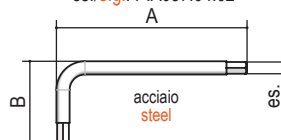
Chiavi e chiavi esagonali

Keys and exagonal keys



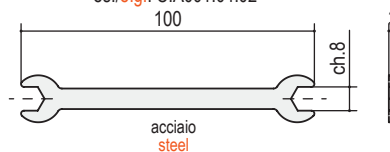
tipo type	misura measure	A	B	es.	finitura finishing	pcs/ pack	pcs/ box	kg / box
P.A087.	03.	160	40	3	02 zincato bianco white zinc	50	500	6,5
	04.	140	40	4				10,5
	05.	140	40	5				15,5
	06.	140	40	6				23

es./e.g.: P.A087.04.02



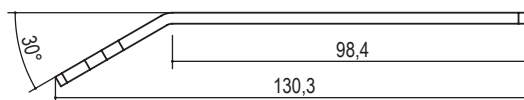
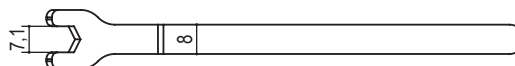
tipo type	misura measure	es.	A	B	finitura finishing	pcs/ pack	pcs/ box	kg / box
C.A001.	2.	2	54	18	02 zincato bianco white zinc	50	500	1
	2,5.	2,5	54	18				1,5
	03.	3	60	22				2
	04.	4	65	28				5
	05.	5	75	30				9
	06.	6	85	36				15,5

es./e.g.: C.A001.04.02



tipo type	misura measure	pcs/ pack	pcs/ box	kg / box
P.A009.8.	02 zincato bianco white zinc	50	500	16

es./e.g.: P.A009.8.02



tipo type	misura measure	pcs/ pack	pcs/ box	kg / box
P.CH7.PM.135.	02 zincato bianco white zinc	50	500	16

es./e.g.: P.CH7.PM.02

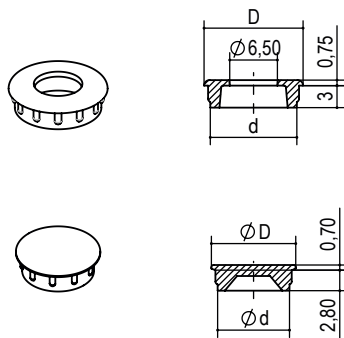


Tappi Cover cups

Tappi in zama - **die-cast cup**

finiture a richiesta in
funzione delle quantità
finishing on request
based on quantity:

05 ottonato
brass
06 bronzato
bronze
07 nichelato
nickel
53 nero
black



tipo type	misura measure	d	D	kg/1000pz	pcs/pack	pcs/box
P.A279.	08.	8	9,5	0,5	100	5000
	10.	10	11,5	1	100	5000
	12.	12	13,5	1,5	100	5000
	14.	14	15,5	1,9	100	5000
	16.	16	17,5	2,3	100	5000

es./e.g.: P.A279.12.07

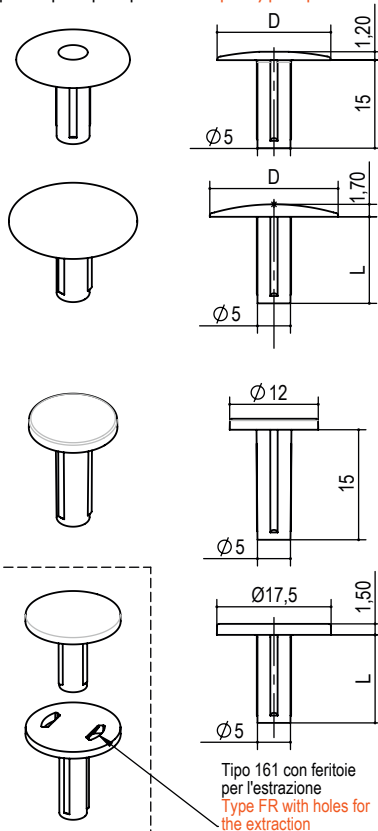
tipo type	misura measure	d	D	kg/1000pz	pcs/pack	pcs/box
P.A458.	05.	5	6,5	0,5	100	5000
	08.	8	9,5	1,2	100	5000
	10.	10	11,5	1,5	100	5000
	12.	12	13,5	2	100	5000
	14.	14	15,5	2,5	100	5000
	16.	16	17,5	3	100	5000

es./e.g.: P.A458.10.07

Tappi in polipropilene - **polypropilene cup**

finiture a richiesta in
funzione delle quantità
finishing on request
based on quantity:

00 trasparente
trasparent
BN bianco
white
53 nero
black
55 grigio
grey
BG beige
beige
MC marrone chiaro
light brown
MS marrone scuro
dark brown
PM piombo
lead



tipo type	misura measure	D	kg/1000pz	pcs/pack	pcs/box
P.A280.	15,5.15.05.	15,5	0,3	100	5000
	20.15.05.	20	0,4	100	5000

es./e.g.: P.A280.17,5.15.05.BG

tipo type	misura measure	D	L	kg/1000pz	pcs/pack
P.A300.	17,5.12.05.	17,5	12	0,3	100
	14.17.05.	14	17	0,25	100

es./e.g.: P.A300.17,5.12.05.PM

tipo type	misura measure	L	kg/1000pz	pcs/pack	pcs/box
P.A160.	12.15.05.	15,0	0,5	100	5000

es./e.g.: P.A160.12.15.05.PM

tipo type	misura measure	L	kg/1000pz	pcs/pack	pcs/box
P.A160.	17,5.15.05.	15,0	0,5	100	5000
	17,5.25.05.	25	0,7	100	5000
P.A161.	17,5.15.05.	15	0,5	100	5000

es./e.g.: P.A160.17,5.15.05.55

es./e.g.: P.A161.17,5.15.05.55

tipo type	misura measure	kg/1000pz	pcs/pack	pcs/box
P.T300.	15.05.	0,6	100	5000

es./e.g.: P.T300.15.05.55

tipo type	misura measure	kg/1000 pz	pcs/pack	pcs/box
P.T400.	08.	0,6	100	5000

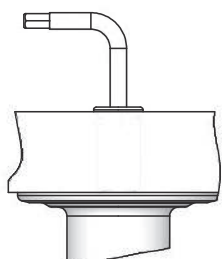
es./e.g.: P.T400.08.55



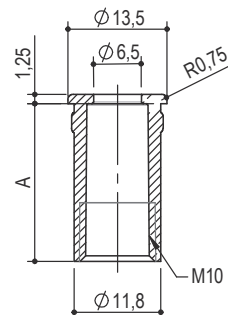
Tappo tirante Threaded cup

TAPPO TIRANTE CON TESTA,
UTILIZZATO PER ASSEMBLARE I
LIVELLATORI SOTTO I PIANI.
PERMETTE IL PASSAGGIO DELLA
CHIAVE DI REGOLAZIONE ES. 4.

THE CUP HAVE SPECIAL HOLE
ALLOW THE ADJUSTEMENT
USING ALLEN KEY.



zama
die-cast



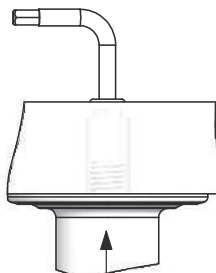
tipo <u>type</u>	misura <u>measure</u>	A	finitura <u>finishing</u>	kg / 1000pz	pcs/ pack	pcs/ box
P.A281.	018.	17,5	05 ottonato brass	6	100	2000
	022.	21,5	06 bronzato bronzed	7	100	2000
	025.	24,5	07 nichelato nickel	8	100	2000
	030.	29,5		10	100	2000

es./e.g.: P.A281.018.07

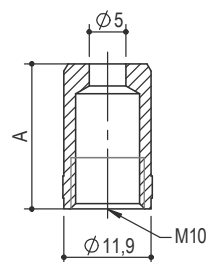
Tappo tirante a pressione Threaded knok in bush

TAPPO TIRANTE A PRESSIONE,
UTILIZZATO PER ASSEMBLARE I
LIVELLATORI.
PERMETTE DI FARE IL FORO A VISTA
CON DIAMETRO MINORE.
CONSENTE IL PASSAGGIO DELLA
CHIAVE DI REGOLAZIONE ES. 4.

THE CUP HAVE SPECIAL HOLE
ALLOW THE ADJUSTEMENT USING
ALLEN KEY.



ottone
brass



tipo <u>type</u>	misura <u>measure</u>	A	finitura <u>finishing</u>	kg / 1000pz	pcs/ pack	psc/ box
P.A288.	015.	15	00 grezzo raw	6	100	2000
	020.	20		8	100	2000
	030.	30		12	100	1000

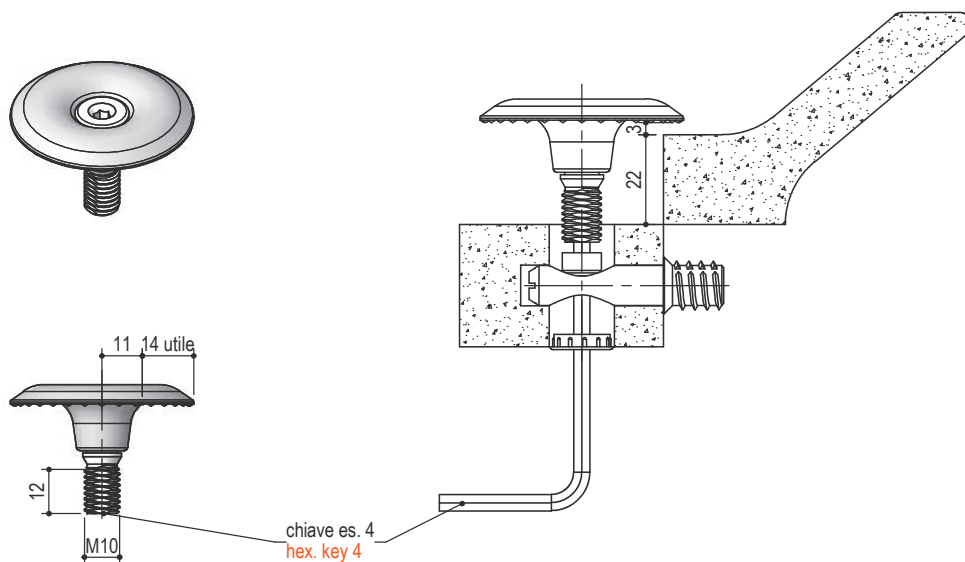
es./e.g.: P.A288.020.00



Fermo ruotante Top clogstopper

NORMALMENTE UTILIZZATO PER FERMARE LE CORNICI POSTE SUPERIORMENTE AGLI ARMADI SFRUTTANDO LA BUSSOLA DI GIUNZIONE GIÀ ESISTENTE.

NORMALLY USED TO STOP THE FRAMES PLACED ON TOP OF WARDROBES USING THE EXISTING SLEEVE JOINT.



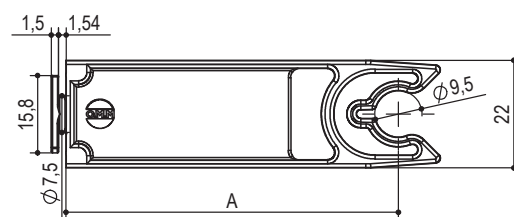
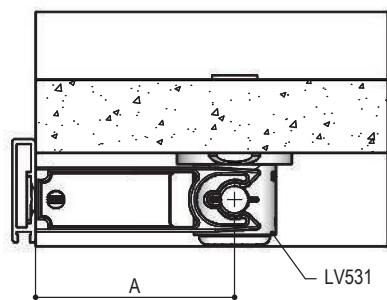
tipo type	misura measure	finitura finishing	kg / 100pz	pcs/ pack	pcs/ box
FR101.	30.	55 grigio grey	2,2	25	500

es./e.g.: FR101.30.55



Supporto per zoccolino alluminio tipo P.A061

Hook for aluminium plinth P.A061 type

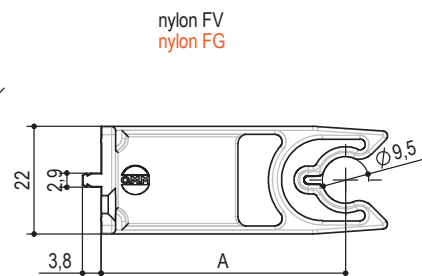
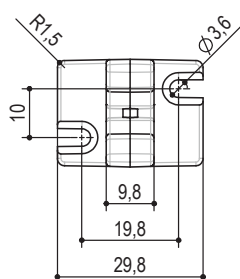
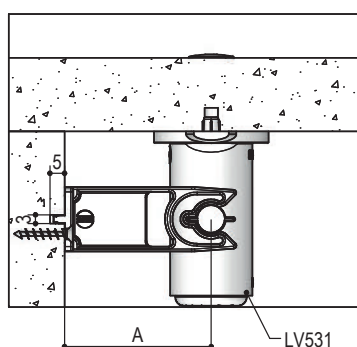


tipo type	misura measure	A	finitura finishing	kg / 1000pz	pcs/ pack	pcs/ box
P.A061.	36.	36	55 grigio grey	0,5	25	500
	68.	68		0,8	25	500

es./e.g.: P.A061.68.55

Supporto per zoccolino legno tipo P.A062

Hook for wood plinth P.A062 type



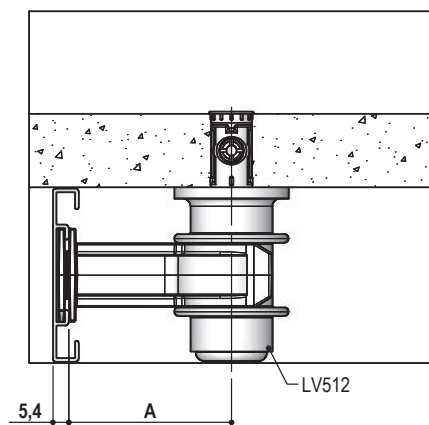
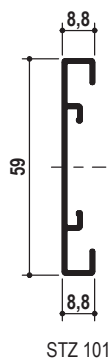
tipo type	misura measure	A	finitura finishing	kg / 1000pz	pcs/ pack	pcs/ box
P.A062.	50.	50	55 grigio grey	8,0	25	500
	55.	55		8,3	25	500

es./e.g.: P.A062.50.55



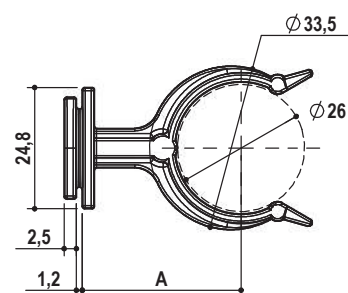
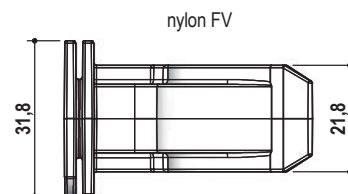
Supporto per zoccolino alluminio tipo P.A378

Hook for aluminium plinth P.A378 type



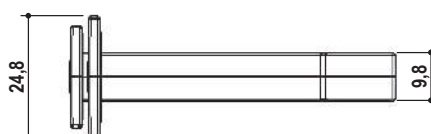
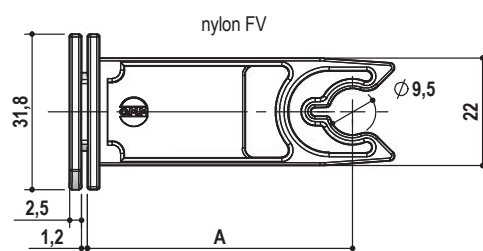
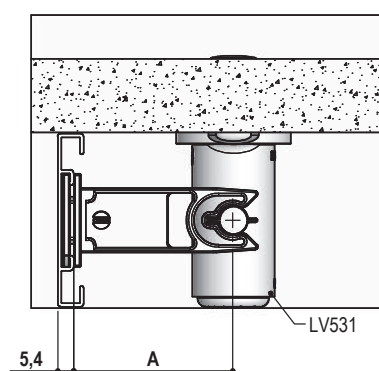
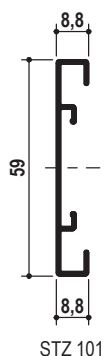
tipo type	misura measure	A	finitura finishing	kg / 1000pz	pcs/ pack	pcs/ box
P.A378.	32,5.	32,5	55 grey	1,4	25	500
	54,5.	54,5		1,9	25	500

es./e.g.: P.A378.54,5.55



Supporto per zoccolino alluminio tipo P.A398

Hook for aluminium plinth P.A398 type



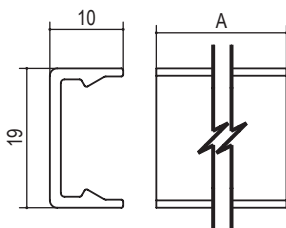
tipo type	misura measure	A	finitura finishing	kg / 1000pz	pcs/p ack	pcs/b ox
P.A398.	54,5.	54,5	55 grigio grey	1,1	25	500

es./e.g.: P.A398.54,5.55

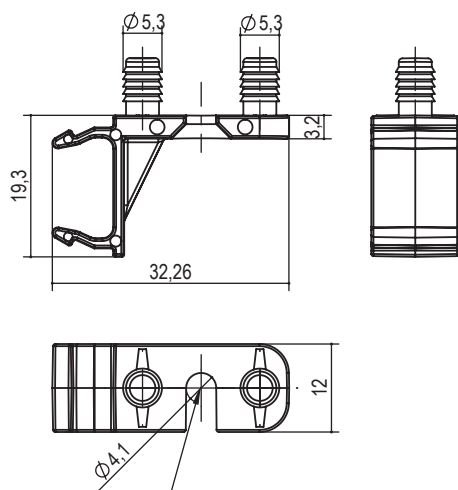


Supporto per zoccolino alluminio tipo P.A549

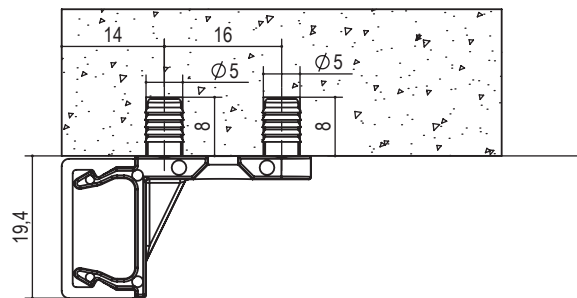
Hook for aluminium plinth P.A549 type



alluminio
aluminum
STZ121.A.00



possibilità di aggiungere vite
possibility to add screw



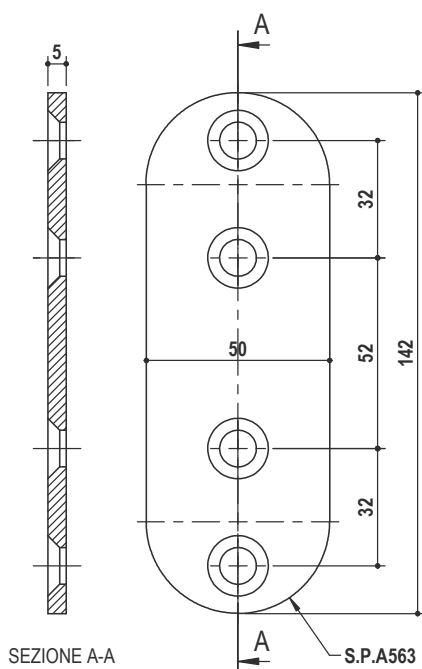
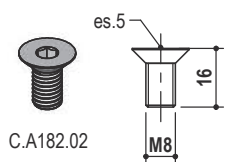
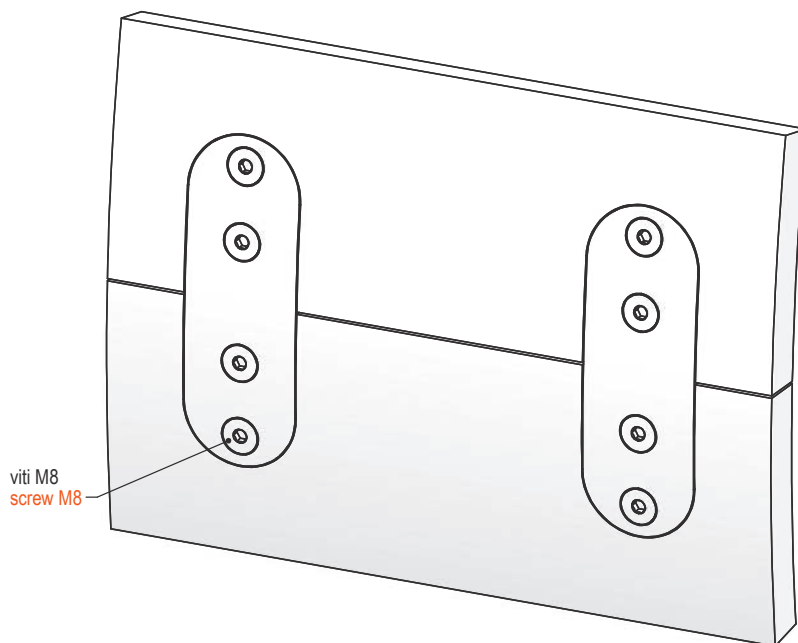
tipo type	misura measure	A	finitura finishing	kg / 1000pz	pcs/ pack	pcs/ box
P.A549.	16.	16	55 grigio grey	0,5	25	500

es./e.g.: P.A549.16.55

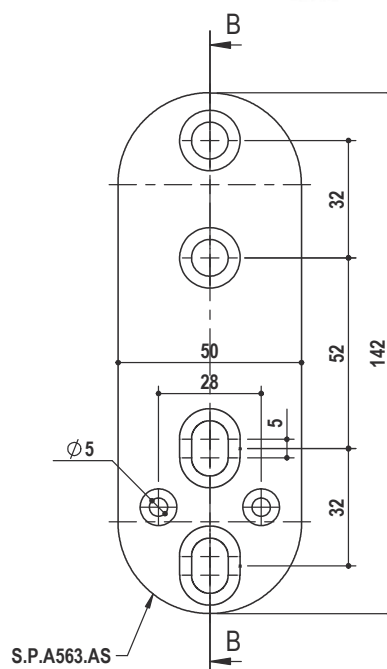


Piastra giunzione tipo S.P.A563

Joint plate S.P.A563 type



SEZIONE A-A



SEZIONE B-B

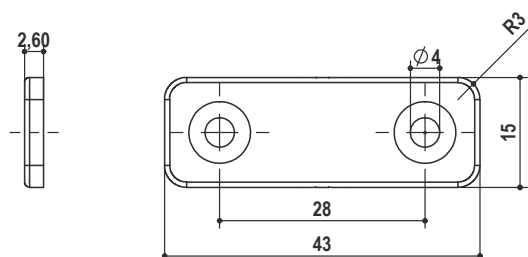
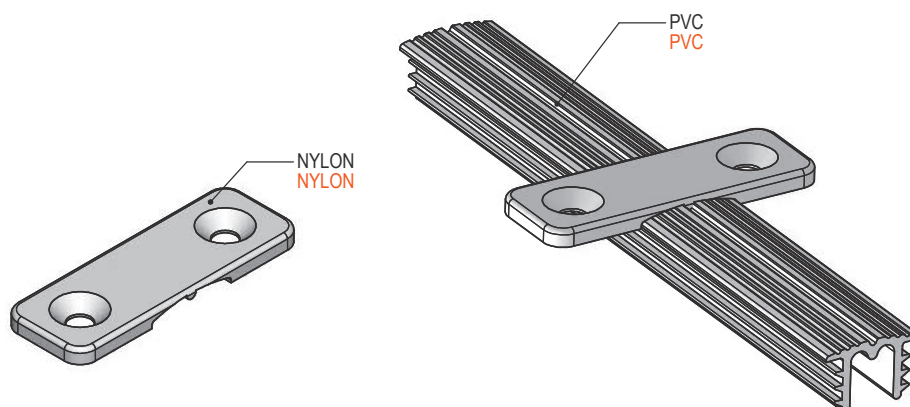
tipo type	finitura finish	box	kg / box
S.P.A563.	55 grigio grey	100	23,2
S.P.A563.AS			

es./e.g.: S.P.A563.55



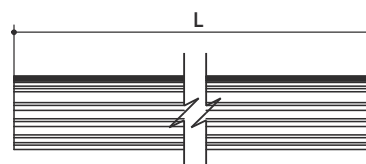
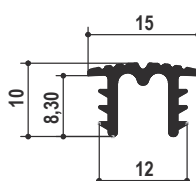
Cavallotto e copertura per tenditori ad incasso

Staple cover for recessed wardrobe adjuster



tipo <u>type</u>	finitura <u>finishing</u>	kg / 1000pz	pcs/ pack	pcs/ box
P.A018.	55 grigio grey	1,5	100	2000

es./e.g.: P.A018.55



tipo <u>type</u>	misura <u>measure</u>	finitura <u>finishing</u>	kg / m	pcs/ pack
P.A190.	L	55 grigio grey	0,071	50

es./e.g.: P.A190.L.55