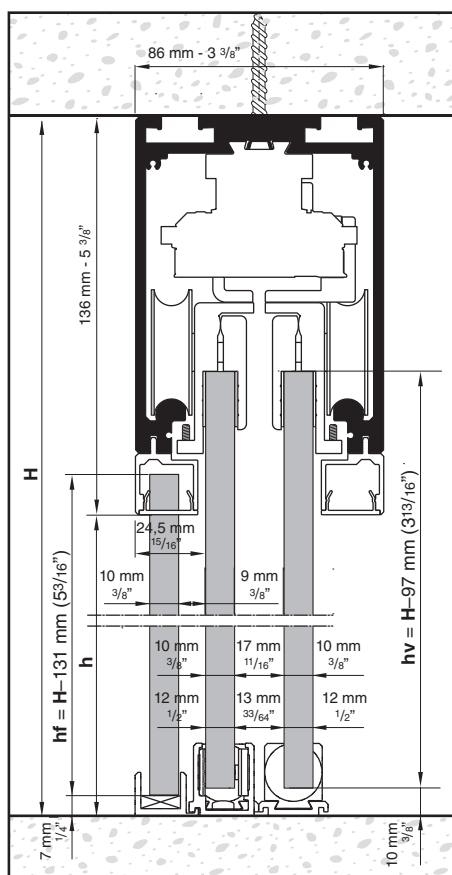
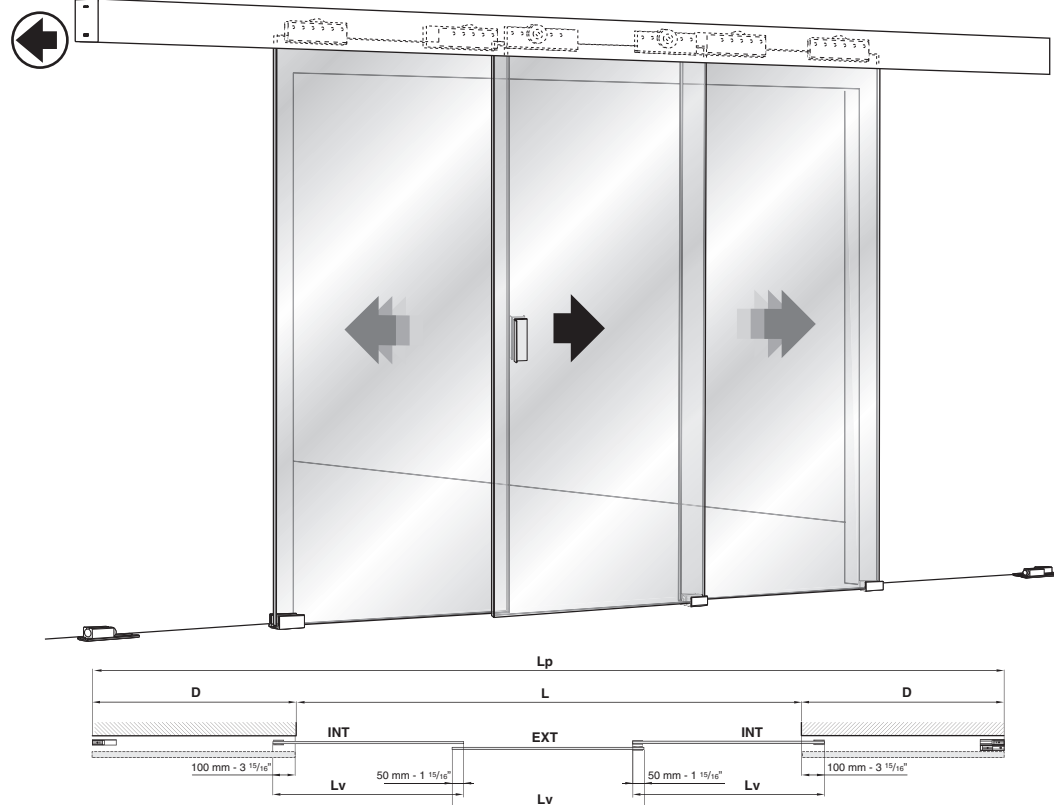
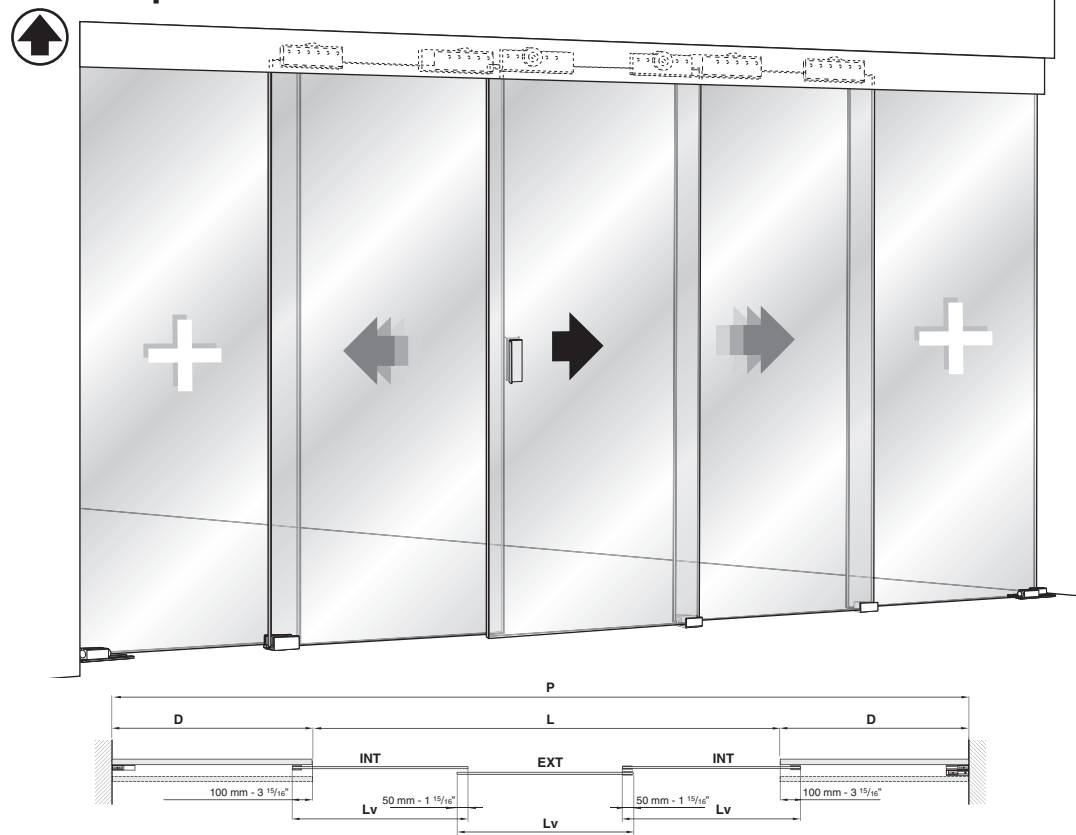


Instal. lateral

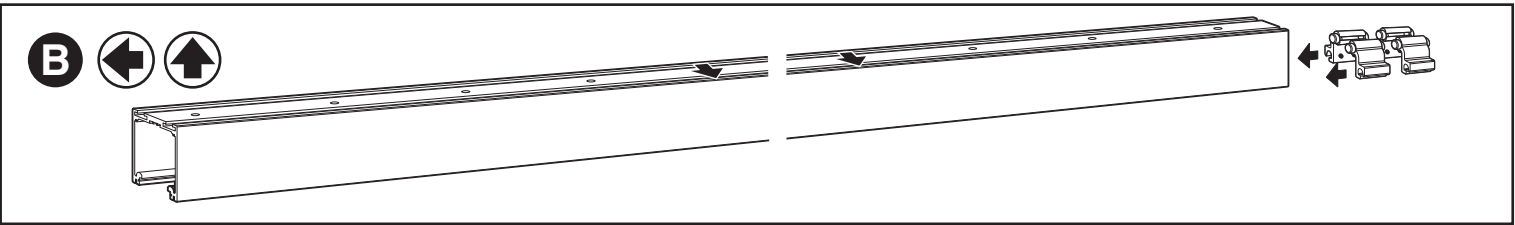
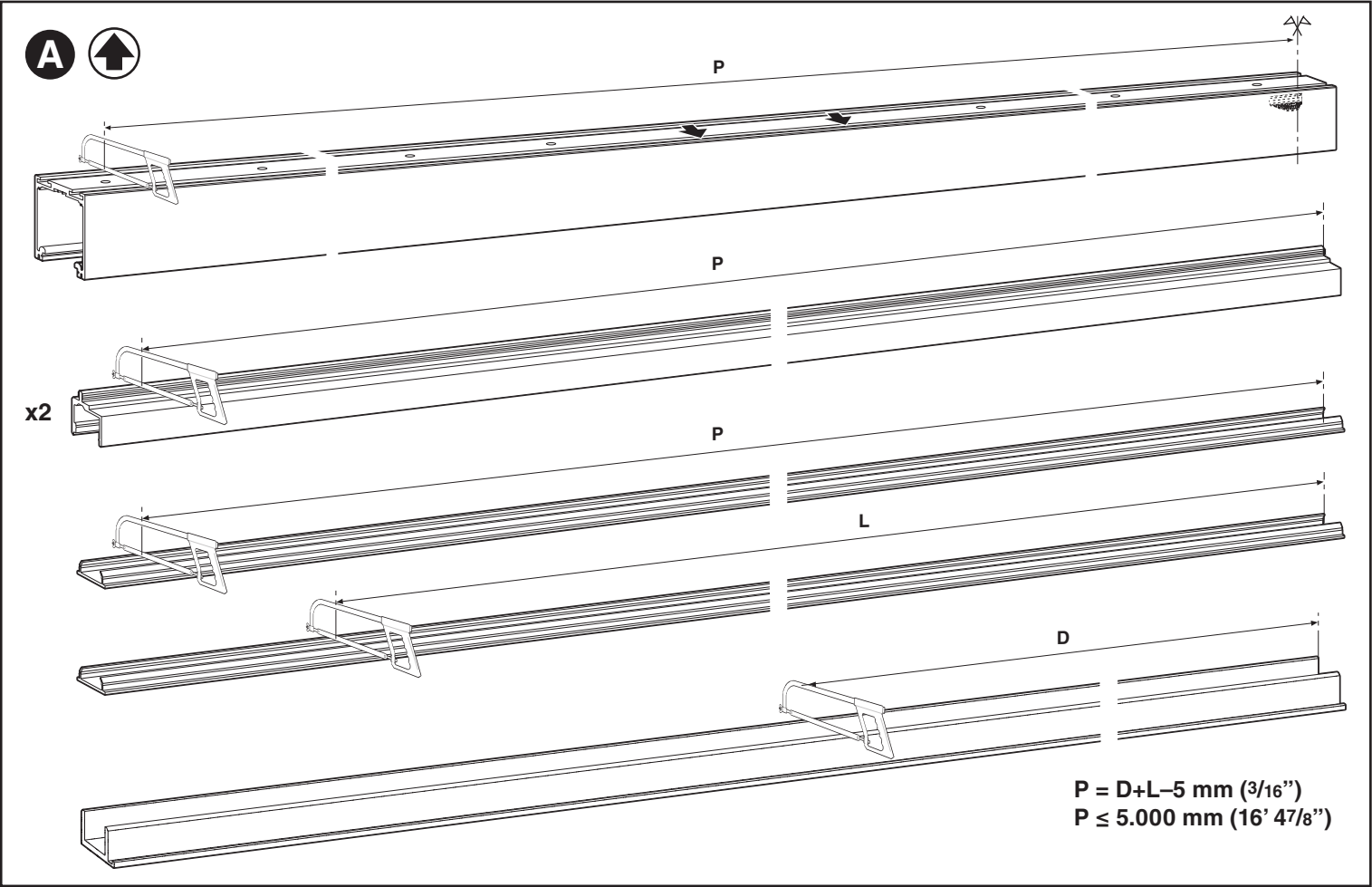
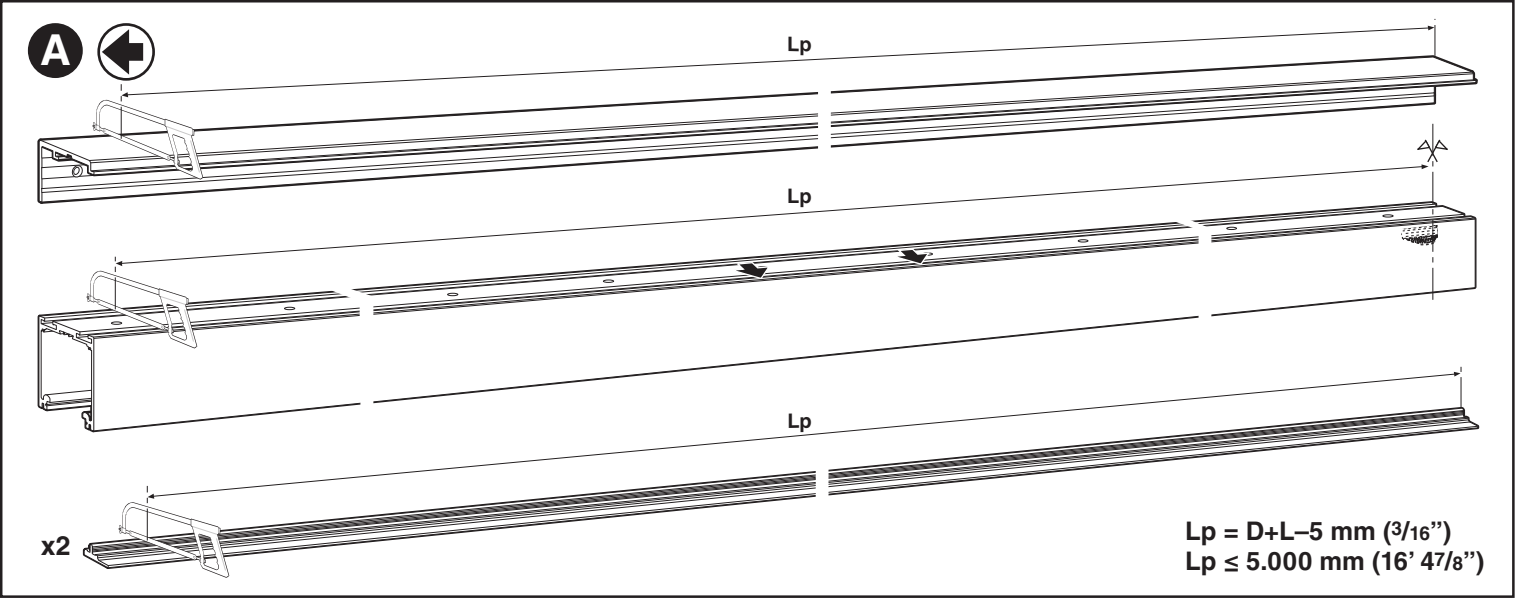


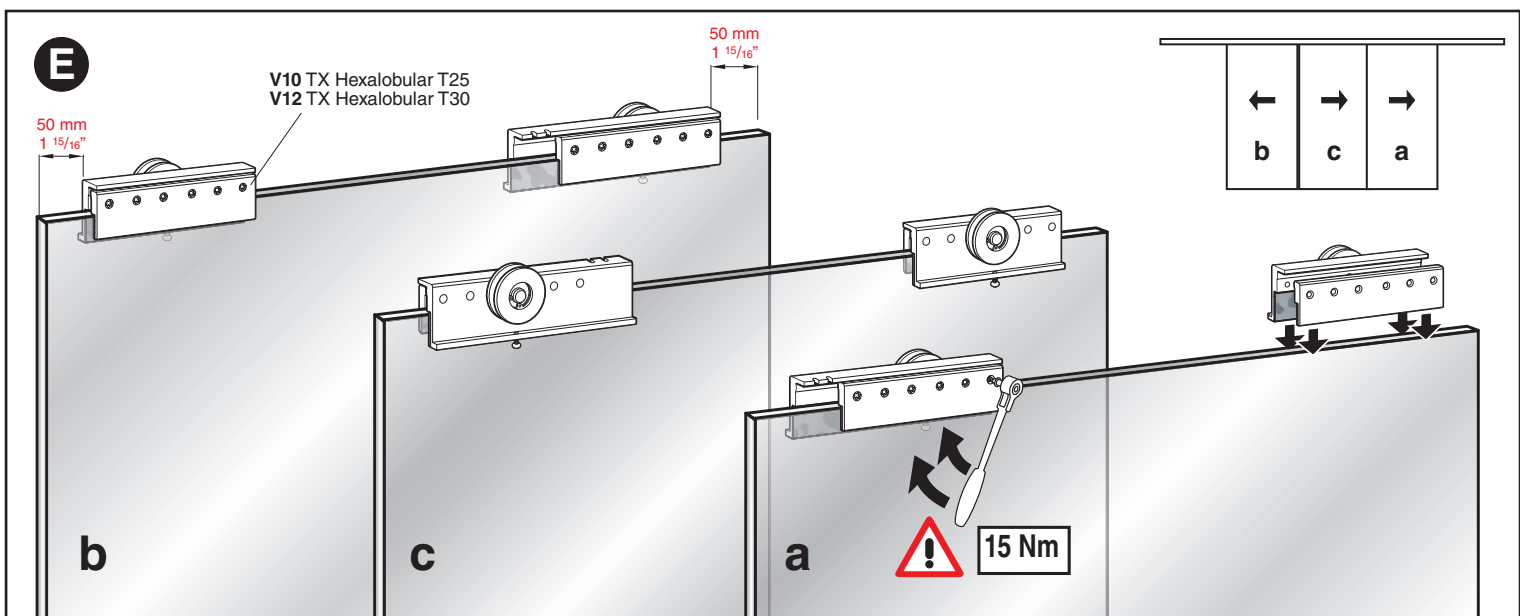
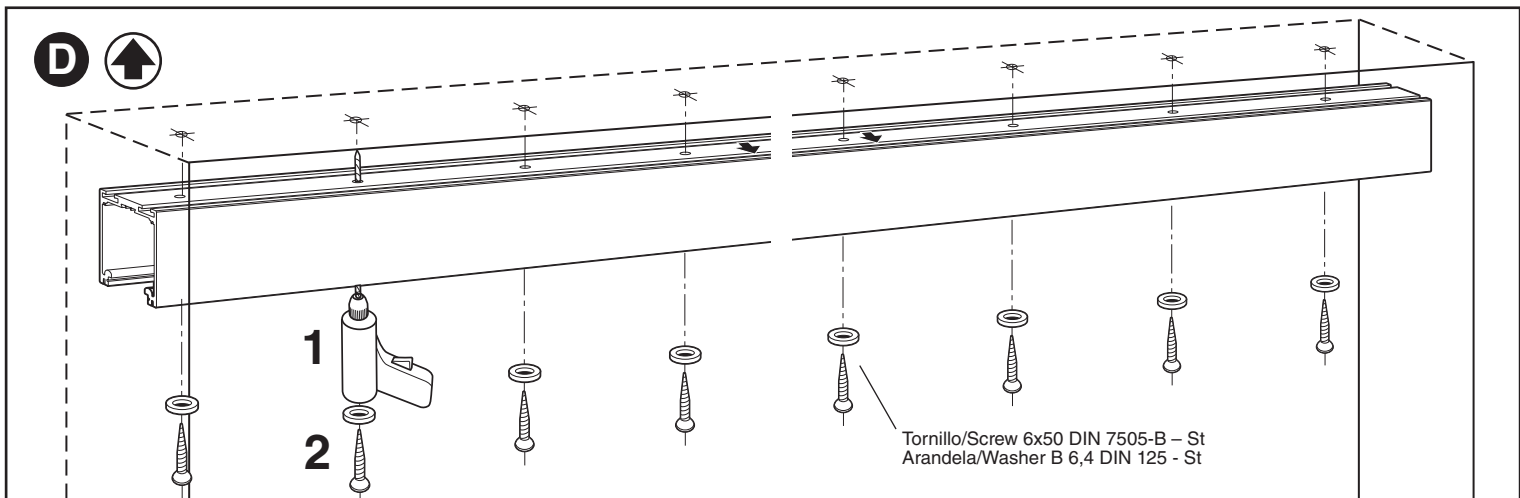
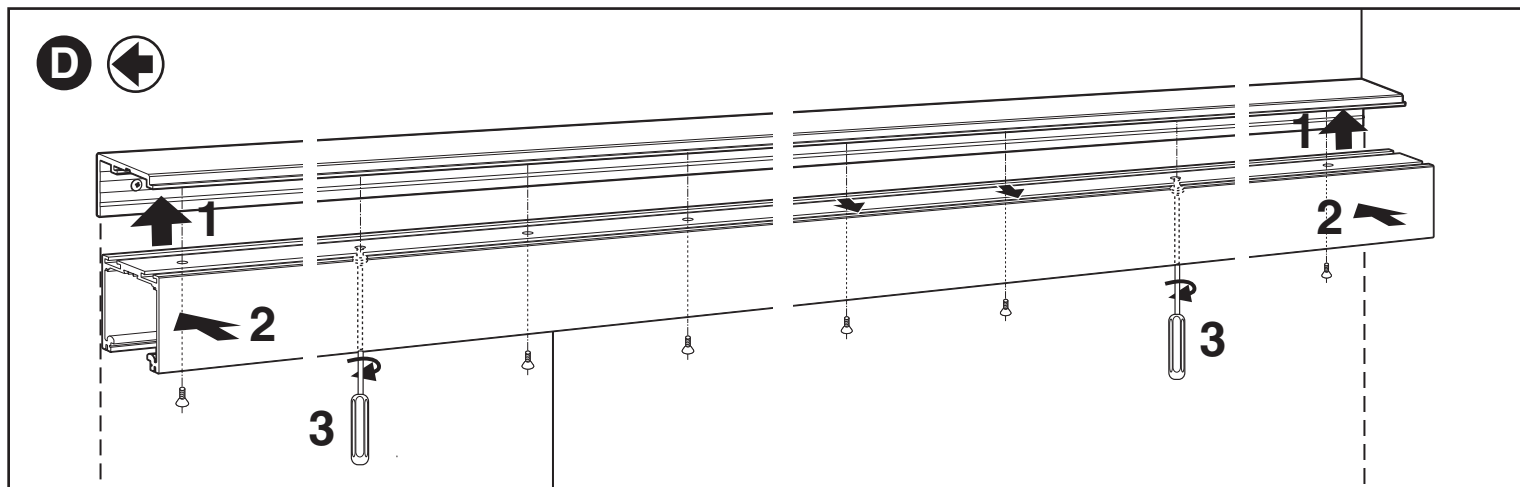
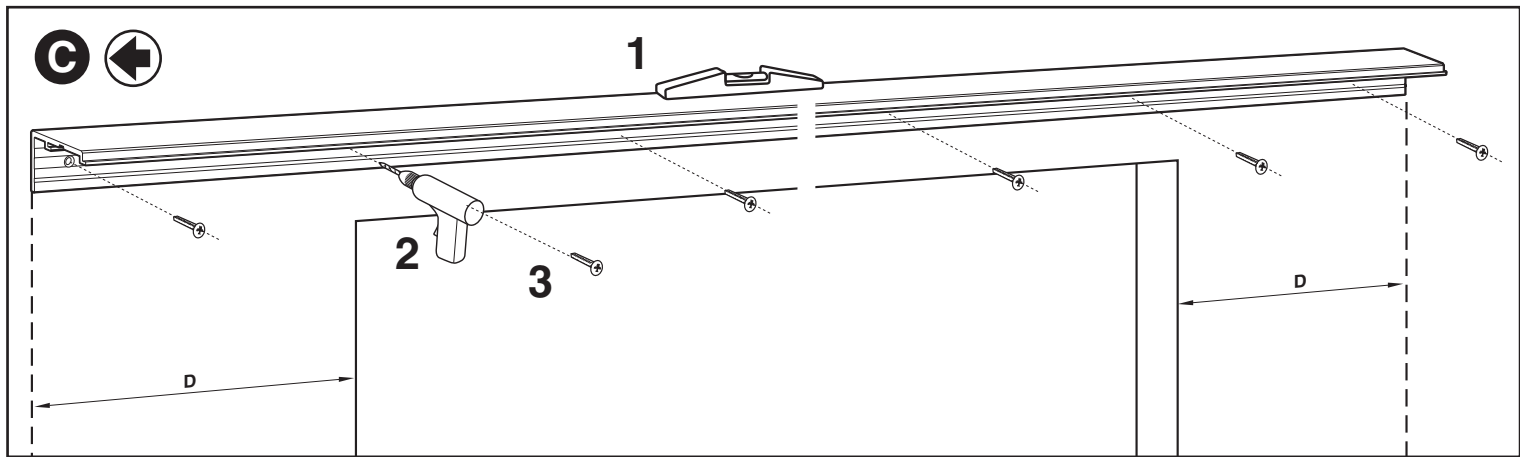
Instal. superior

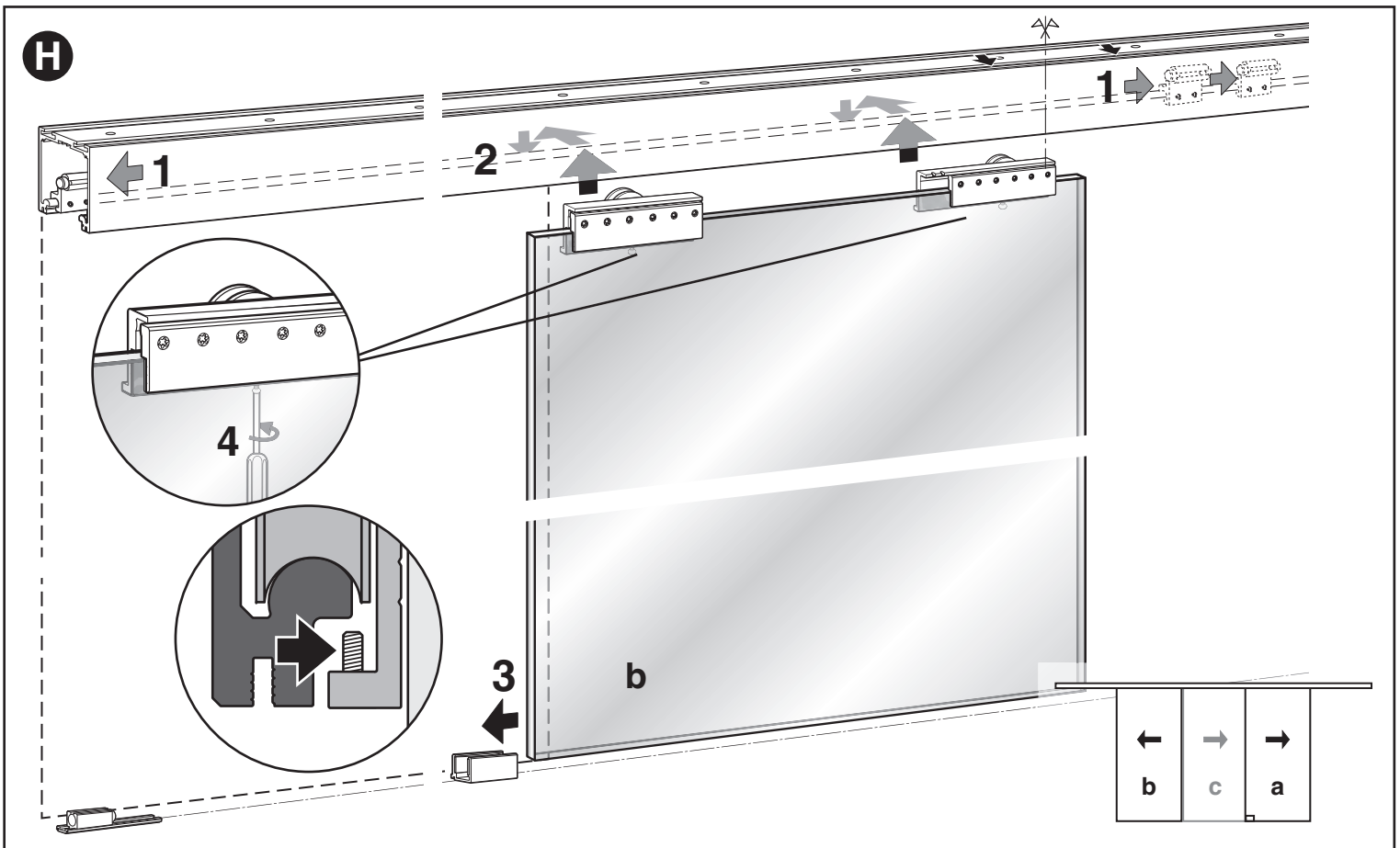
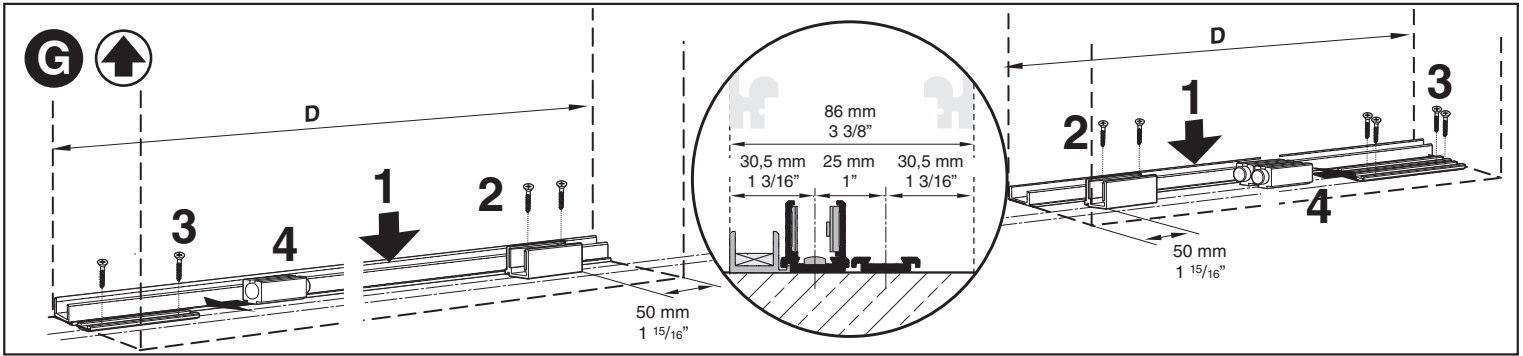
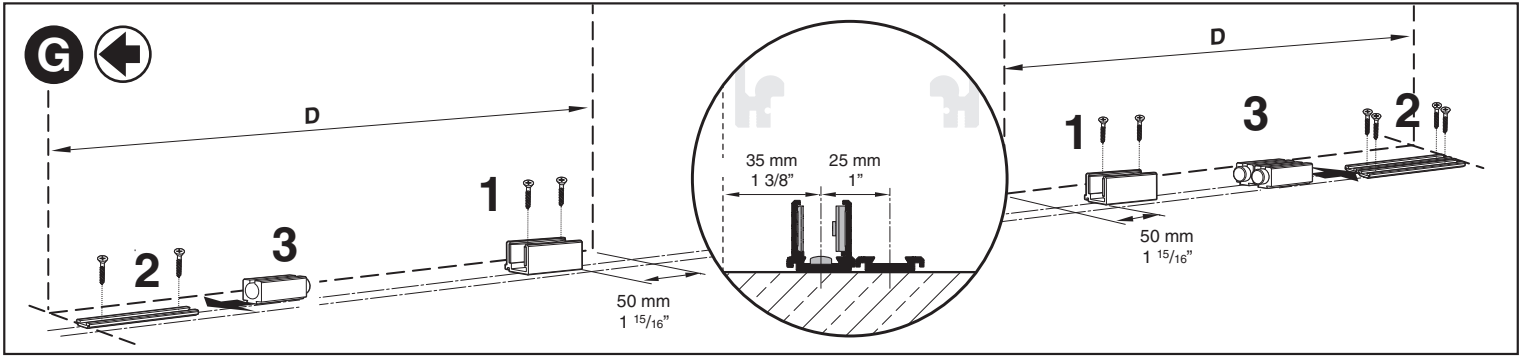
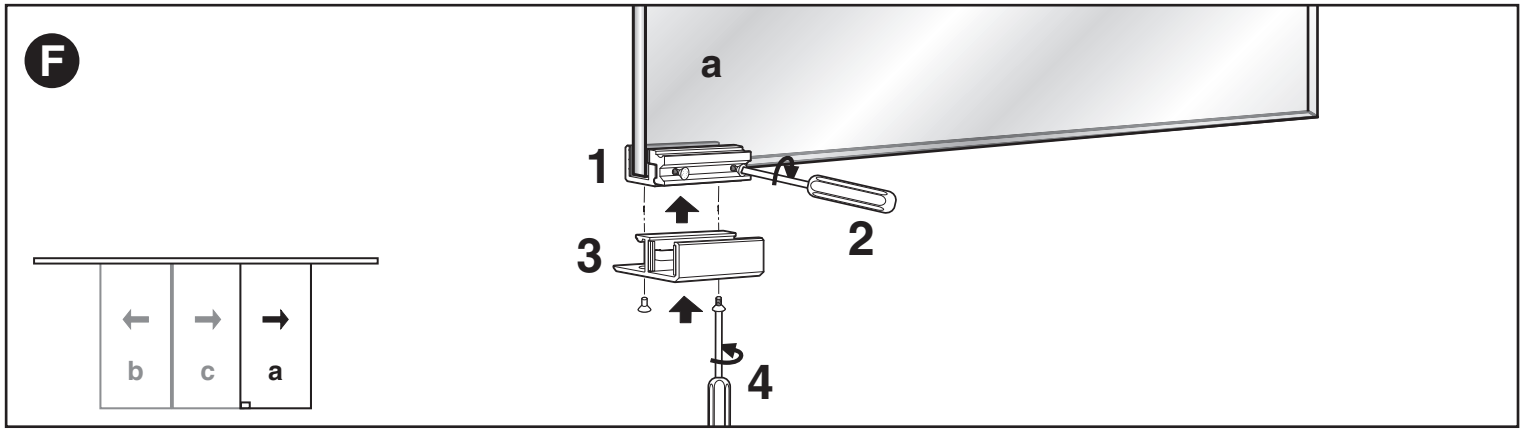


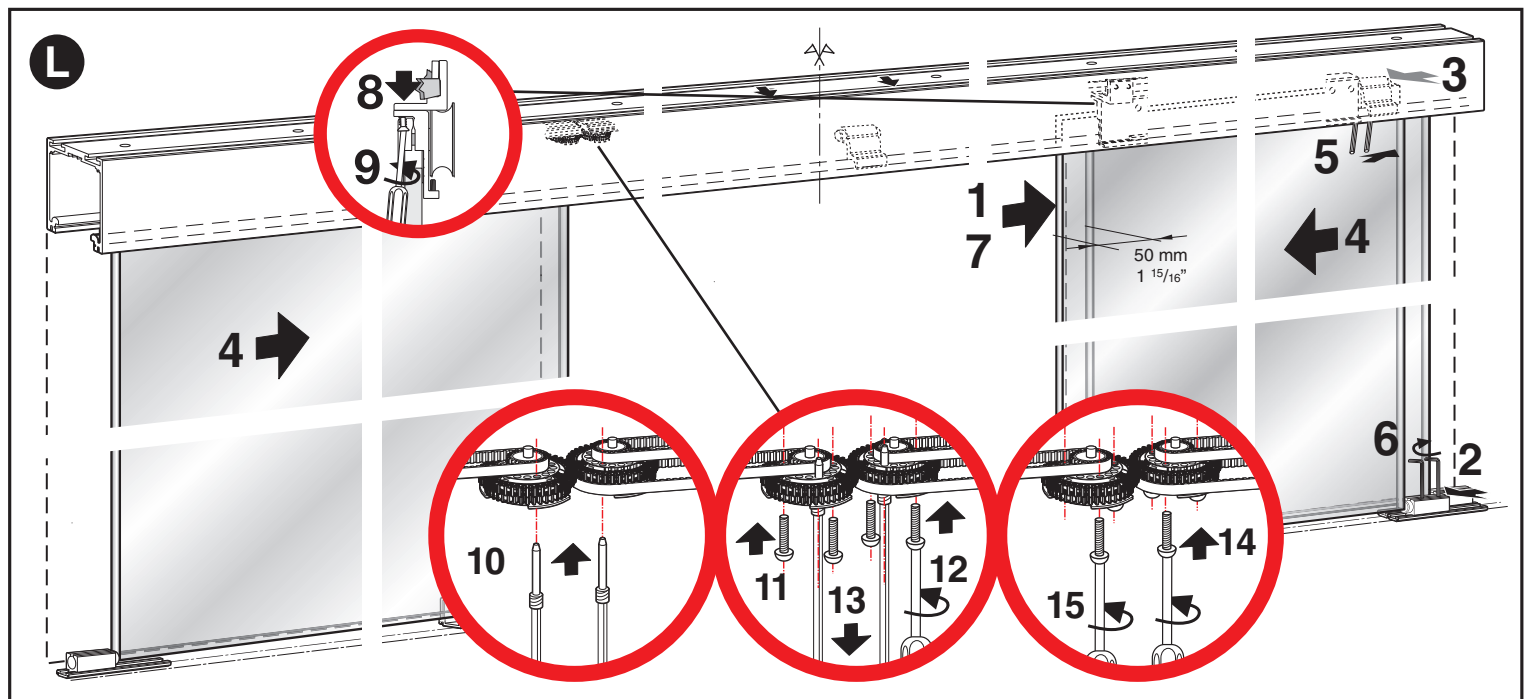
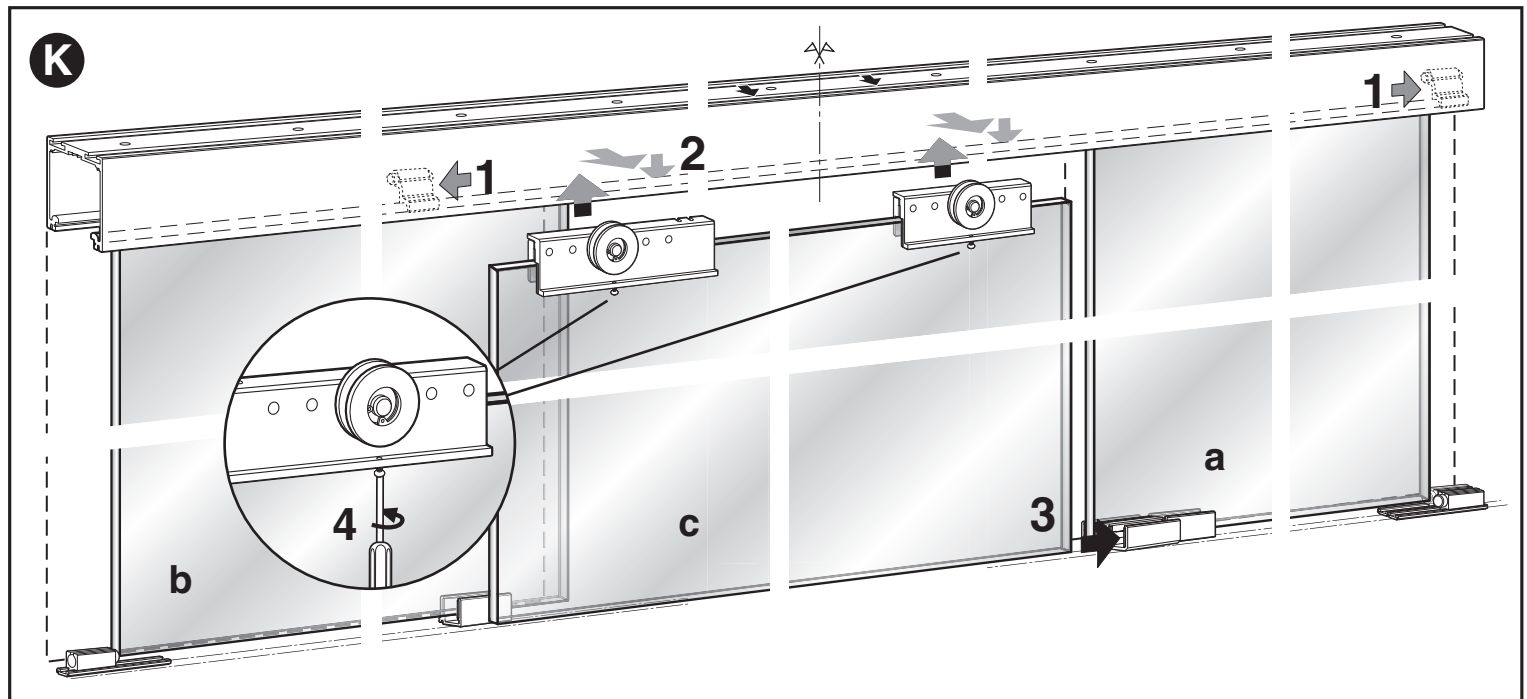
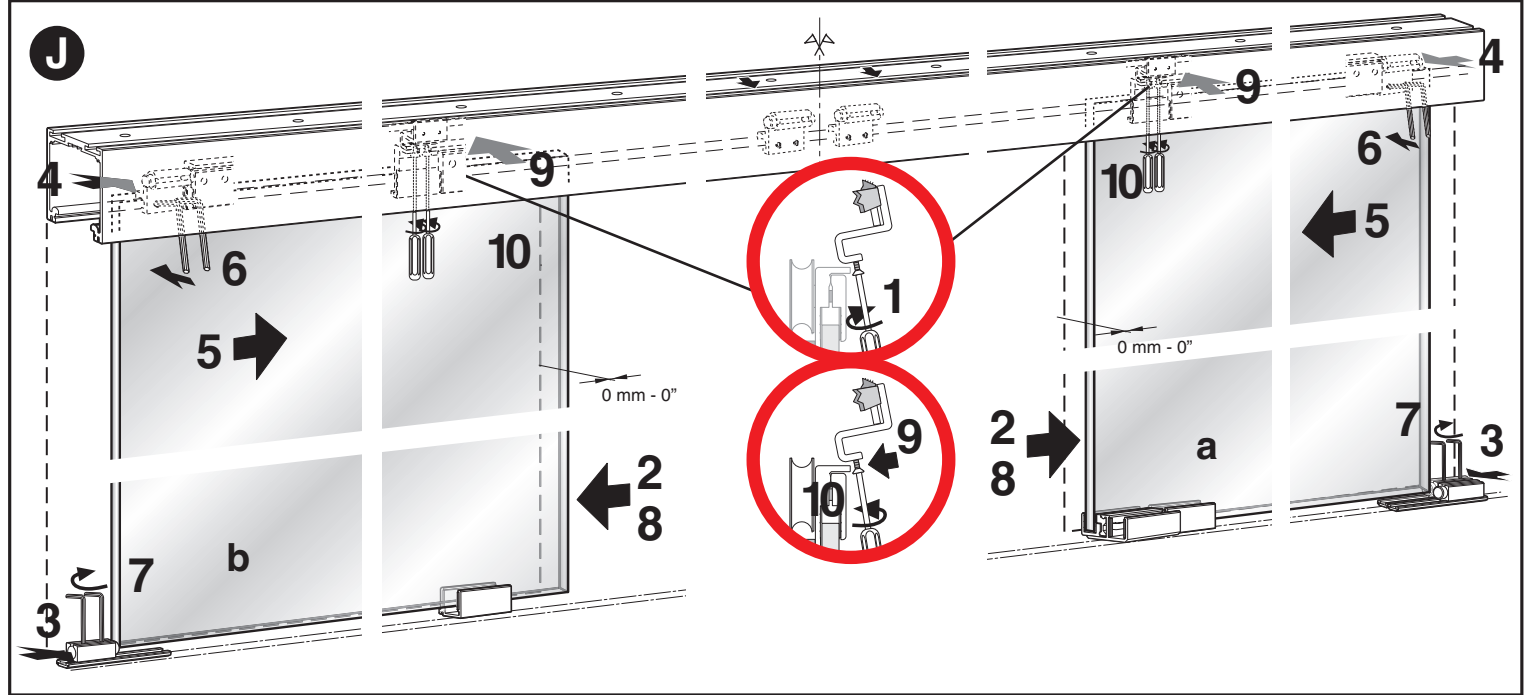
Ref.	L	Lp	hv
1631/1636	1.725-2.175 mm (5' 7 ¹⁵ / ₁₆ " - 7' 1 ⁵ / ₈ ")	4.000 mm (13' 1 ¹ / ₂ ")	≤ 3.000 mm (9' 10 ¹ / ₈ ")
1632/1637	2.175-2.775 mm (7' 1 ⁵ / ₈ " - 9' 1 ¹ / ₄ ")	5.000 mm (16' 4 ⁷ / ₈ ")	≤ 2.500 mm (8' 2 ⁷ / ₁₆ ")

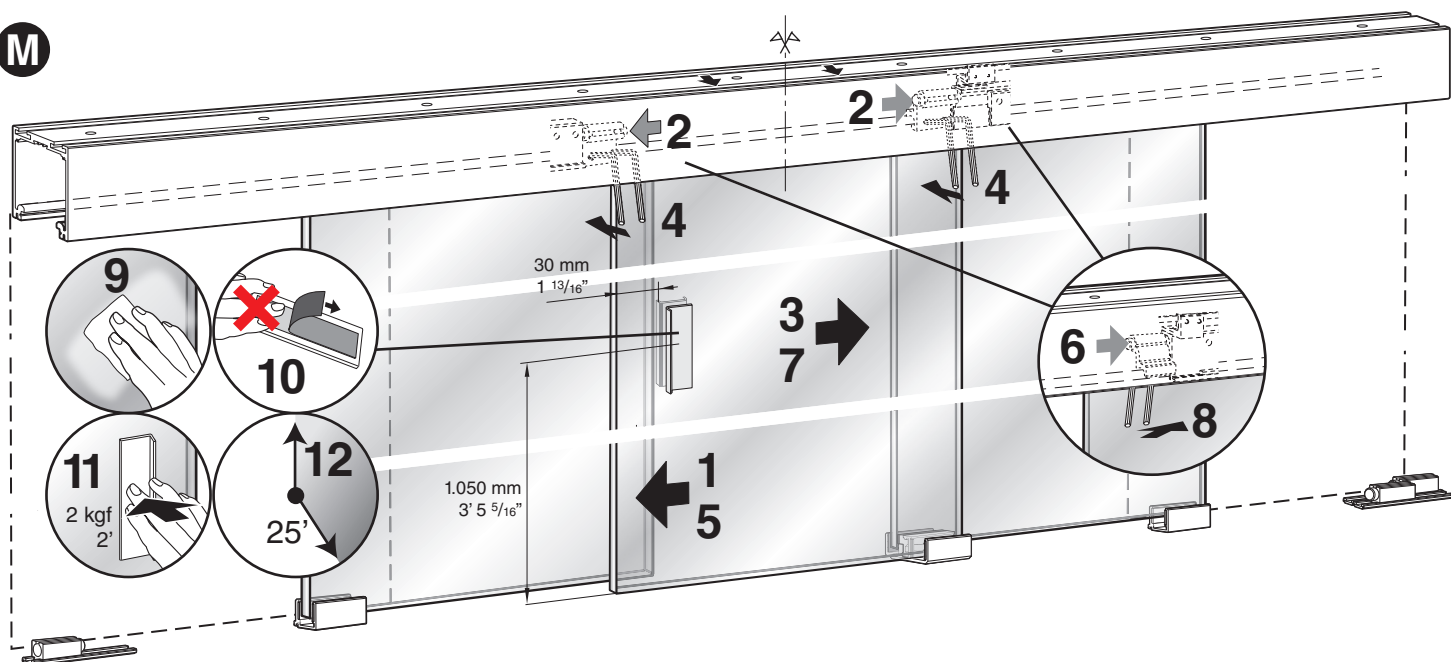
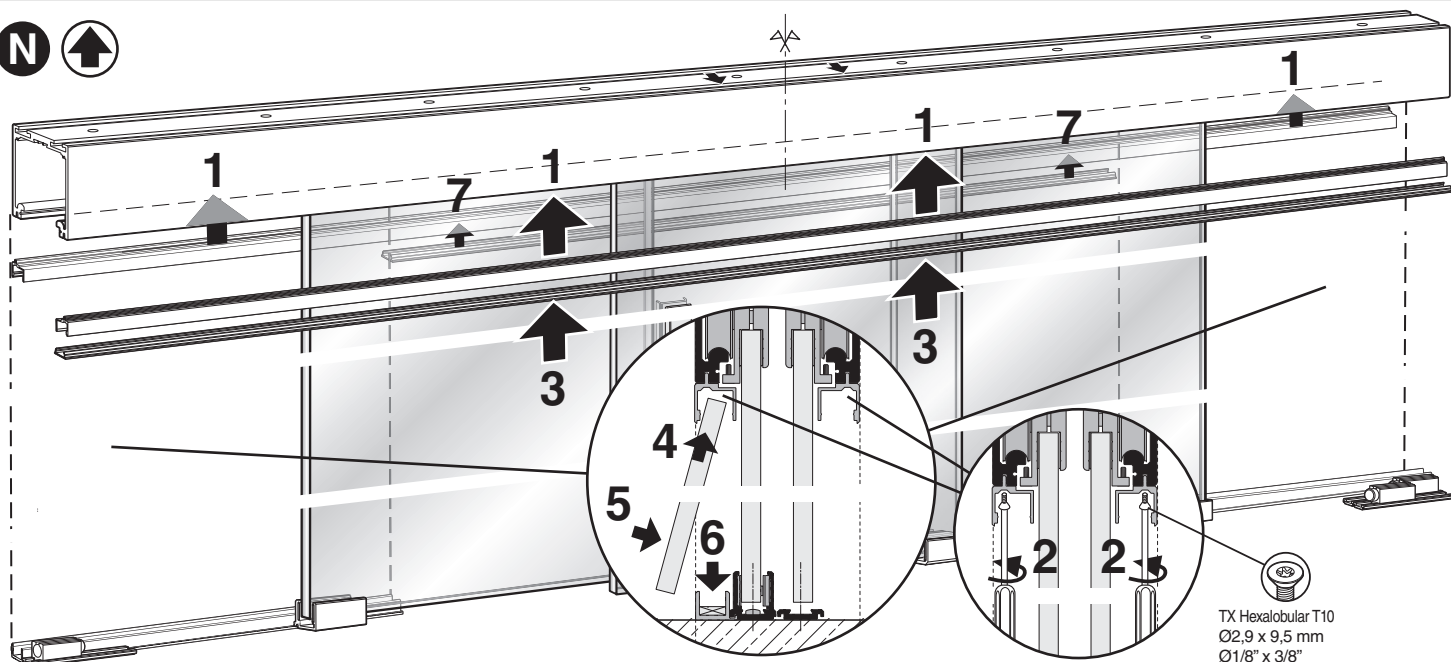
L = _____	$D \geq \frac{L}{3} + 150 \text{ mm (5' } \frac{7}{8} \text{")}$	$Lp = Dx2+L$	$Lv = \frac{L}{3} + 100 \text{ mm (3' } \frac{15}{16} \text{")}$
-----------	--	--------------	--



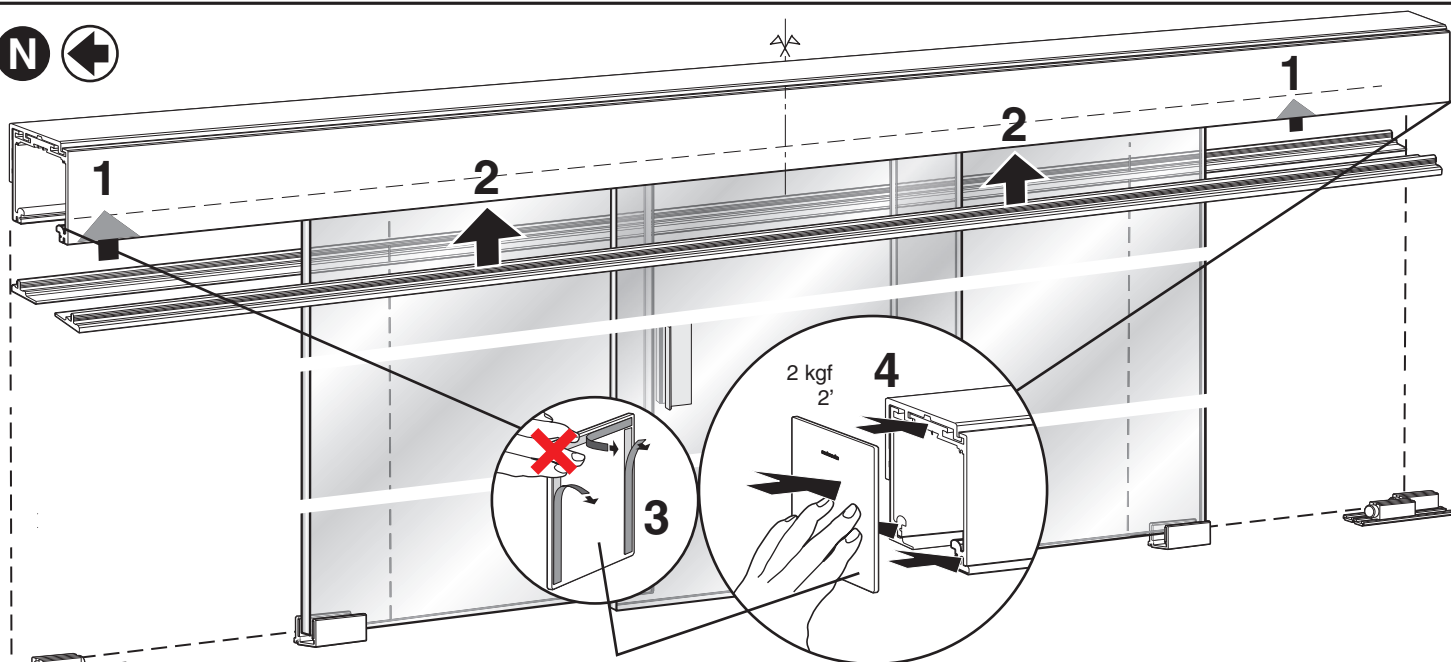






M**N** 

TX Hexalobular T10
 Ø2,9 x 9,5 mm
 Ø1/8" x 3/8"

N 

NO INCLUIDA - NOT INCLUDED