



## Giunzioni Connecting fittings

GIUNZIONE DELLA SERIE GN450  
E' CARATTERIZZATA DALL'ESSERE  
COMPLETAMENTE A SCOMPARSA  
UNA VOLTA MONTATA.

FIGURA A: LA PARTICOLARE FORMA  
INDICATA NELLA FIGURA A GENERA  
DURANTE L'ASSEMBLAGGIO UNA  
FORZA DI TRAZIONE TRA RIPIANO E  
IL MONTANTE.

FIGURA B-C: MOSTRA LA  
MODALITA' DI ASSEMBLAGGIO  
DELLA SERIE GN450 SIA CON  
SCORRIMENTO ORIZZONTALE DEL  
PIANO (FIG.B) SIA CON  
SCORRIMENTO VERTICALE DEL  
PIANO FIG. C.  
SI FA NOTARE CHE PER ESEGUIRE I  
MONTAGGI E' NECESARIO  
COMPRIERE IL PERNO A  
SCOMPARSA PER PERMETTERE IL  
PASSAGGIO DEL RIPIANO.

THE GN450 SERIES CONNECTING  
FITTING IS CHARACTERISED BY  
BEING COMPLETELY RETRACTABLE  
ONCE INSTALLED.

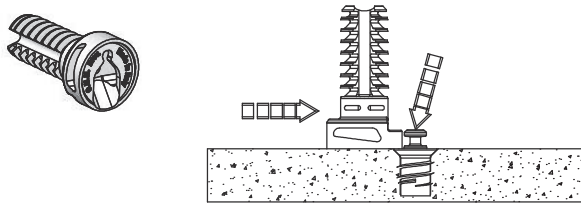
FIGURE A: THE SPECIAL SHAPE  
INDICATED IN FIGURE A GENERATES  
A TRACTION FORCE BETWEEN THE  
SHELF AND THE UPRIGHT WHEN  
ASSEMBLING.

FIGURES B: SHOW THE TWO  
ASSEMBLY METHODS OF THE  
GN450.

FIGURE C: SHOWING THE  
RETRACTABLE PIN TO BE  
COMPRESSED TO ALLOW THE STEP  
UP TO THE SHELF FINAL  
PLACEMENT.

# Serie GN450 GN450 Series

figura : A Assemblaggio  
drawing: A Assembly



50N  
Forza esercitata  
dalla parte elastica  
Force from the  
elastic part

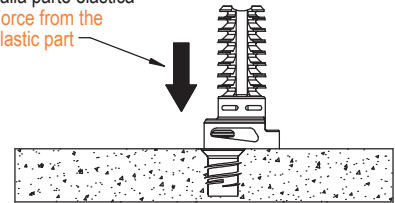


figura : B Assemblaggio Orizzontale  
drawing: B Horizontal Assembly

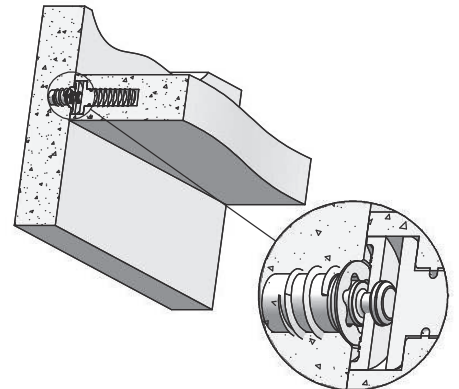
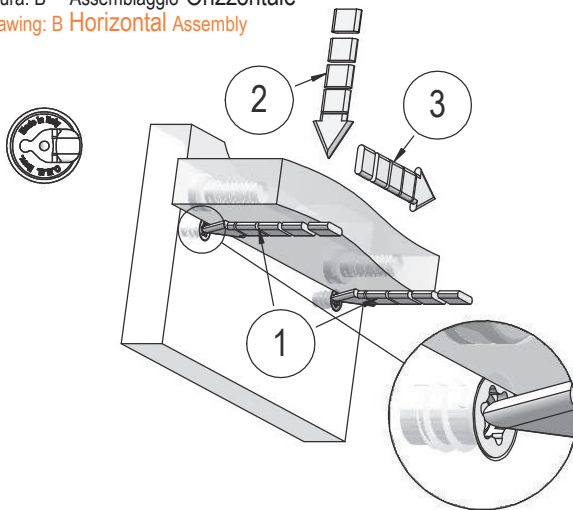
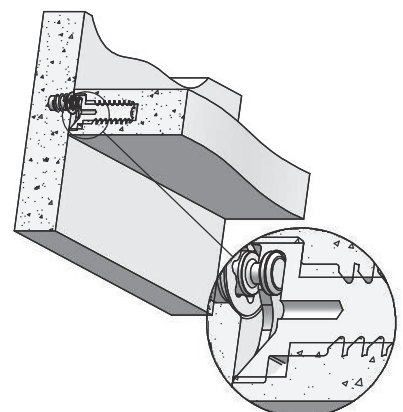
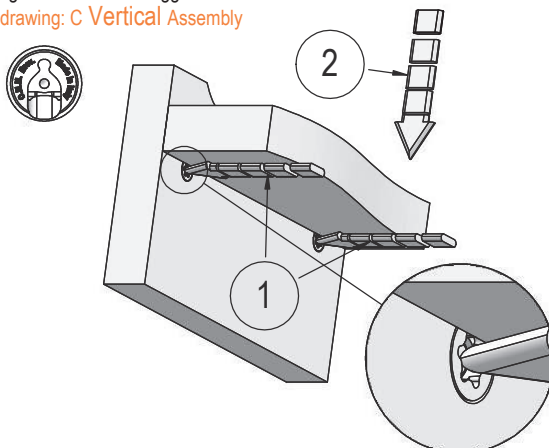
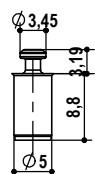


figura : C Assemblaggio Verticale  
drawing: C Vertical Assembly

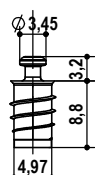




## Giunzione tipo GN452.12 a scomparsa Invisible shelf support GN452.12 type invisible



Perno a scomparsa ST  
Hidden pin ST  
A.GN400.ST.05.09.02

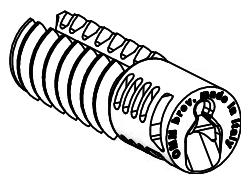


Perno a scomparsa ST.EU  
Hidden pin ST.EU

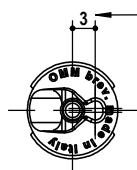
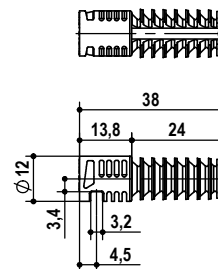
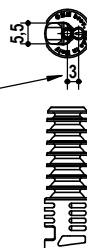


Chiave torx T25  
torx screwdriver T25  
A.GN400.STEU.05.09.02

nylon grigio  
gray nylon

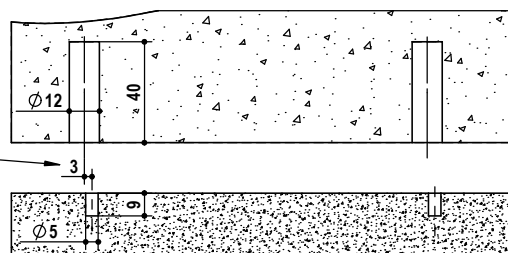


sfasamento  
foratura perno  
hole phase  
displacement

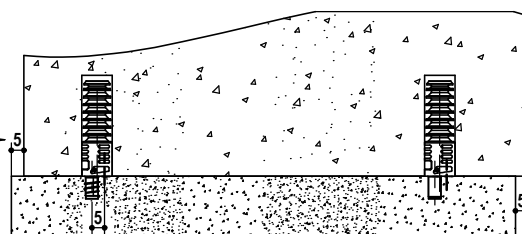


Assemblaggio Orizzontale  
Horizontal Assembly

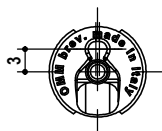
sfasamento  
foratura perno  
hole phase  
displacement



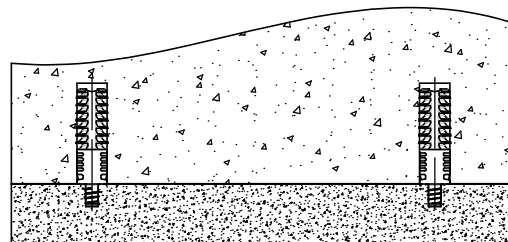
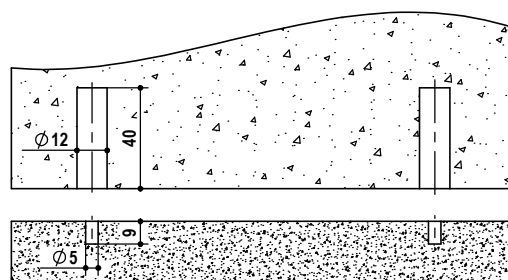
sfasamento  
per assemblaggio  
not aligned  
for assembly



direzione di  
assemblaggio  
assembling  
direction



Assemblaggio Verticale  
Vertical Assembly



| tipo<br>type | misura<br>measure | finitura<br>finishing | kg /<br>1000pz | pcs/<br>pack | pcs/<br>box |
|--------------|-------------------|-----------------------|----------------|--------------|-------------|
| P.GN452.     | 12.               | 55 grigio gray        | 6              | 50           | 1000        |