

# FOLDING DOOR: INSTALLATION INSTRUCTION

## SERIES 1200

Version 1.1 (2017-03-30)

3.03.2.c

easy                      medium                      difficult

Installation 

Subject to technical changes.

**raumplus**

# CONTENT AND TOOLS

## CONTENT:

Content and tools	page	02
Product information	page	03
Manual	page	04
Accessories	page	05
Detail drawings	page	06
Installation instruction	page	07
Potential Source of Error	page	14



The working steps described in this instruction are exclusively valid for the Folding door »DIN left«. The assembly for the hinge door »DIN right« is to be carried out mirror-inverted.

## TOOLS:

(without claim of completeness)

- (Percussion) drilling machine
- Steel drill set
- Wood drill set or stone drill set
- Cordless screwdriver
- Aluminium saw
- Allen key set
- Water level



### VERSION INFORMATION:











Version 1.1: Installed adapted

# PRODUCT INFORMATION

## GENERAL INFORMATION: Preparation

- This manual is part of the product and describes the safe and proper installation of the system. Please read the instructions carefully before installation
- Please note that the assembly should only be done by qualified and trained staff in strict compliance with all details indicated in this document. Improper installation in variation from manufacturer's specification may cause defects and danger, thus endangering the safe fixing of the product as well as the safety of the prospective user. The liability of the manufacturer shall be excluded in case of defects and consequential damages resulting from incorrect assembly of this product.
- Please check the completeness of the delivered parts and check carefully if any transport damages are visible.
- If any parts are damaged or lost, please immediately contact the responsible supplier.
- It is assumed that you have exactly identified all cutting dimensions according to the measurement instruction for **raumplus** products.

## SYMBOLE:

Symbol	Importance	Symbol	Importance
	Risk or danger!		During the installation do not use a striking tool
	Advice and information		No leverage tool for disassembly of fittings
	Additional information / other documents		Be aware of the risk of entrapment.
	Directional data / direction of movement		
	„yes“ and „right“		
	„no“ and „wrong“		
	Follow the order		

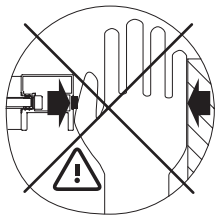
## SYSTEM:

### System Information: System 42 Serie1200

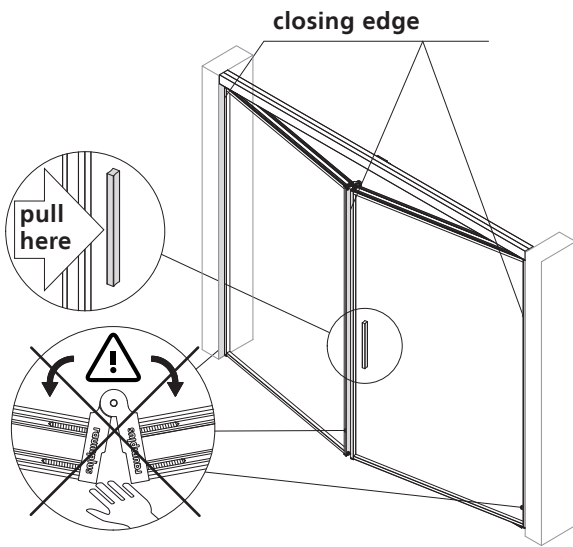
- max. weight of element = **30 kg**
- min./max. door height = **700 mm / 2750 mm**
- min./max. door width = **350 mm / 750 mm**

# MANUAL

This manual is part of the delivered product and describes the safe and proper use.



Be careful not to jam at the closing edges of the folding door.



## Designated use:

The product is designed and manufactured for indoor use.

The product was designed as a hand-guided folding door that is usually not being moved faster than walking speed and should be stopped manually when reaching the end position. The doors are guided on top and bottom track.

Any other use that deviates from the specific proper use is not according to the **raumplus** regulations.

## Manual:

Open the door by using the handle.

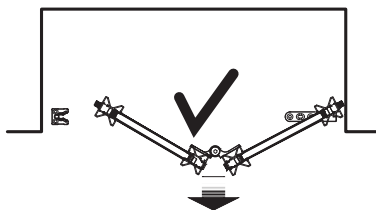
Guide the door slowly to the opening / closing point.

## Attention:

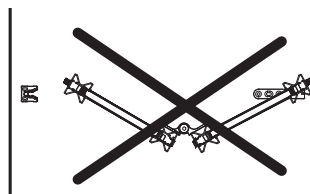
Preserve your hands from getting trapped during the movement of the door. When closing or opening the door never take hold of the profile, only use the handle profile or the handle.

Use the door as instructed.

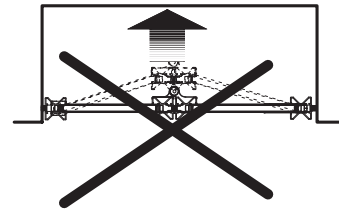
## Example of use:



The **folding door** may **only** be used **in niches**, in front of cabinets and **walk in closets**.



**Prohibited application** are **permanent passages** as well as **emergency exits**.



**Do not overstretch the hinges.**

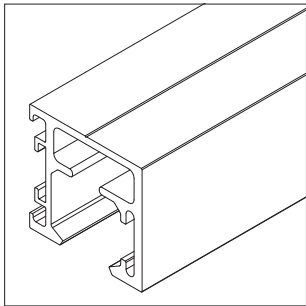
## Safety Information:

The product complies with the prior of the art and the approved safety rules at the time of delivery.

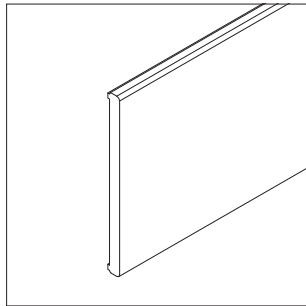
- Pay attention to child safety.
- Structural changes, additions or modifications should only be carried out by a distributor.
- In case of malfunctions or irregularities: shut down the system and contact your dealer.
- Do not touch closing edges, risk of entrapment.
- No objects to be placed between the closing edges.
- No additional load to the doors.
- Changes in the door joints may cause the door to fall out of the frame.
- Do not expose open doors to the wind.
- Do not overtighten the door.
- Beware of glass breakage.

Concerning the manufacturer's liability for his products has defined in the „Law of Liability for Products“ (§4 Prod-HaftG), please pay attention to the above information accordingly.

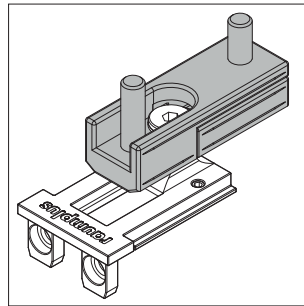
# ACCESSORIES



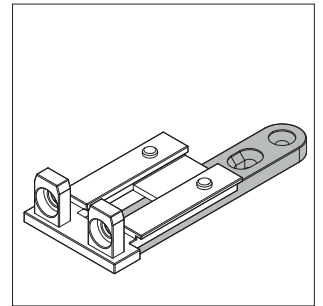
1\_ 12.45.0xx



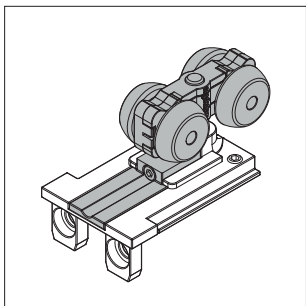
2\_ 13.33.0xx



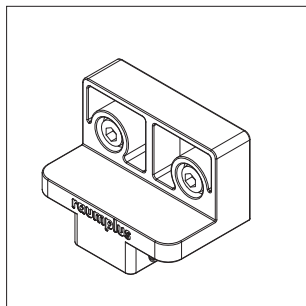
3\_ 10.02.42x



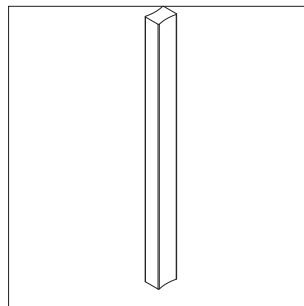
4\_ 10.02.45x



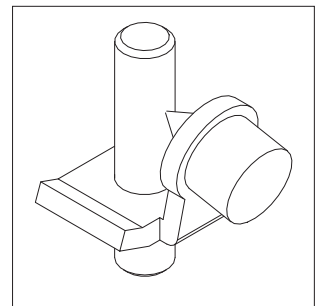
5\_ 10.02.41x



6\_ 10.02.470



7\_ 10.01.93x



8\_ 10.02.480

1\_ Folding-/hinge door track, S42

2\_ Dividing rail surface 28 mm

3\_ Pick up element set for folding-/hinge door S1200

4\_ Mounting plate set for folding-/hinge door S1200

5\_ Top roller incl. pick up element, folding door S1200

6\_ Top positioning for folding-/hinge door S1200

7\_ Cuboid handle for hinge and folding doors

8\_ Stopper for top track

**without illustration:**

9\_ Slide wing

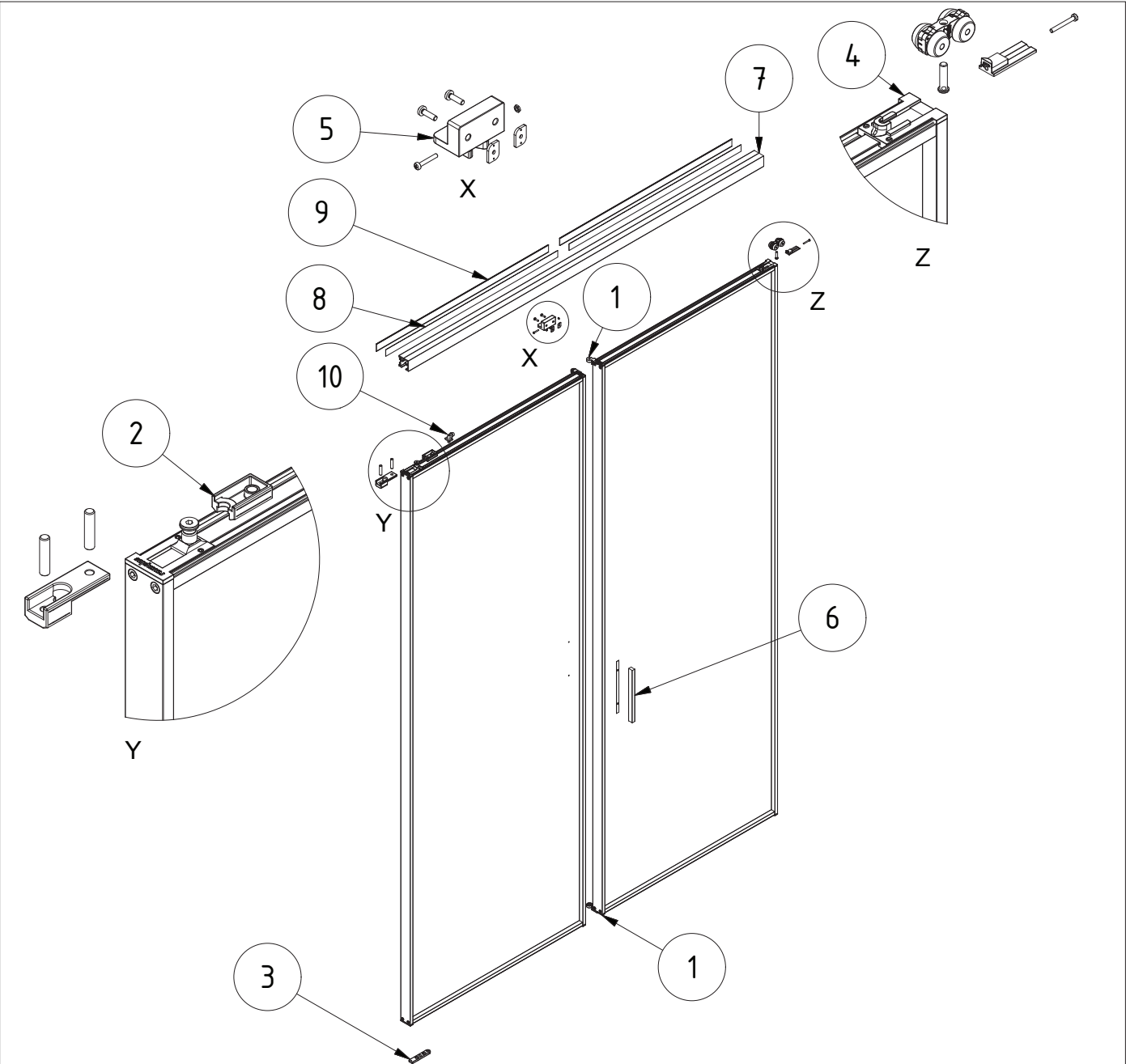
10\_ Swing wing

11\_ Plastic wedge optional 10.01.090

12\_ Double side tape for dividing rail 25.12.045

# EXPLODED DRAWING

DIN LEFT

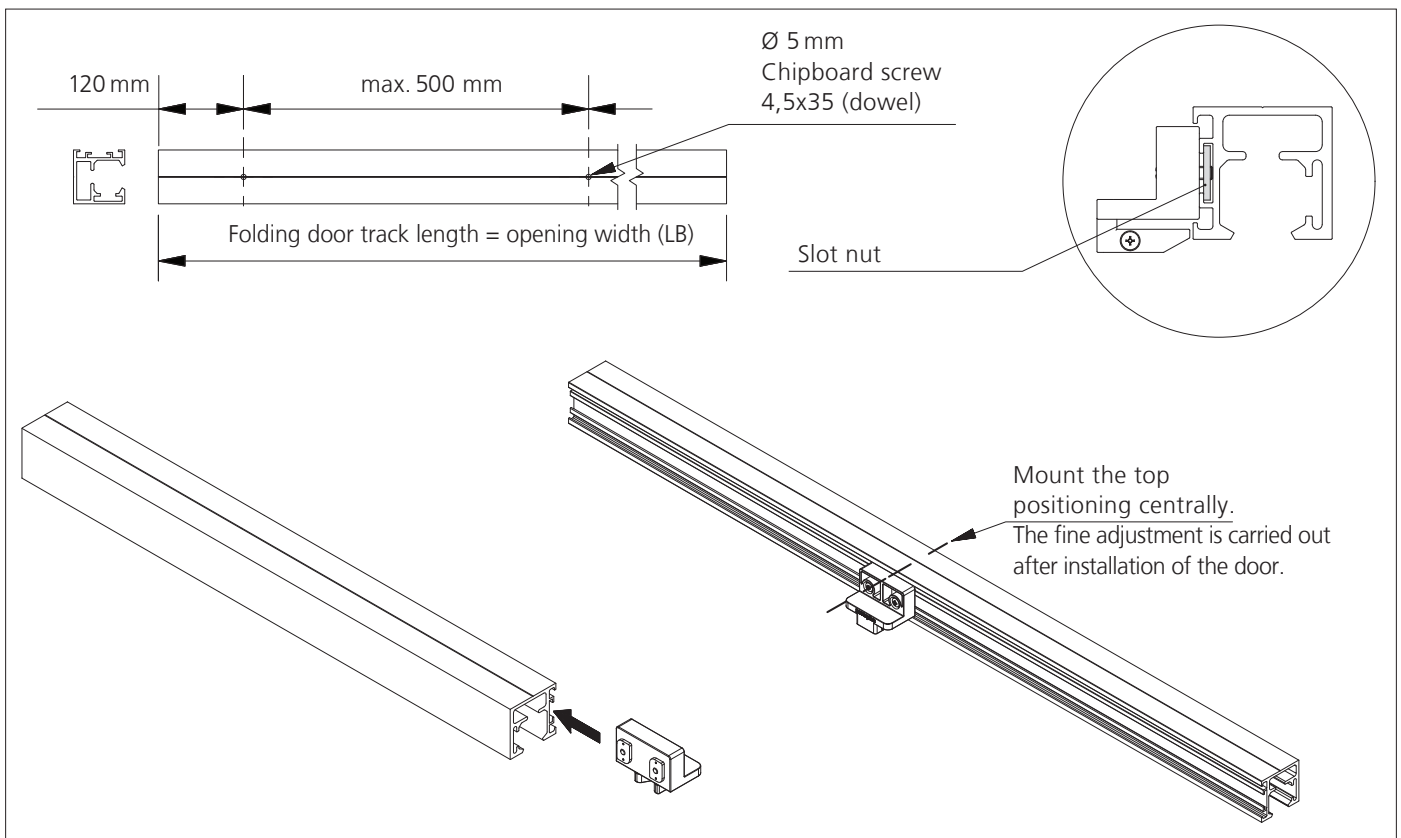


Item list			
Object	Quantity	Item	Item no.
1	1	Folding door hinge set S1200	10.02.43x
2	1	Pick up element set for folding-/hinge door S1200	10.02.42x
3	1	Mounting plate set for folding-/hinge door S1200	10.02.45x
4	1	Top roller incl. pick upelement, folding door S1200	10.02.41x
5	1	Top positioning for folding-/hinge door S1200	10.02.470
6	1	Cuboid handle for hinge and folding doors	10.01.93x
7	1	Folding-/hinge door track, S42	12.45.0xx
8	2	Double side tape for dividing rail	25.12.045
9	2	Dividing rail surface	13.33.0xx
10	1	folding door S1200	10.02.480

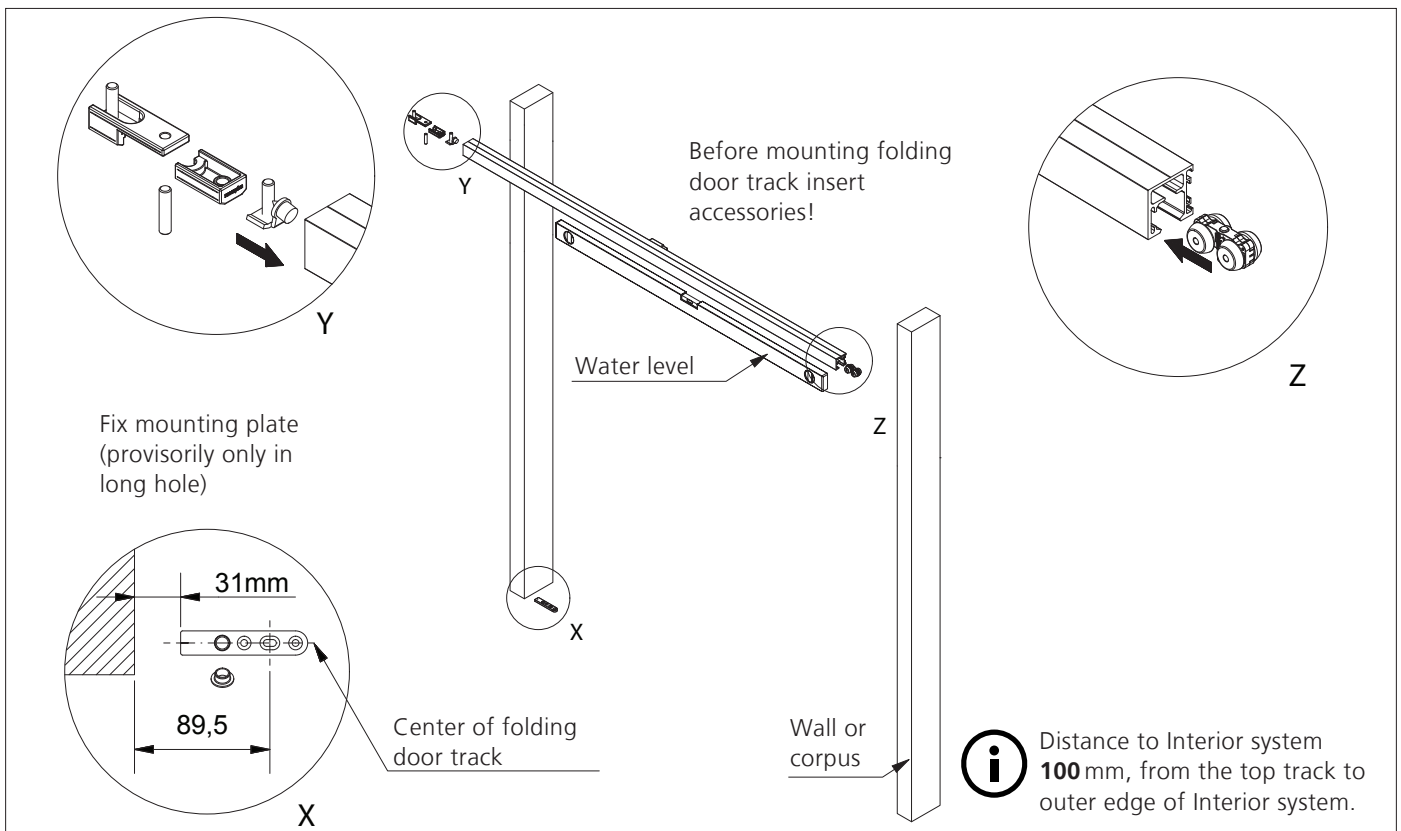
1\_ Folding door complete DIN Left

# INSTALLATION INSTRUCTION

DIN LEFT



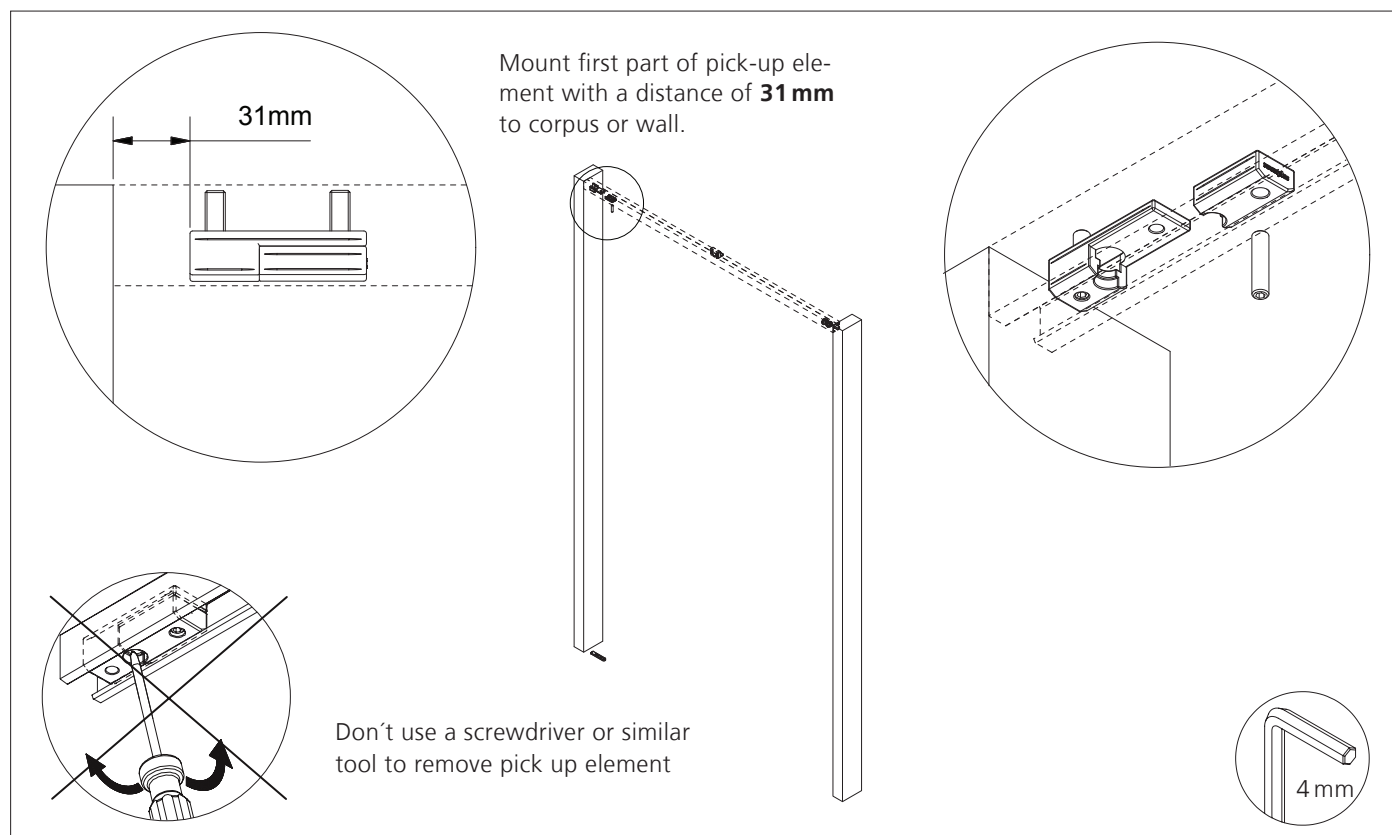
1\_ Mounting the top positioning



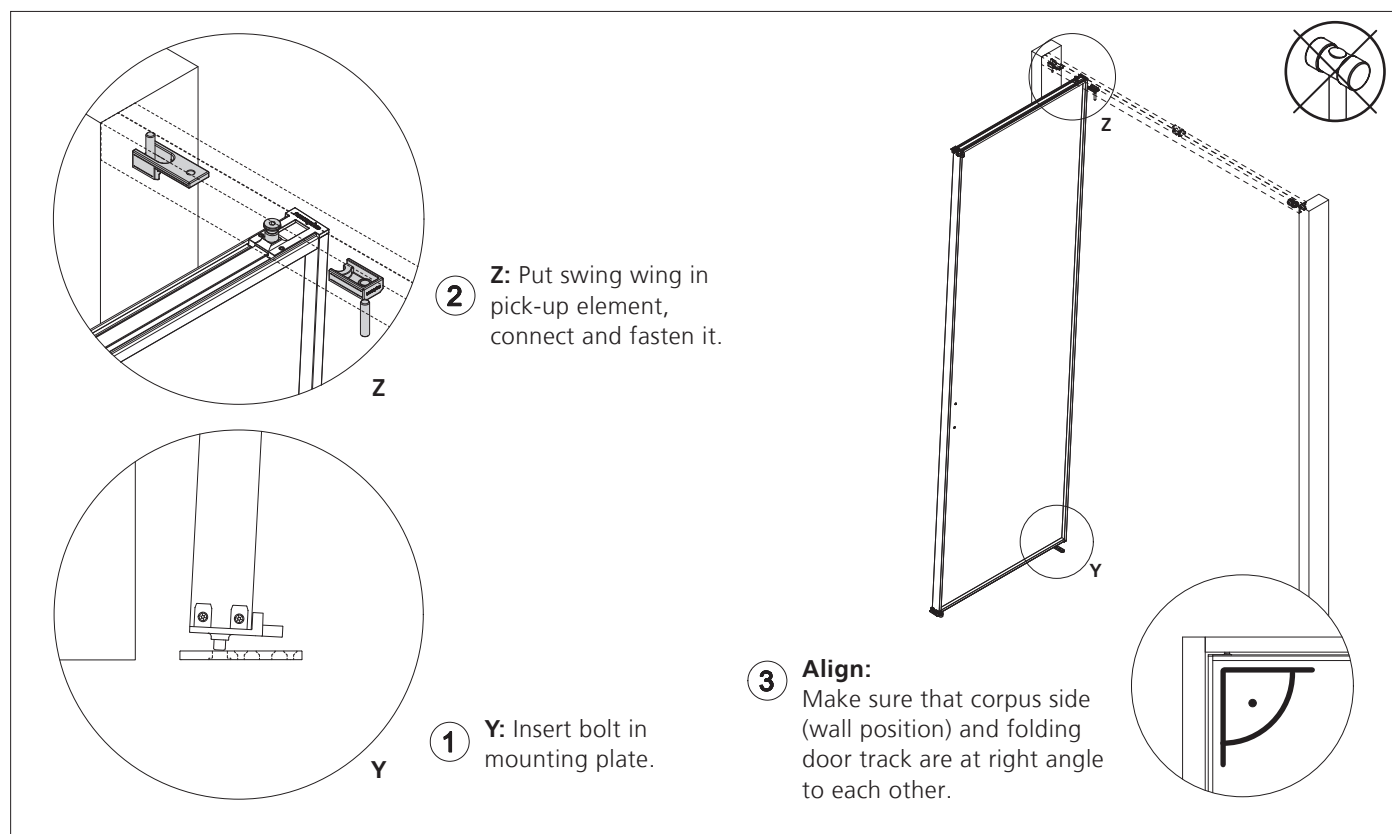
2\_ Drill holes in ceiling / top of closet corpus, mount folding door track horizontally (fig. w/o ceiling / top of closet corpus)

# INSTALLATION INSTRUCTION

DIN LEFT



## 3\_ Mount positioning for folding door and pick-up element

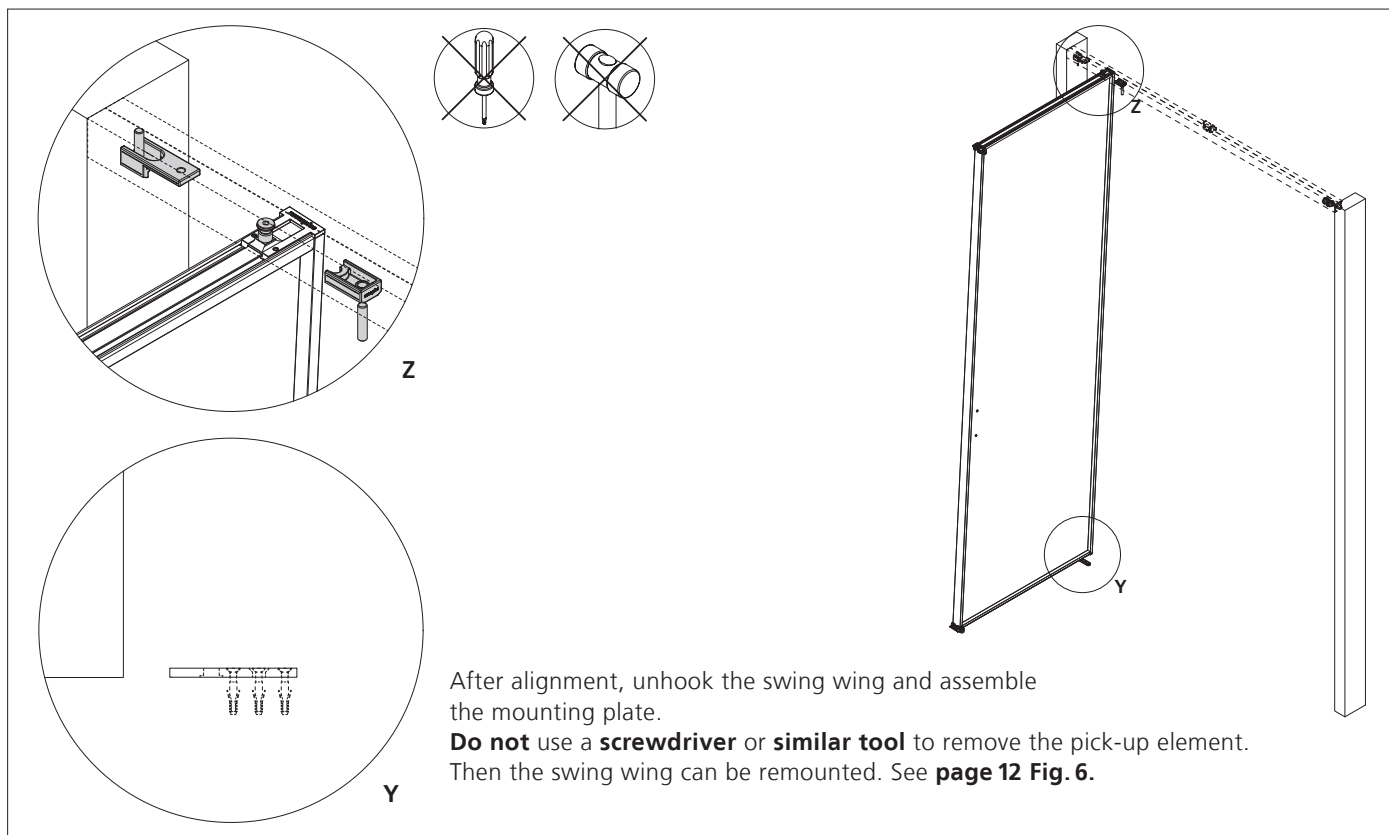


## 4\_ Install the swing wing , at the assembly no hammer may be used

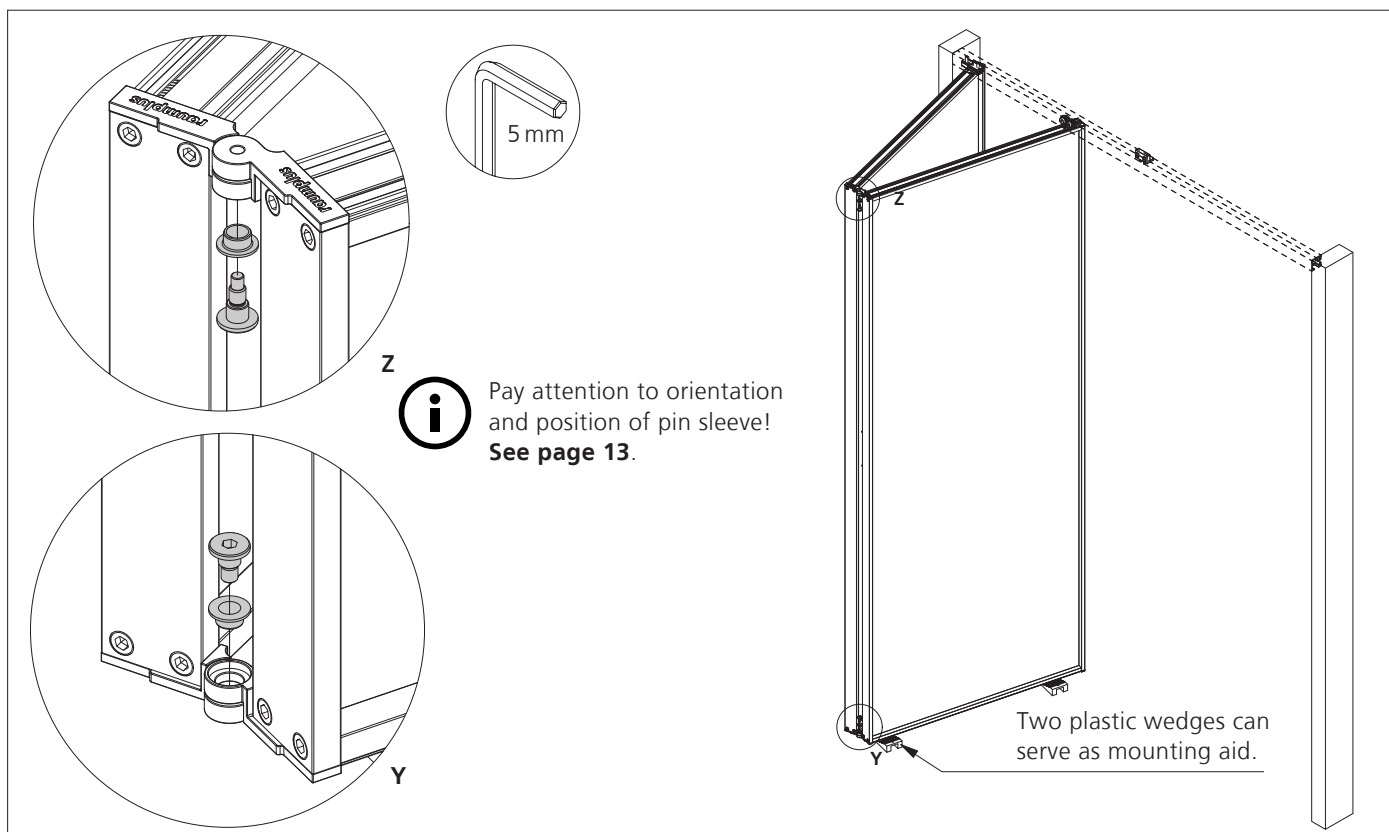


# INSTALLATION INSTRUCTION

DIN LEFT



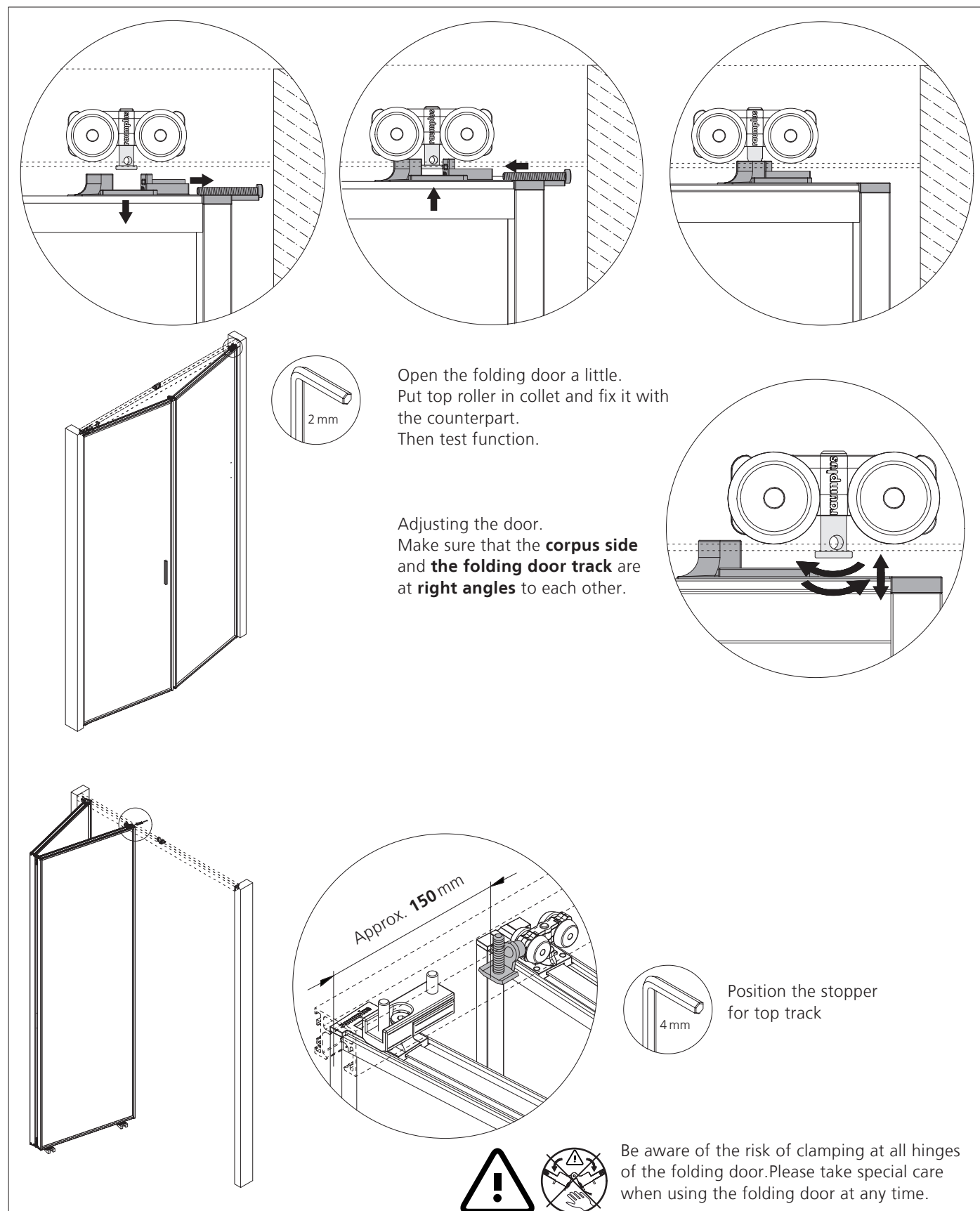
**5\_** Remove swing wing and install mounting plate.



**6\_** Mount the sliding wing

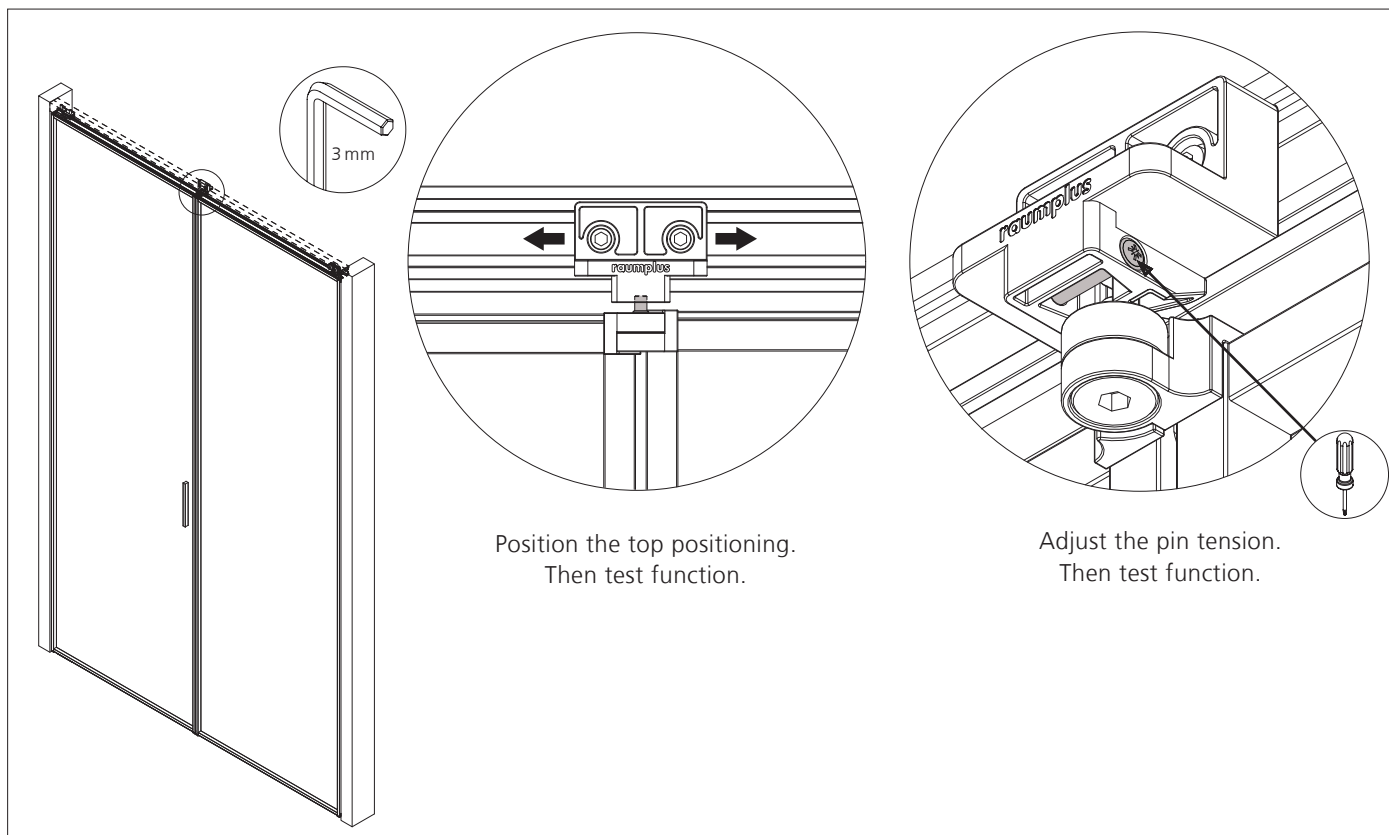
# INSTALLATION INSTRUCTION

DIN LEFT

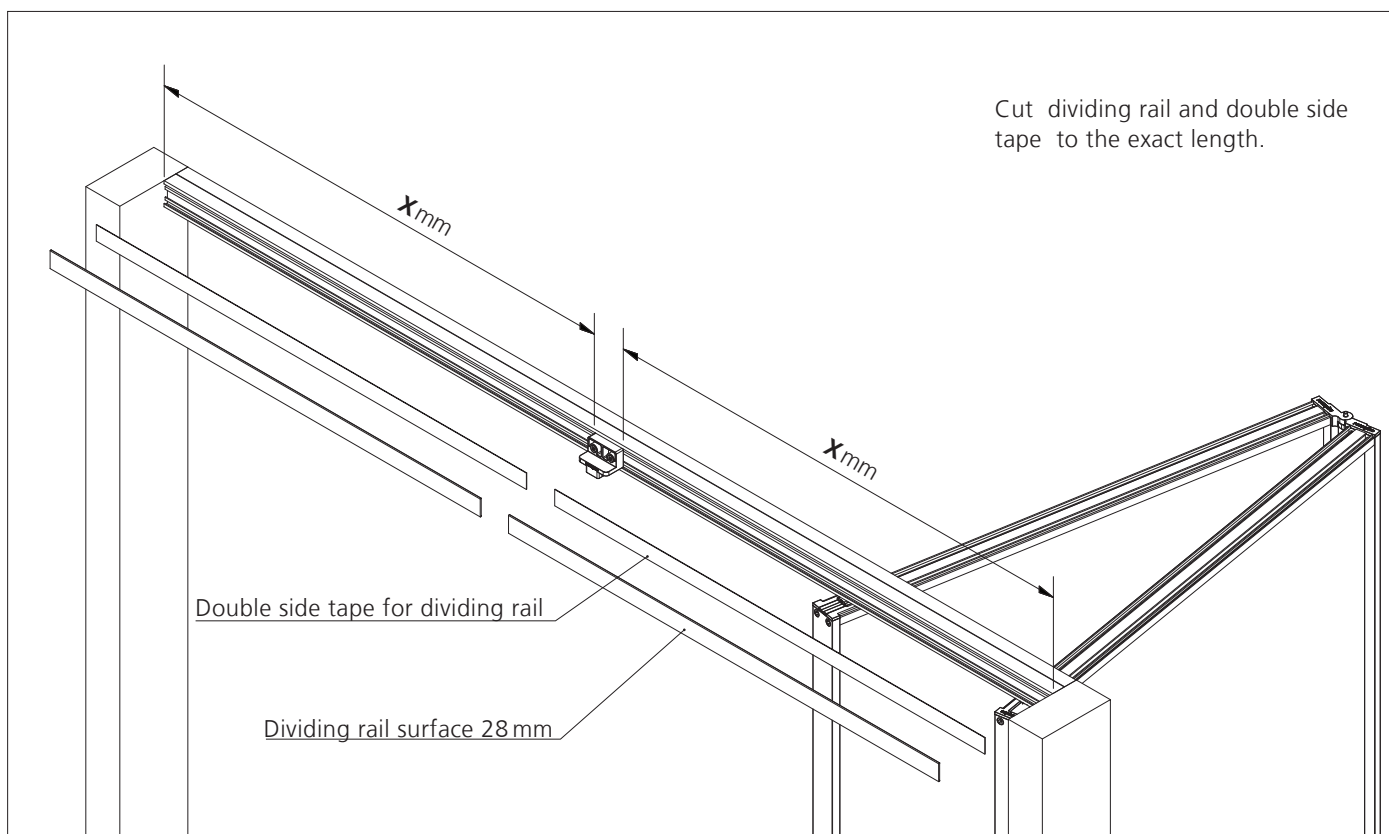


# INSTALLATION INSTRUCTION

DIN LEFT



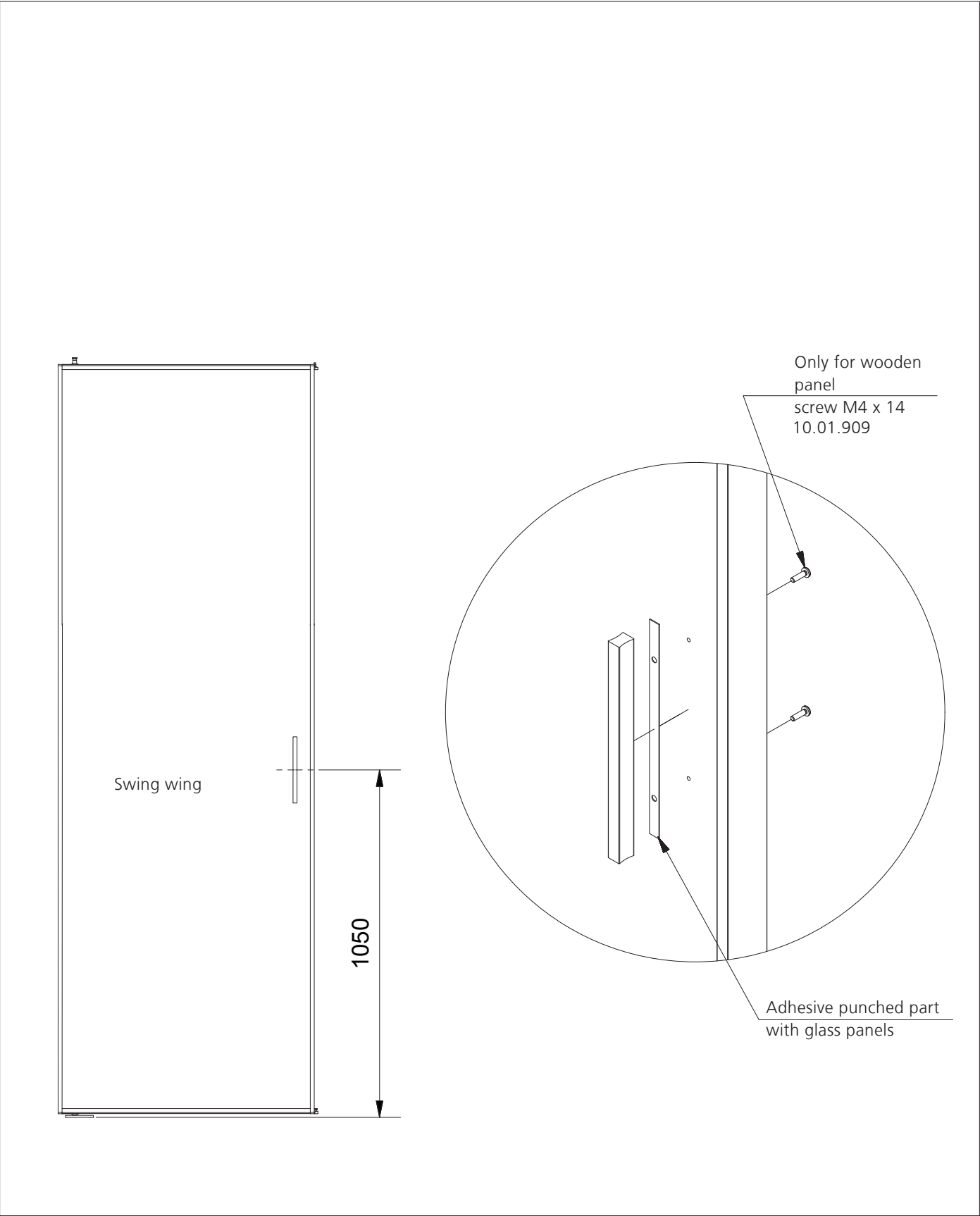
8\_ Adjusting the top positioning



9\_ Sticking the dividing rail

# DETAIL DRAWING

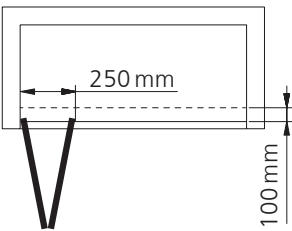
## HANDLE



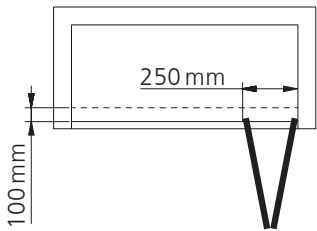
1\_ Cuboid handle for hinge doors

# DETAIL DRAWING

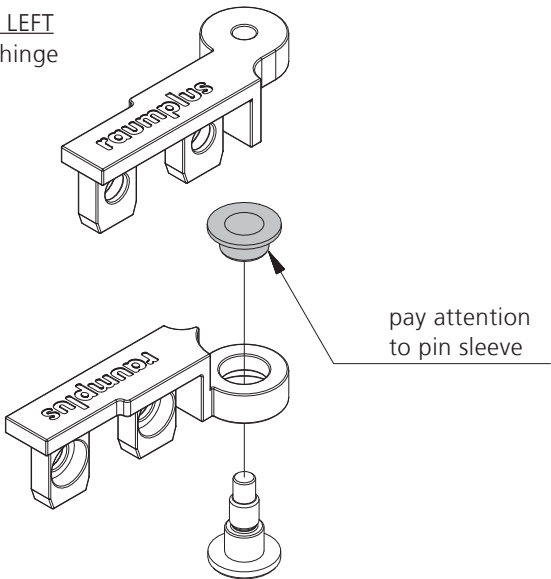
## HINGE DIN LEFT / DIN RIGHT



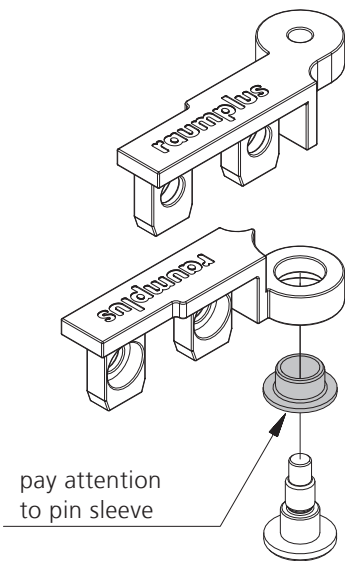
The folding door reduces clear passage to approx **250 mm** (measured from wall to outer edge of folding door).  
Distance to Interior system **100 mm**, from the top track to outer edge of Interior system. (Space required for assembly)



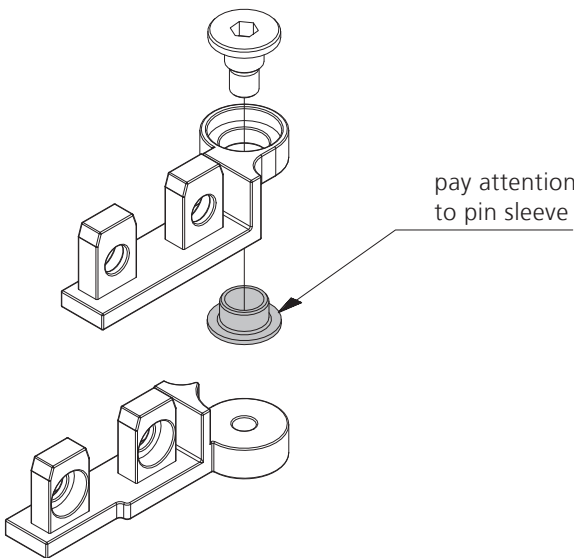
DIN LEFT  
top hinge



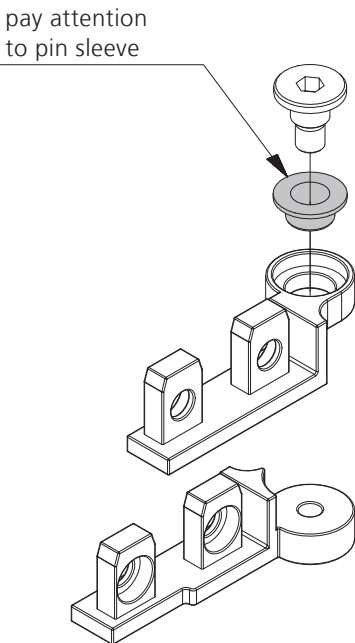
DIN RIGHT  
top hinge



DIN LEFT  
bottom hinge

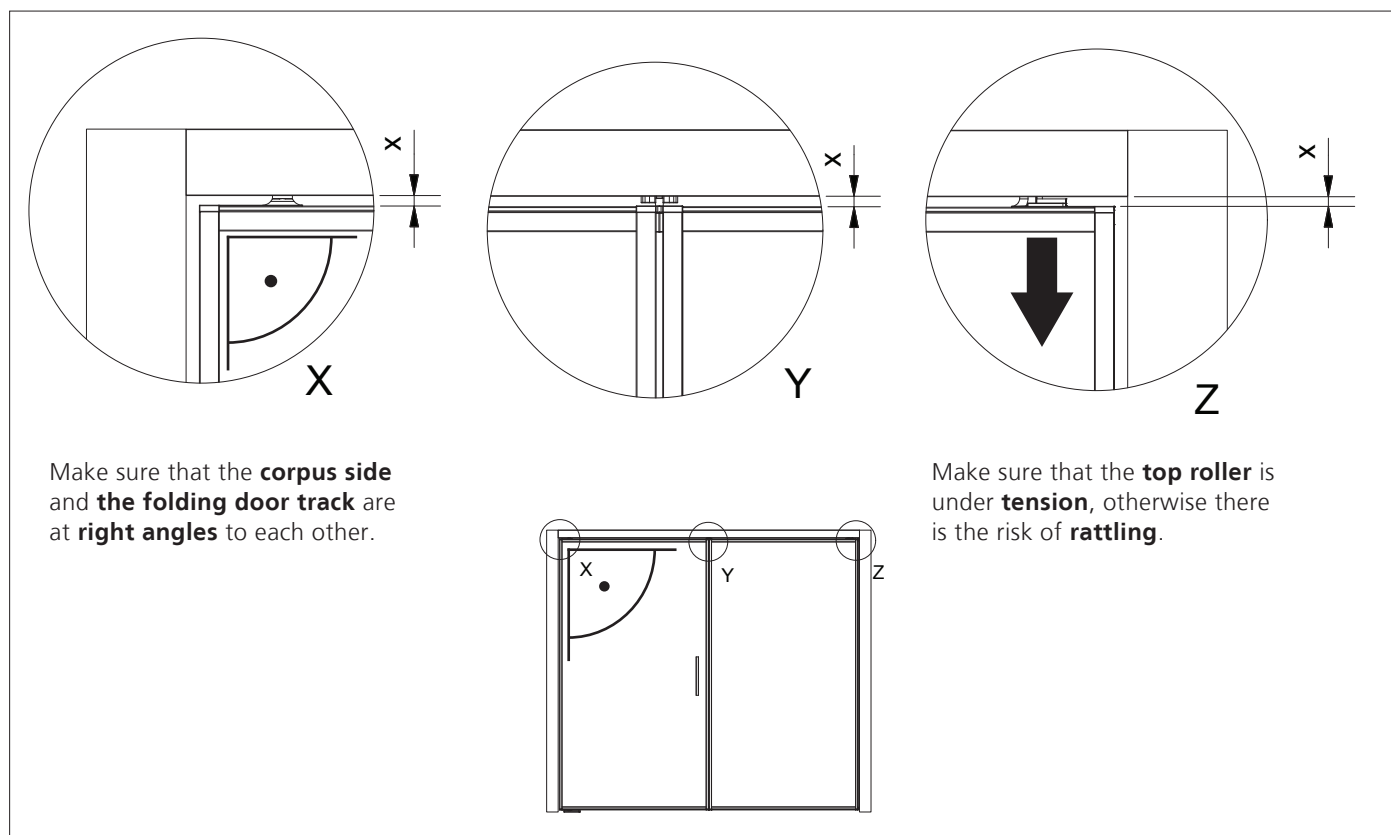


DIN RIGHT  
bottom hinge




# INSTALLATION INSTRUCTION

DIN LEFT / potential sources of error



1\_ Check parallelism of folding door to folding door track, adjust with top roller screw (if required)

Potential Source of Error	
<b>Error</b>	 The elimination is only carried out by qualified personnel!
The folding door doesn't close correct	Check the pin for the top positioning
The folding door rattles when closing	Make sure that the top roller is under tensile load, otherwise there is a risk of ratteling
The folding door hinges crunch when opening and closing	Check the fit of the slide bearing in the hinges
The folding door is grinding on the floor or at the folding door track	Make sure that corpus side and folding door track are at right angles to each other
When opening or closing the folding door a loud crack- noise occurs	Check the folding door hinges. They must be replaced if damaged

