

HINGE DOOR: INSTALL & MANUAL INSTRUCTIONS

SERIES 800

Version 1.0 (2013-04-16)

2.02.1.c

Install  easy medium difficult

Subject to technical changes.

raumplus

INDEX

Product Information_ page 03

Manual_ page 05

Accessories_ page 06

Detail drawing fittings_ page 07

Gap dimensions_ page 08

Install instruction_ page 09

Install instruction Push to open_ page 10

TOOLS:

1_ Allen wrench 4 mm

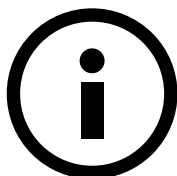
2_ Allen wrench 5 mm

3_ Drill

4_ Pencil

VERSION INFORMATION:

Version 1.0: Added dividing rail
Redesign manual and product information added



PRODUCT INFORMATION




GENERAL INFORMATION:





Preparation

- This manual is part of the product and describes the safe and proper installation of the system. Read the instruction carefully and closely before installation
- Please note that the assembly must only be performed by qualified and trained staff in strict compliance with all details indicated in this document.
Improper installation in variation from manufacturer's specification may cause defects and danger, thus endangering the safe fixing of the product as well as the safety of the prospective user. The liability of the manufacturer shall be excluded in case of defects and consequential damages resulting from incorrect assembly of this product.
- Please check the completeness of the delivered parts and check carefully if any transport damages are visible..
- If any parts are damaged or lost, please immediately contact the responsible supplier.
- It is assumed that you have exactly identified all cutting dimensions according to the measurement instruction for **raumplus**-products

SYMBOLS:

Used symbols / safety instructions

Symbol	Importance
	Risk or danger!
	Advice and information
	Additional information / other documents

	Directional data / direction of movement
	„yes“ and „right“
	„no“ and „wrong“
	Follow the order

SYSTEM:

System Information: Drehtür S800

- min. / max. door height = **700mm / 2600mm**
- min. / max. door width = **500mm / 600mm**

PRODUCT INFORMATION

GENERAL INFORMATION: **Product safety**

- The door system is in accordance with the state of the art and recognized safety rules at the time of delivery

USE:

Intended use

- The prerequisite for the intended use of our products is the professional installation according to our installation instruction. The fittings must be sufficiently and durable attached to all relevant places. Sufficient fittings must be available and durable installed in all relevant places. The function of the fitting must not be hindered or altered during installation.
- Special solutions are only possible in consultation with **raumplus**

GENERAL INFORMATION: **Use not as intended**

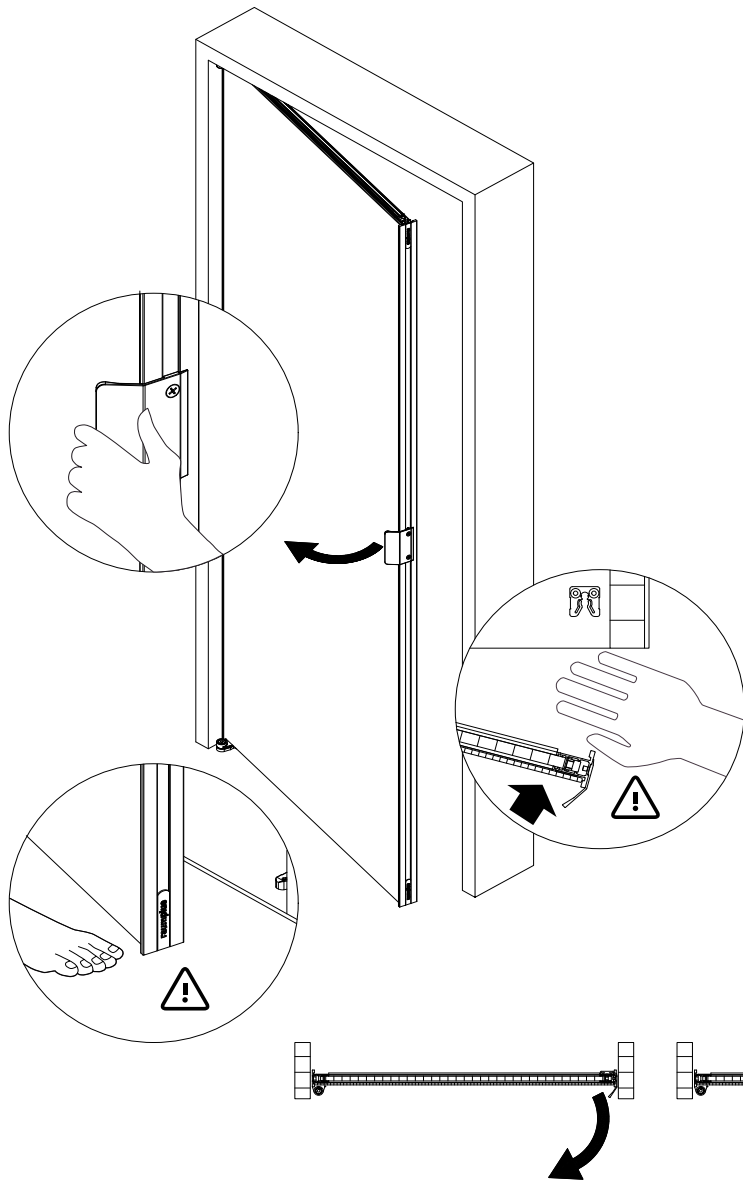
- Risk or danger may occur in the following cases:
 - the door system has improperly been installed or maintained.
 - the safety and installation instructions have not been followed.
 - after improper installation or inadequate fixing (e.g. to parts of buildings)
 - the maximum weight of the doors has been exceeded.
 - improper shock and case loads or other additional loads on the fittings have occurred
 - the fittings have been used outside.
 - Body parts or objects get in to the closing edges or door runnings during use of the door wing.
 - the door system is not used as intended.

Structural modifications

- structural modifications that can not be offered as an accessory made by raumplus may only be attached or installed with permission of raumplus.

MANUAL

THIS MANUAL IS PART OF THE DELIVERED PRODUCT AND DESCRIBES THE SAFE AND PROPER USE.



Designated use:

The product is designed and manufactured for indoor use.

The product was designed as a hand-held hinge door that is not faster moved usually than at walking pace and the reach of the end positions are manually braked. The doors are guided up and down.

Any other use or use beyond that is considered to be improper.

Manual:

Open the door by the handle profile or the handle (optional). Except push to open.

Run the door slowly to the opening / closing point, or

Note:

During the movement of the door, protect your hands before clamping danger.

When closing or opening the door never embrace the profile, only use the handle.

Use the door as instructed.

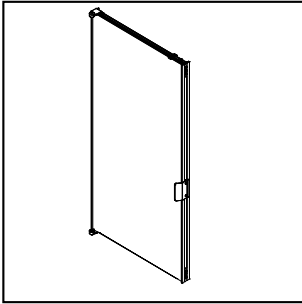
Safety Information:

The product complies with the prior art and the recognized safety rules at the time of delivery.

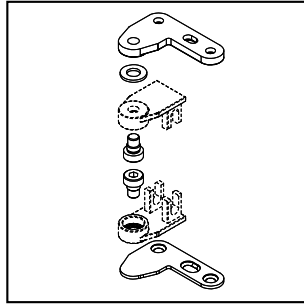
- Pay attention to child safety.
- Do not touch at closing edges, risk of entrapment.
- No object inside the closing edge
- No additional load on the doors.
- Changes in the gaps of the door may lead to fall out of the frame.
- Opened doors do not expose to the wind.
- Do not overstretch the door.
- Beware of broken glass.
- Structural changes, additions or modifications can only be carried out by a dealer.
- In case of malfunctions or irregularities: system shut down and call your dealer.

According to the definition of the liability of manufacturers for the products they produce, as given in the "Law of Liability for Products" (§4 Prod-HaftG), the stated above information about the product applies. Deviation from this information, as is written, releases the manufacturer of its liability.

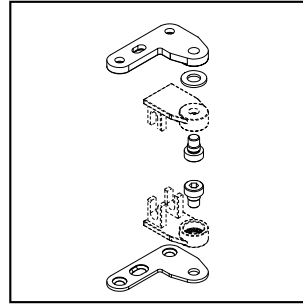
ACCESSORIES



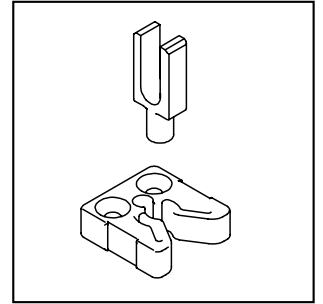
1_



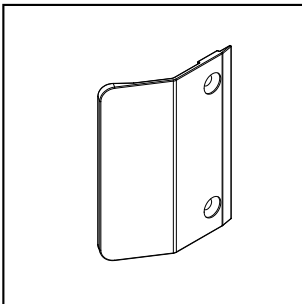
2_ 10.01.801



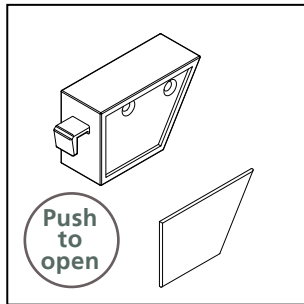
3_ 10.01.802



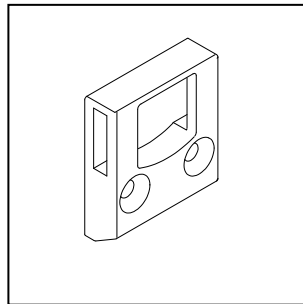
4_ 10.01.805



5_ 10.01.807



6_ 10.01.860



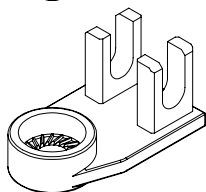
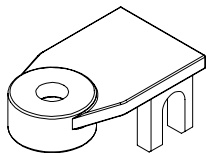
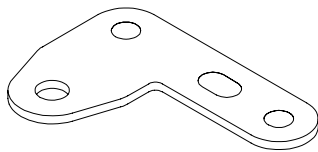
7_ 10.01.861

- 1_ Hinge door S800
- 2_ Hinge door set S800 DIN left
- 3_ Hinge door set S800 DIN right
- 4_ Door stopper hinge door
- 5_ Handle S34, angled
- 6_ Push-snapper grey incl. caps and screws
- 7_ Locking piece, grey for push-snapper
- 8_ Distance piece, grey, right f. für push-snapper
per plant: 2 pieces (10.01.863) without fig.
- 9_ Distance piece, grey, left f. push-snapper
per plant: 2 pieces (10.01.862) without fig.

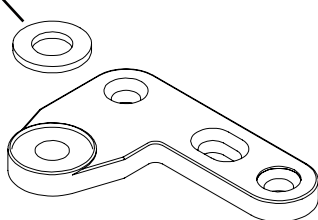
DETAILED DRAWINGS

HINGE DOOR SET S800 DIN LEFT AND RIGHT

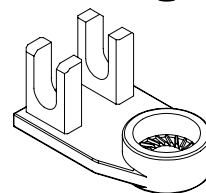
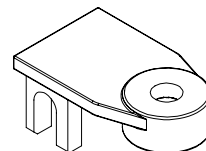
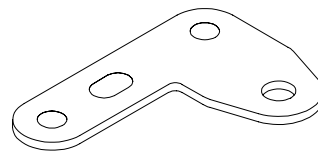
DIN left



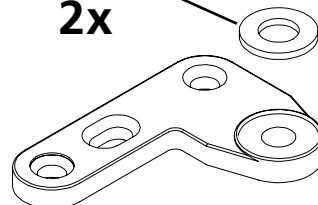
max.:
2x



DIN right



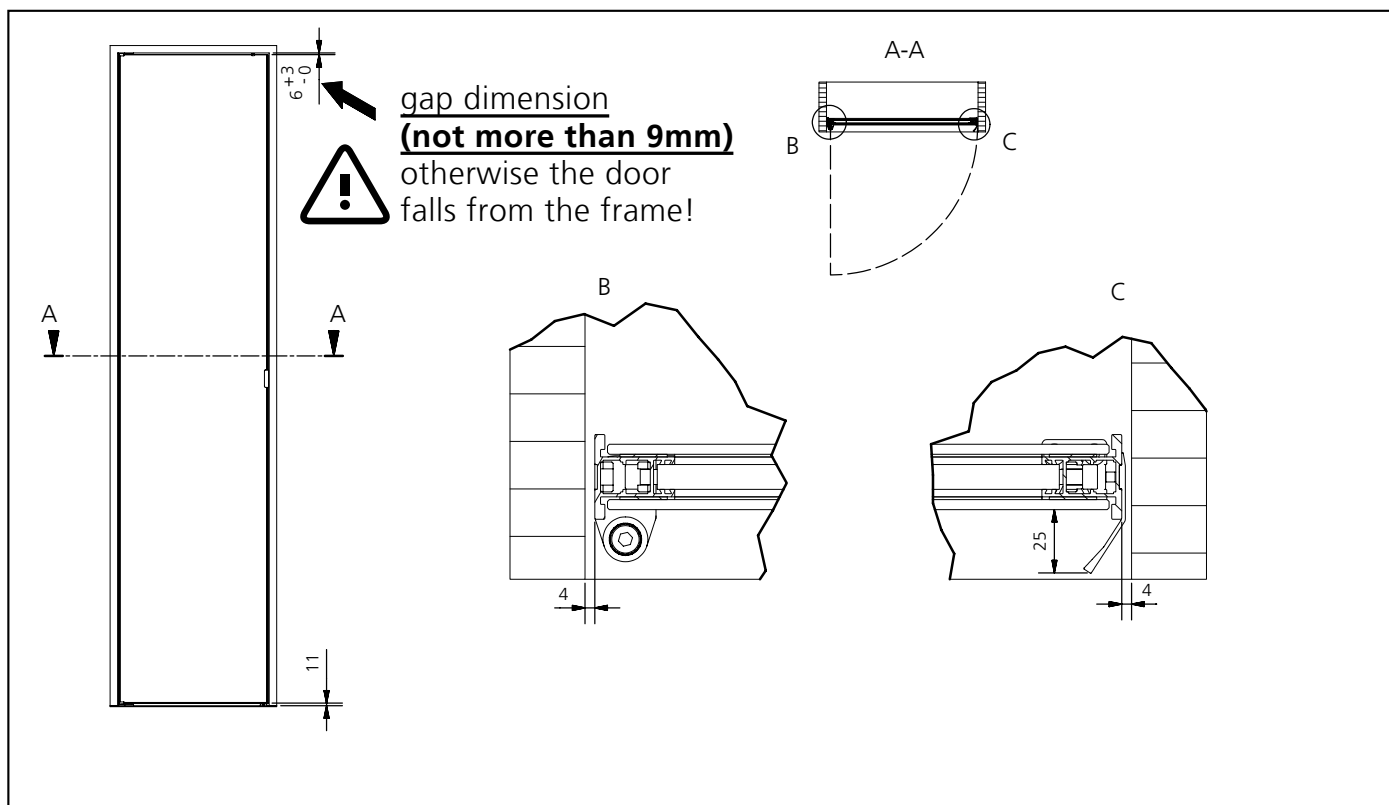
max.:
2x



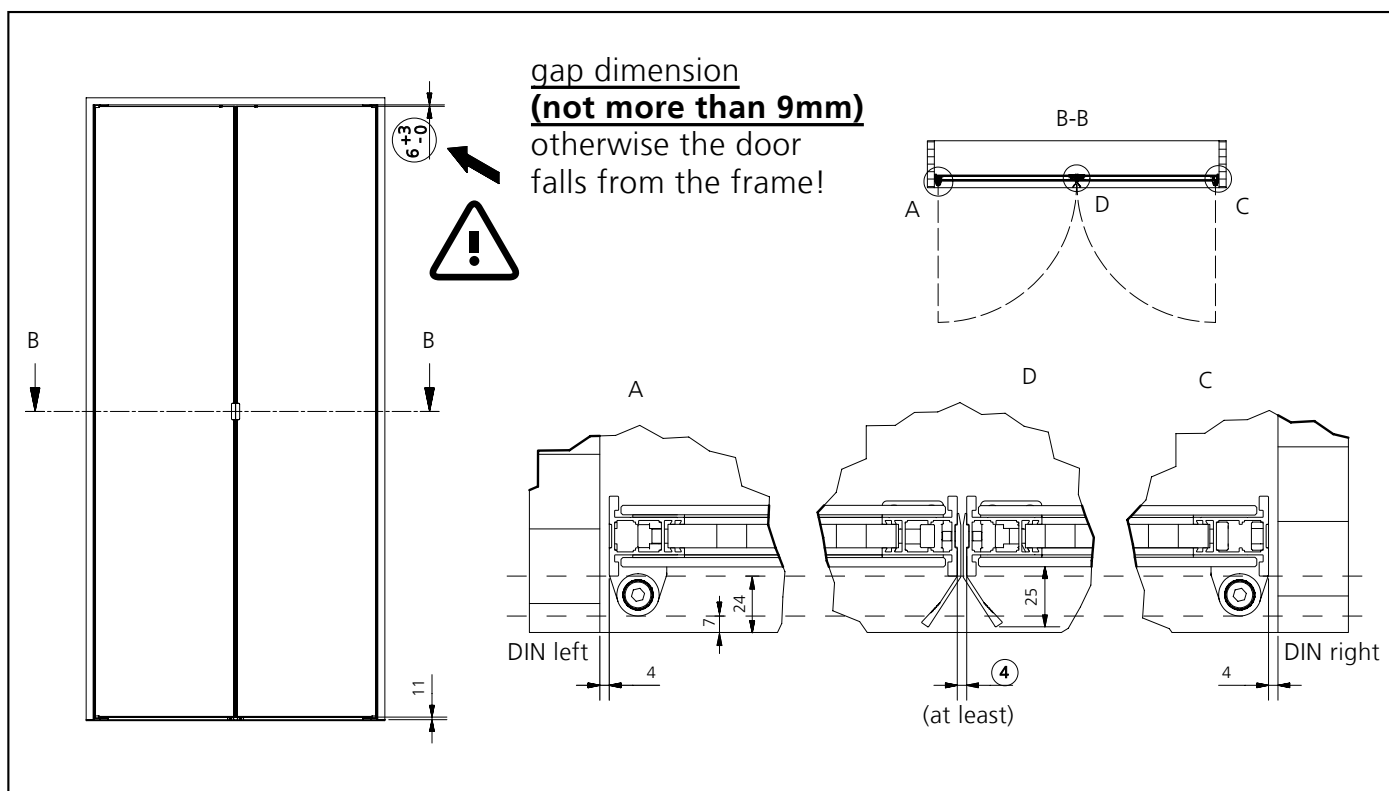
without fastening material

DETAIL DRAWINGS

SINGLE / DOUBLE WING HINGE DOOR



1_ Illustrated door stop DIN left, single wing hinge door

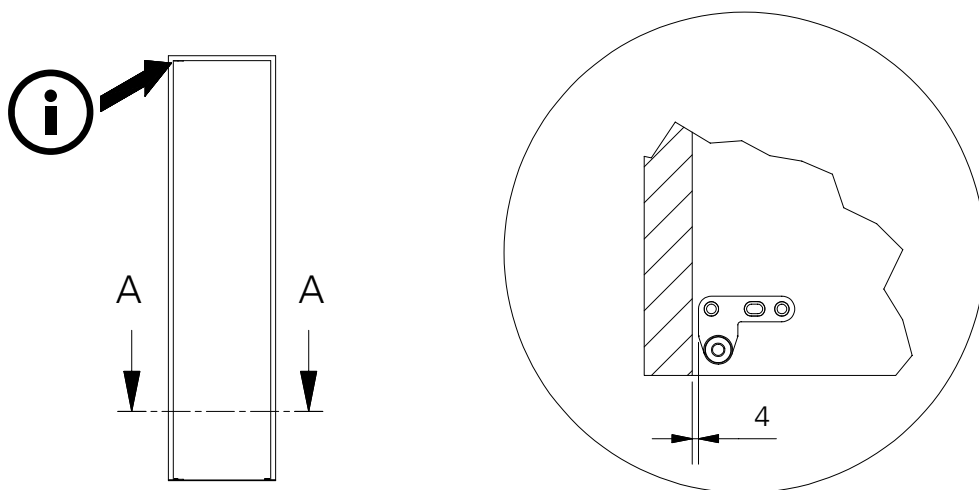


2_ Double wing hinge door

INSTALLATION INSTRUCTION

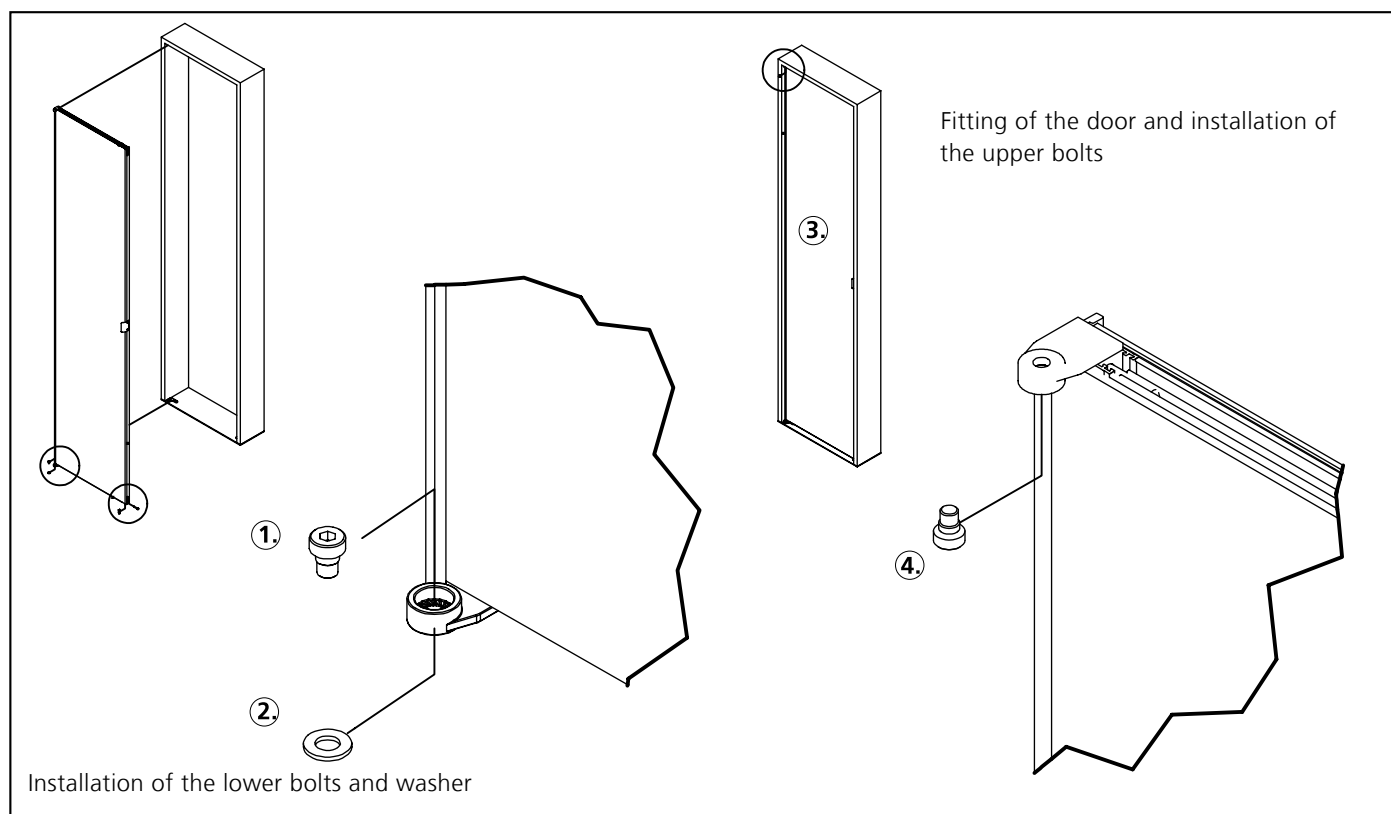
INSERTION OF THE DOOR

Important: For safety reasons the upper bolt is longer than required.
A hole at least
Ø 7mm x 5mm must be drilled!



Fit the mounting plates to top and bottom (temporarily, only in the long slot).
Following adjustment and function test tighten fittings.

1_ Montageplatten

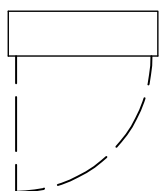


2_ Einsetzen der Tür

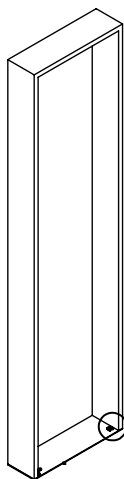
INSTALLATION INSTRUCTION

DOOR STOPPER HINGE DOOR / PUSH-SNAPPER

Functional test and installation of the pin

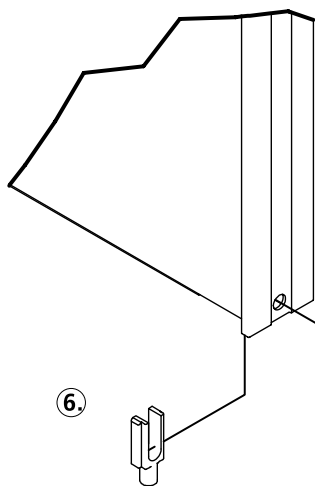


5.



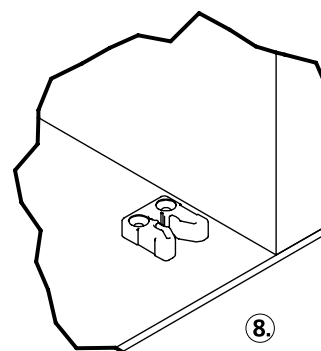
Mounting of the stopper plate - Functional test -
Final fitting of the mounting plates

Check all bolts for tightness!



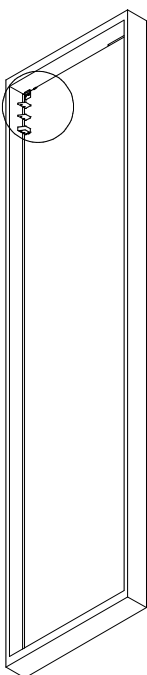
6.

7.

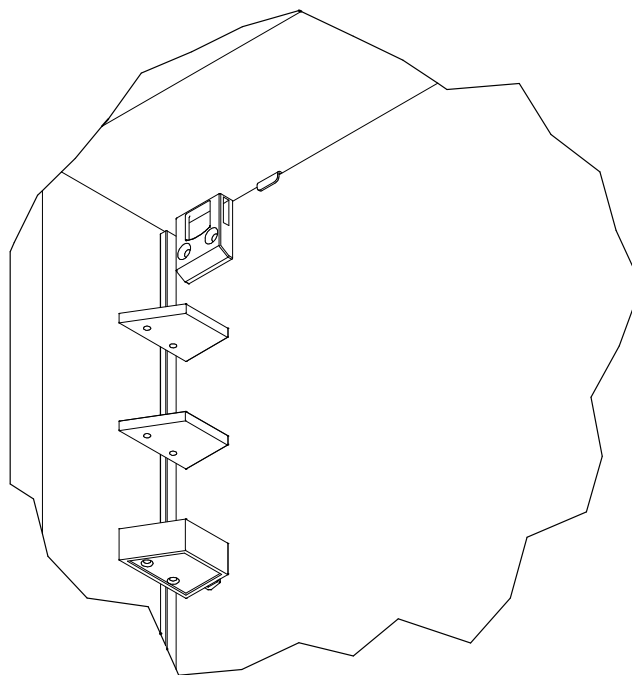


8.

3_ Mounting the door stopper hinge door



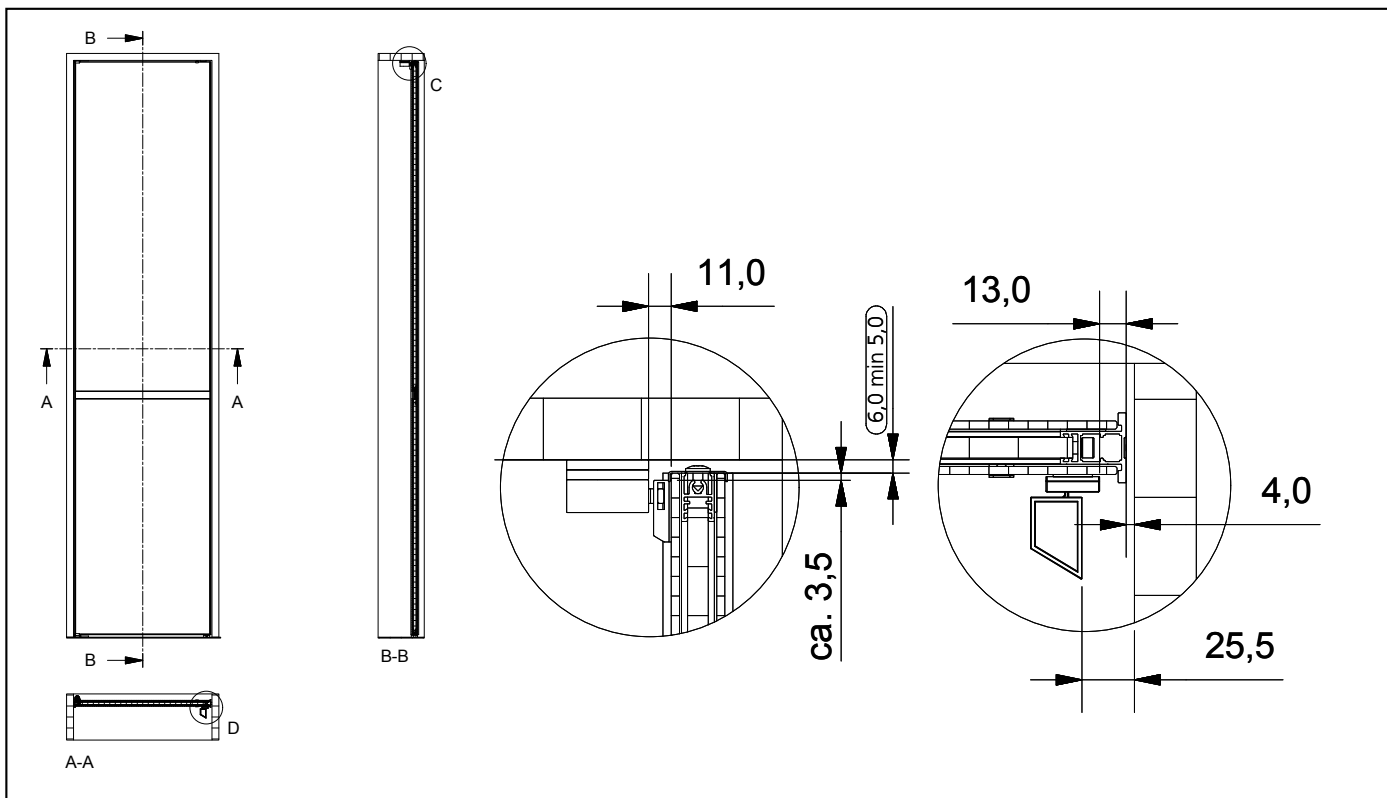
1_ Position of the push-snapper



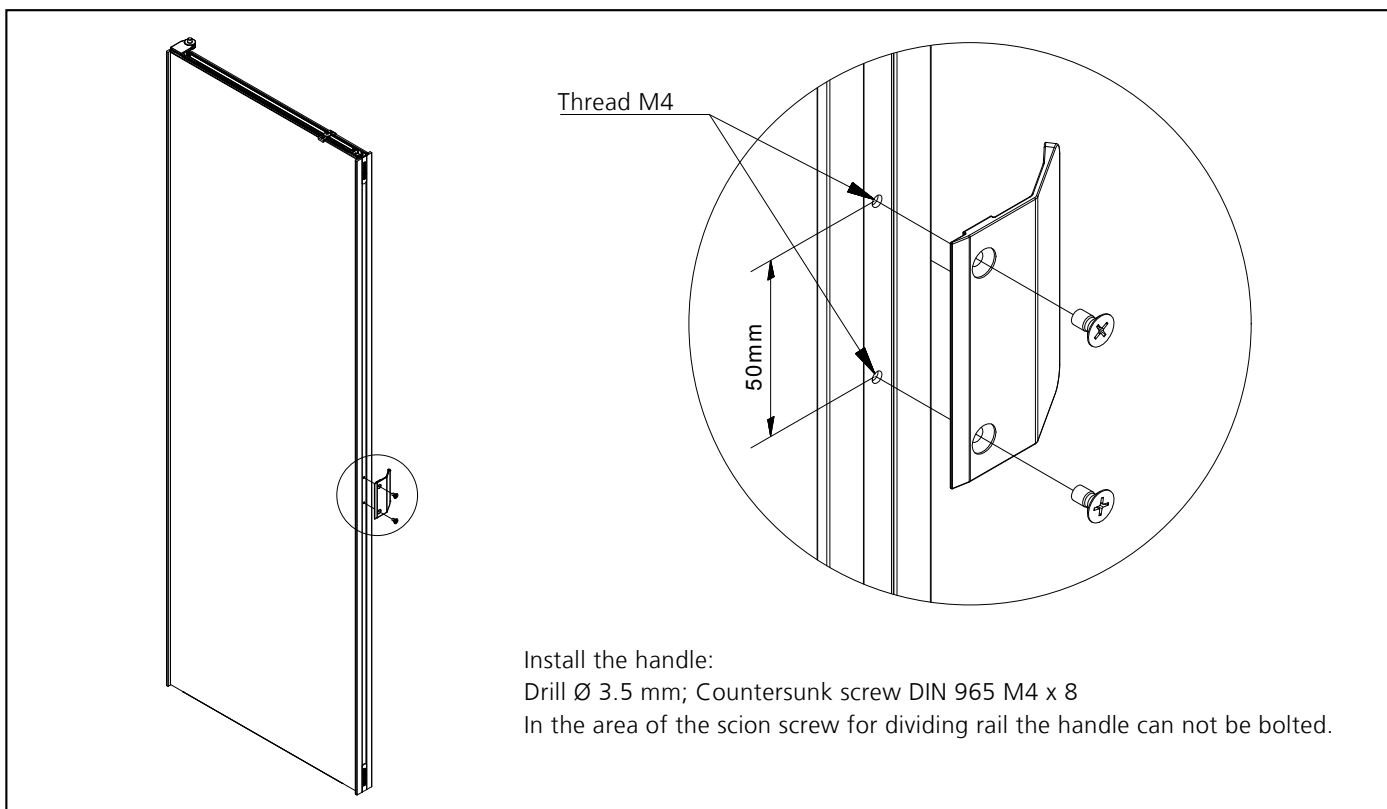
2_ If necessary, shim the push-snapper catch with spacers

INSTALLATION INSTRUCTION

PUSH-SNAPPER



3_ Position of the push-snapper



4_ Mounting of the handle

